

Gas Registry Statistics - September 2011

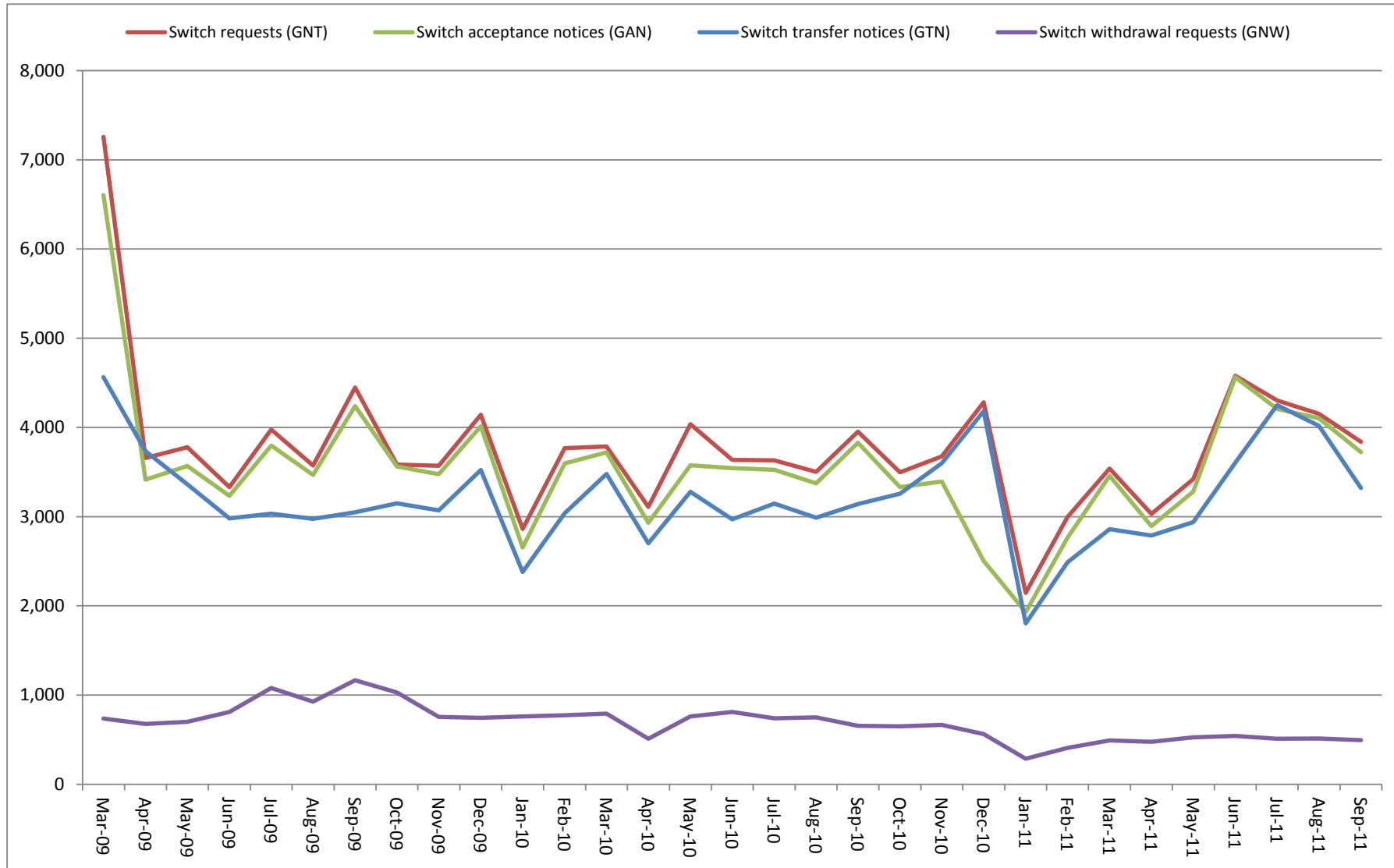
The following report provides statistics and charts illustrating gas registry usage, switching volumes and breakdowns of retailer, distributor and meter owner market shares. The information is provided in accordance with version 1.2 of the Determinations by the Industry Body (Gas Industry Co) under the Gas (Switching Arrangements) Rules 2008, dated 20 February 2009.

Summary registry statistics – September 2011

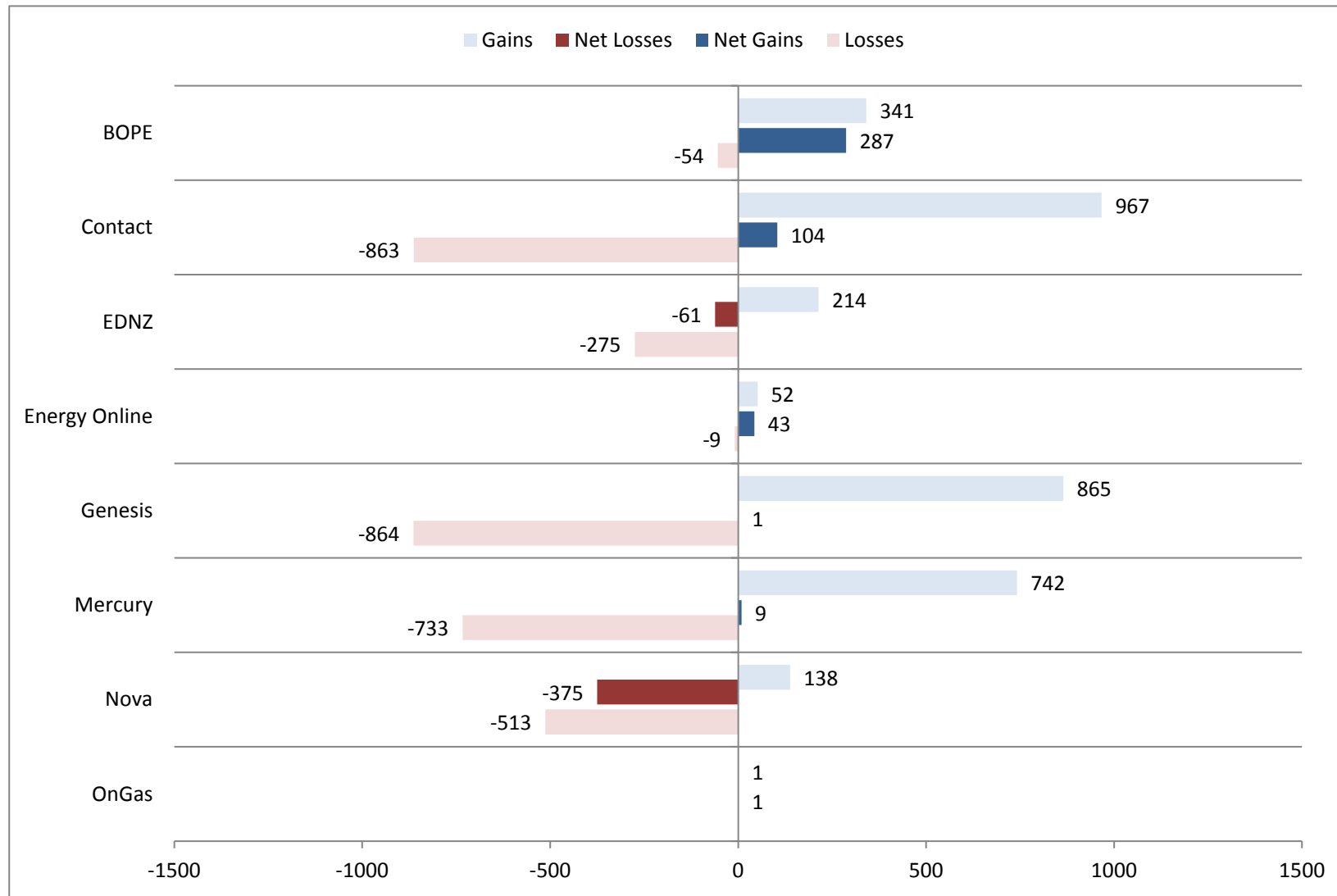
ICP enquiries processed in month (Online)	24,538
ICP enquiries processed in month (Offline)	13,664,482
Total ICP enquiries processed in month	13,689,020
ICPs added to the registry in month	424
ICPs changed in month	94,069
ICPs decommissioned in month	17
Valid standard switch requests (GNT-S) received in month	2,285
Valid move switch requests (GNT-SM) received in month	1,555
Valid switch requests (GNT) received in month	3,840
Valid switch acceptance notices (GAN) received in month	3,723
Valid switch transfer notices (GTN) received in month	3,320
Valid switch withdrawal requests (GNW) received in month	495
Valid switch withdrawal acceptances (GAW-A) received in month	467
Valid switch withdrawal rejections (GAW-R) received in month	16
Valid switch reading renegotiation requests (GNC) received in month	46
Valid switch reading renegotiation acceptances (GAC-A) received in month	42
Valid switch reading renegotiation rejections (GAC-R) received in month	3

Note: A switch transfer notice (GTN) is the last stage required to complete the switching process. This statistic indicates the number of switches completed in the month.

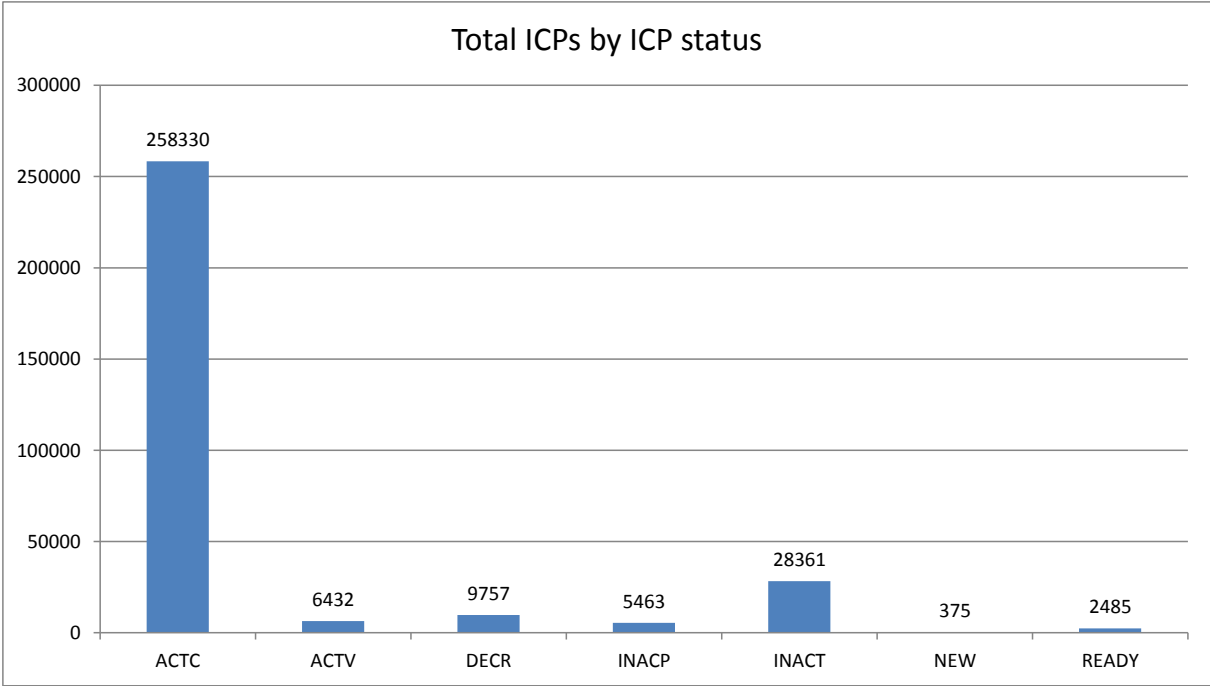
Switching activity – historical



Switching gains and losses – September 2011



ICPs by status – September 2011



Installation control points (ICPs) are the record of customer installations in the gas registry. The meaning of the ICP status codes are as follows:

ACTC—Active contracted (gas is able to flow and the customer has a contract with a retailer)

ACTV—Active vacant (gas is able to flow and the premises is vacant)

DECR—Decommissioned

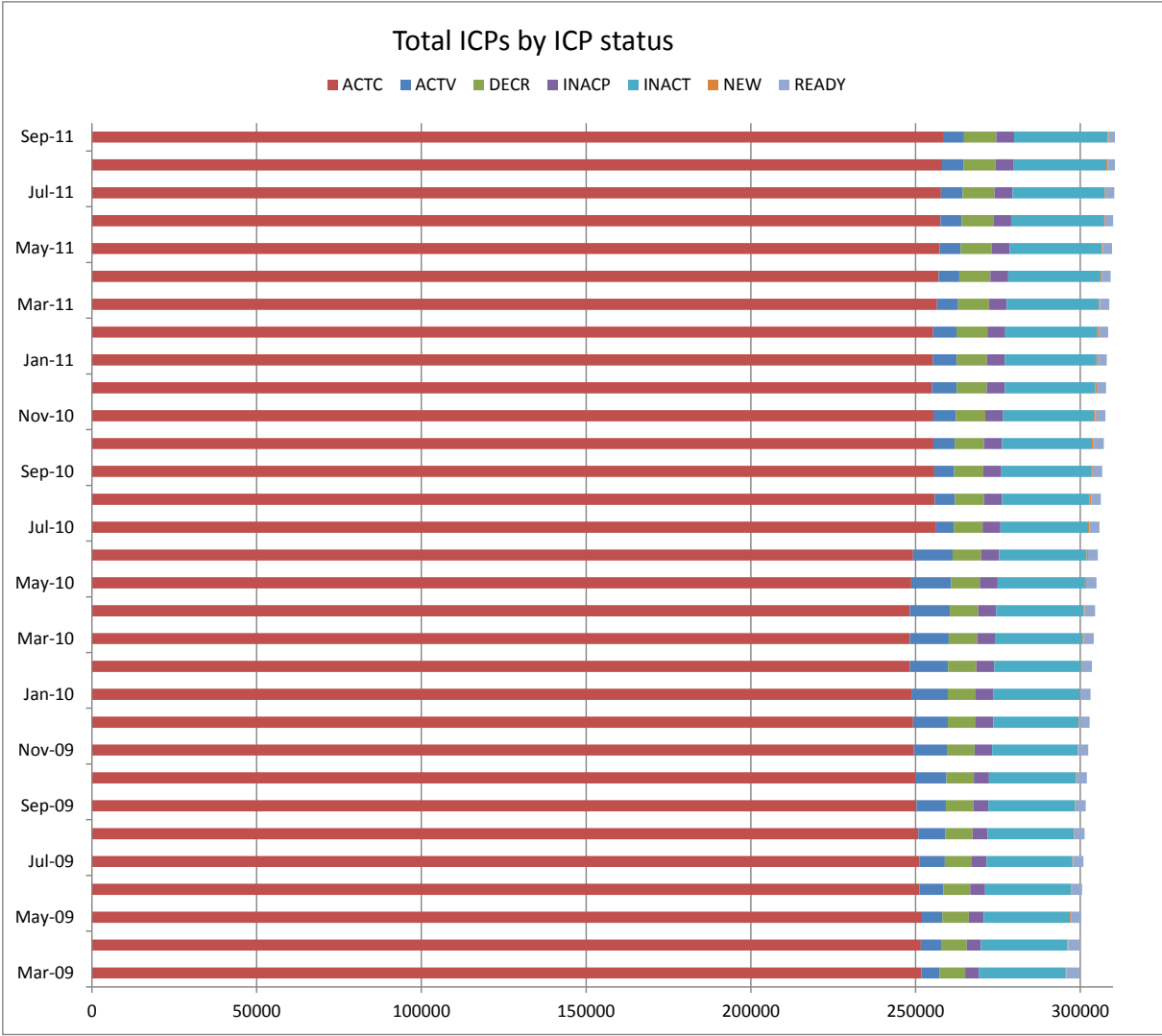
INACP—Inactive permanent (gas unable to flow due to a permanent disconnection)

INACT—Gas unable to flow due to a temporary disconnection

NEW—Newly created ICP, gas not yet able to flow

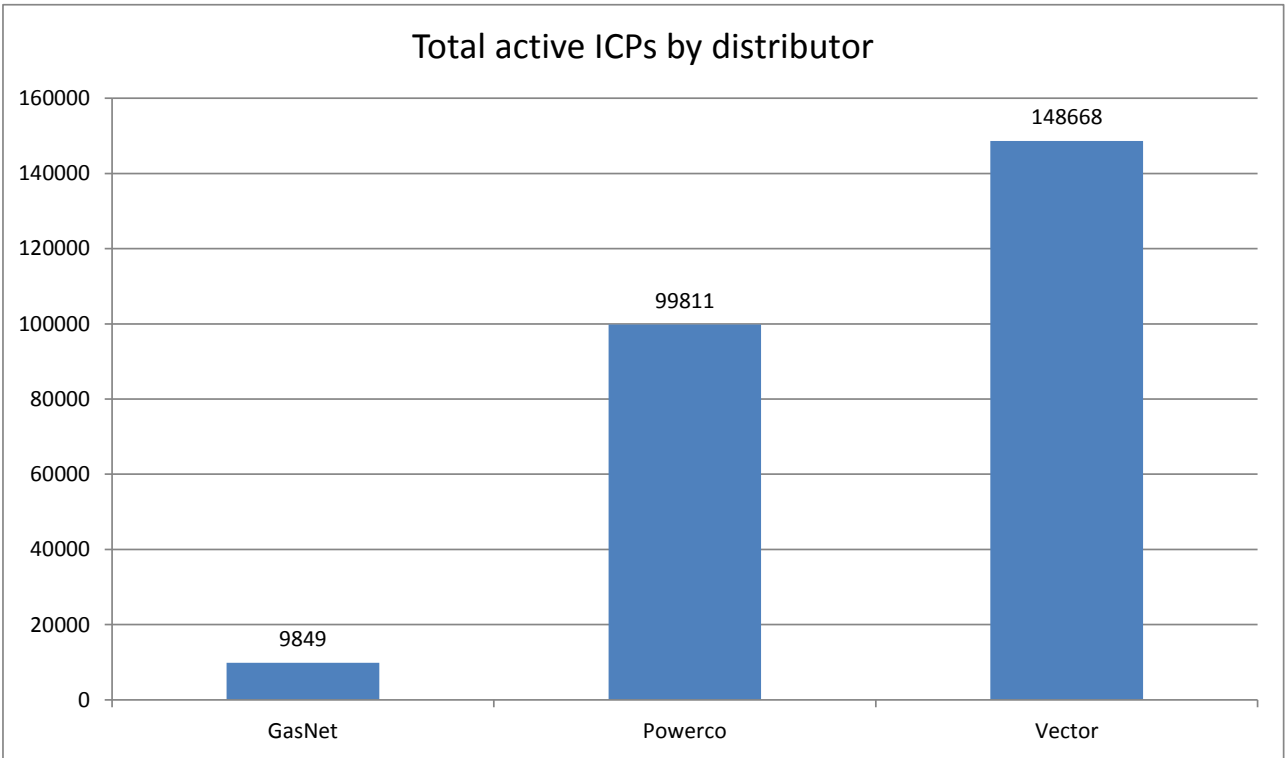
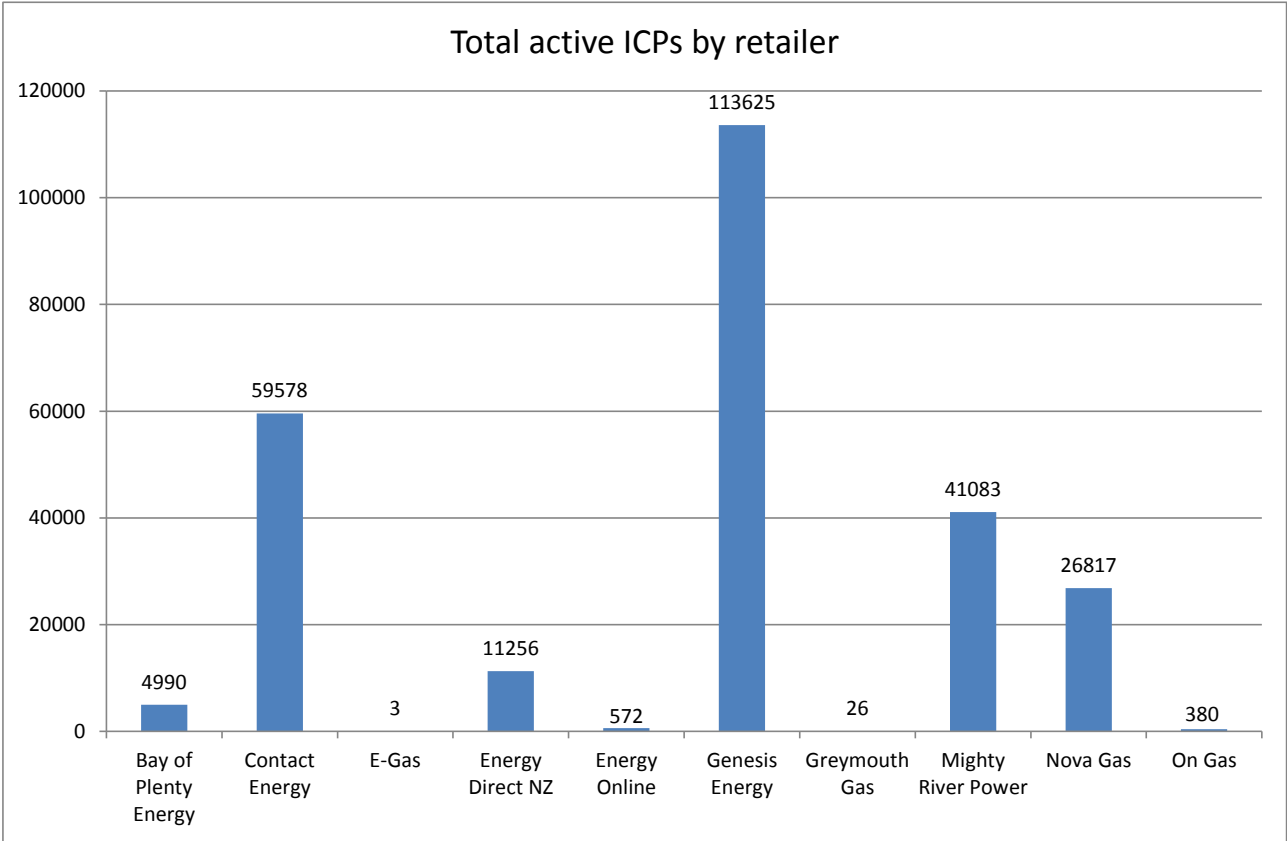
READY—New ICP, gas able to flow, awaiting uplift by retailer

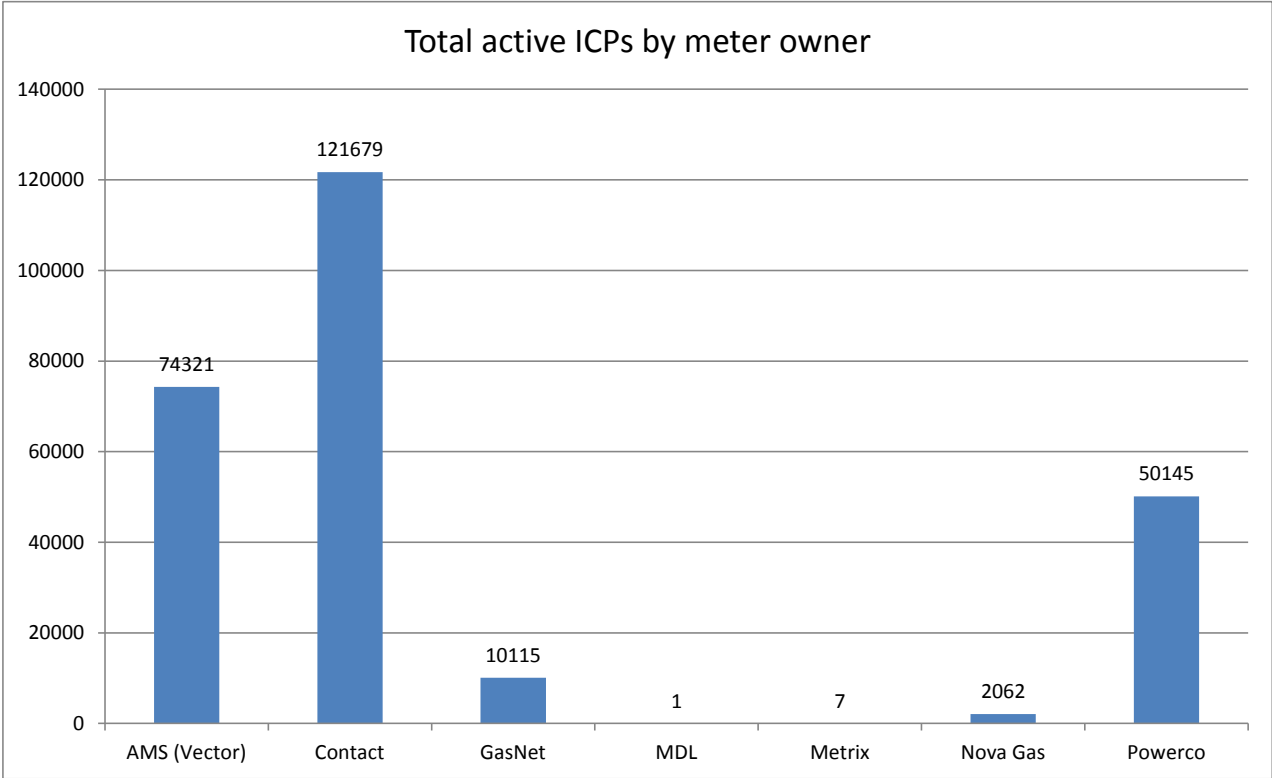
ICPs by status – historical



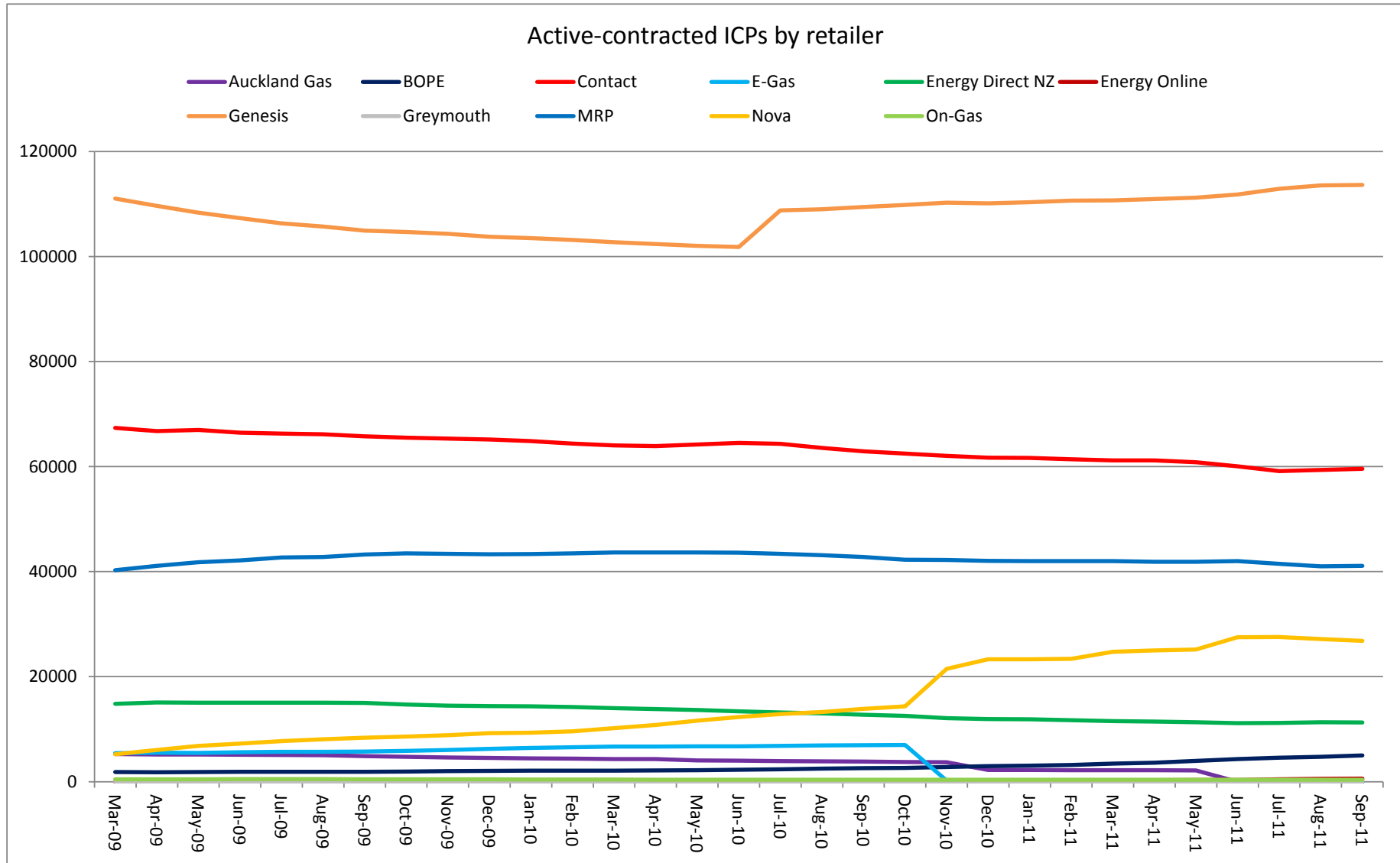
Market shares – September 2011

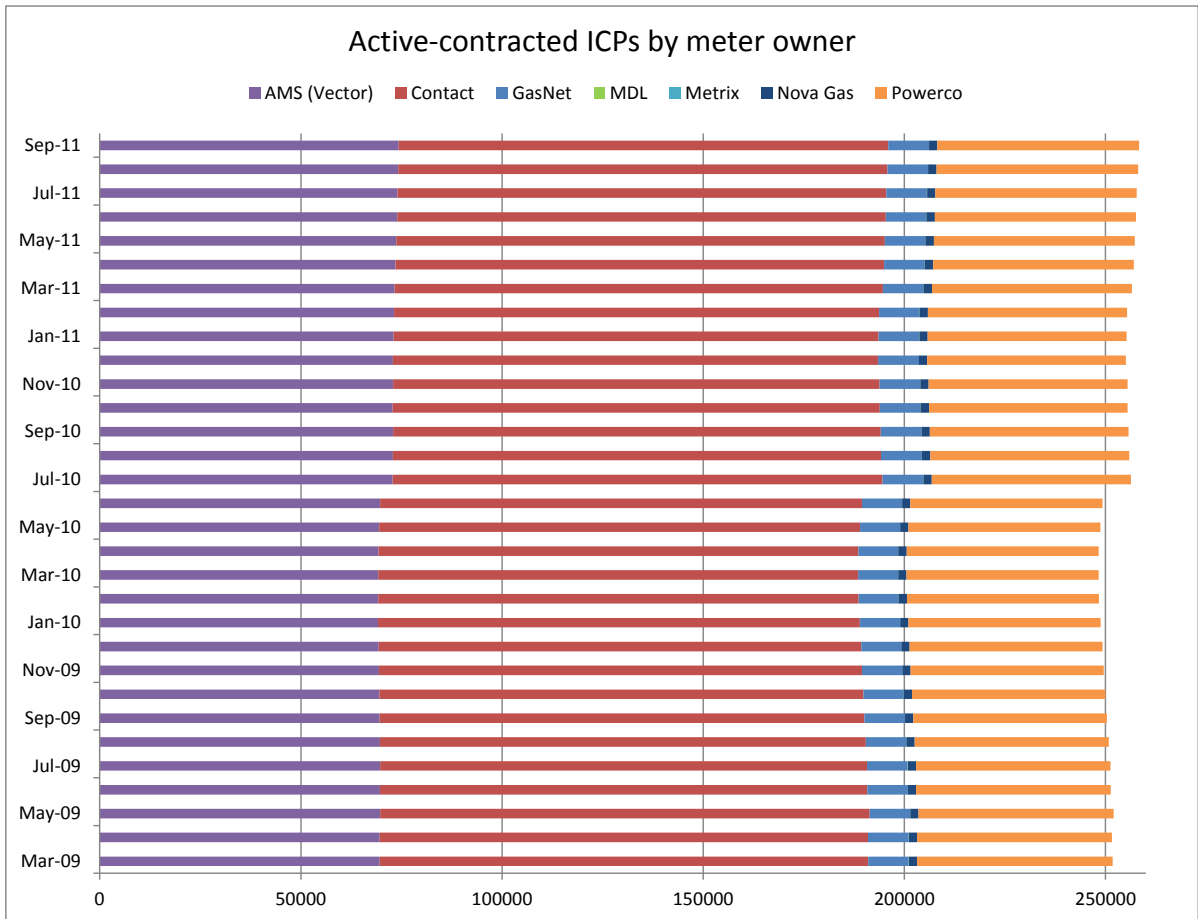
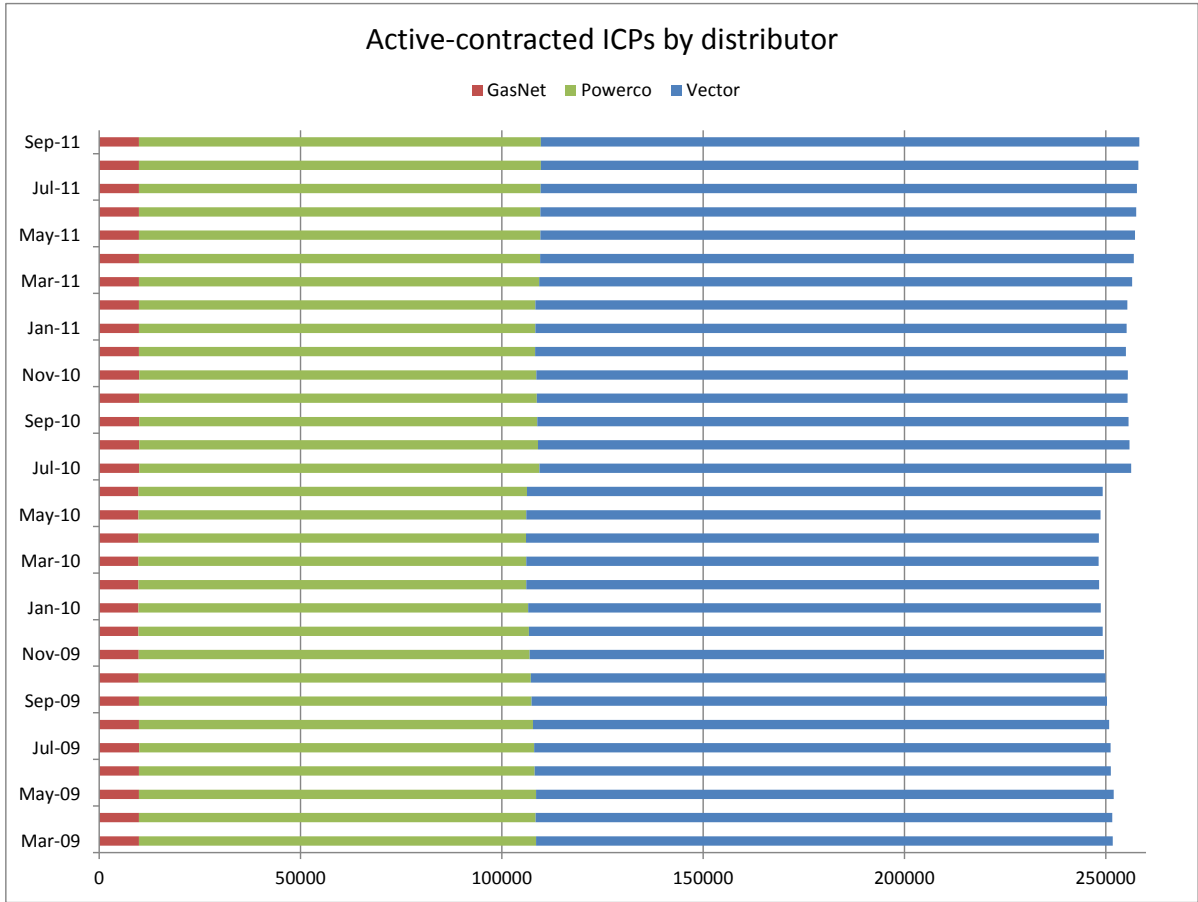
The following charts show the distribution of active-contracted ICPs by retailer, distribution company and meter owner respectively.





Market shares – historical





Active-contracted ICPs by gas gate and retailer – September 2011

The following table shows the distribution of active-contracted ICPs by gas gate, and the distribution by retailer at each gas gate.

The responsible retailer codes are as follows:

BOPE—Bay of Plenty Energy

CTCT—Contact Energy

EDNZ—Energy Direct NZ (Wanganui Gas)

EGLT—E-Gas Ltd

GEND—Genesis Energy

GENG—Genesis Energy

GEOL—Energy Online

GMTH—Greymouth Gas

GNGC—OnGas (Vector)

GNVG—Nova Gas

MEEN—Mighty River Power

The gas gate names associated with the codes used in the table can be found here:

http://gasindustry.co.nz/sites/default/files/u14/All_Gas_Gates_301009.pdf

Gas Gate	BOPE	CTCT	EDNZ	EGLT	GEND	GENG	GEOL	GMTH	GNGC	GNVG	MEEN	Total
ALF15501									1			1
ASH34301		52	30			62				57	12	213
BAL08201								1				1
BAL09626								1				1
BEL24510		1647	226		2	17325	21		9	1792	1557	22579
BMC17901		491	4		1	413	4		4	211	640	1768
BRO36301									1			1
CAM17201		92				1529				44	170	1835
DAN05001		75				9			1	22		107
DRU15101		13				4			1	8	3	29
DRU15102		14				12			4	7	19	56
EGC30701		1										1
EGC30702	2	1				2				1		6
ELM12301	36	39	31			219			3	4		332
FLD03001		389	200		2	446			1	610	75	1723
FLH21901		1	4									5
FOX22101		160	8		1	22	9		1	89	8	298
GIS07810		881	232		3	2006			3	156		3281
GLB03401									1			1
HAR11801						1			4			5
HEN74101		7131	9	1	4	6234	86	1	16	1253	6490	21225
HPS02993					1							1
HRU16101					1	1				2		4

Gas Gate	BOPE	CTCT	EDNZ	EGLT	GEND	GENG	GEOL	GMTH	GNGC	GNVG	MEEN	Total
HST05210		2505	273	1	2	442	171		6	982		4382
HTK08301		22				218				2	11	253
HTL16601		3			1	90			3	5	3	105
HTV11301	16	1805	3		3	22514			51	491	2049	26932
HUN15301			1						2	1		4
HWA20801	131	424	317			1836			4	59		2771
IGW11901	128	52	71			306				9	3	569
KAP12901		2				2						4
KAW04405	131	8	1			107				5		252
KAW04410									1			1
KAW04411									1			1
KIG16801		4								1	1	6
KIH19101		54			1	1235			1	36	37	1364
KIN02601		1				3			2		1	7
KIN04310									1			1
KIW34201								1				1
KIW34202						1			1			2
KKI23701		2								1		3
KPA12401	3	5	5			47						60
KRG24101		1	1							2		4
KTK23901									1			1
KUK22401		6				19				4		29
KUR33601									1			1

Gas Gate	BOPE	CTCT	EDNZ	EGLT	GEND	GENG	GEOL	GMTH	GNGC	GNVG	MEEN	Total
LAB20201		9	62			40				6	1	118
LCF20010		1										1
LNB24301		62	28		1	105			4	80	17	297
LVN24401		1633	99			341	109		5	607	71	2865
MGK05401								1				1
MMU08001	425	149	1		4	3147		1	3	147	310	4187
MNA23402	12	31	35			154				4		236
MNG34001									1			1
MRV16301		1				2						3
MRV16302	1	45				556				23	68	693
MSD01801					1							1
MSD01802									1			1
MTG17301		2				32					2	36
MTN23801		61	229			150	1		2	13	1	457
MTP20601		1				5						6
MUT19001									1			1
NGW14501		12				134				2	4	152
NPL12101	2374	825	1438		2	6005	2		6	203	12	10867
NPS00530		1										1
OAK18601						1						1
OKA13201	4	6	7			41				1		59
OKS32801										1	1	2
OKU16701	40	22	41			125				2		230

Gas Gate	BOPE	CTCT	EDNZ	EGLT	GEND	GENG	GEOL	GMTH	GNGC	GNVG	MEEN	Total
OPK13001	12	21	15			128						176
OPO32001	50	4			1	53				3		111
ORD24701		1	1							1		3
OTA22601		58	4			292				25	6	385
OTB00301		1										1
OTO14101		4				160				15		179
PAH23101						19						19
PAH23201						1				1		2
PAP06603		38			1	27				6	54	126
PAP06610		4235	7		3	858	11	1	56	676	3265	9112
PAU20101		541	51			2398			2	193	73	3258
PGH15901		1										1
PGU13101						14						14
PHT04901		39				37			1	11		88
PIR31101		2				44					3	49
PLN24201		3210	1173		1	3969	19		21	6052	599	15044
PPA33201		1				11				1		13
PTA20901	16	17	21			128			2	3		187
PTR32601	5	13	1			296			1	15	12	343
PUK04201		66			1	23	2			40	52	184
RAG33401										1		1
RAM15201		1							2			3
ROT08101	260	303	1			2708			12	211	423	3918

Gas Gate	BOPE	CTCT	EDNZ	EGLT	GEND	GENG	GEOL	GMTH	GNGC	GNVG	MEEN	Total
RPR30801		2				20				1	1	24
STR10201	133	64	61		1	620				20		899
TAC31001									1			1
TAT16401								1				1
TAU07001	101	282	3			1344			1	156	166	2053
TAW31004		1				3				1		5
TCC00201		1										1
THO22701		2				11				2		15
TIR33501		1										1
TIR33502	2	3				53				11	3	72
TKN17001		1				142			1	9		153
TKP05101										1		1
TKR19701	4	59	2			870			1	51	36	1023
TKS17401		1				17		1	2	1		22
TPK33301	29	7	1		1	525				23	25	611
TRC02003		1										1
TRG07701	604	148	3			3123			6	221	256	4361
TTK30601	1	1				3						5
TUK06501		5				1	1		2	2	1	12
TWA35610		8047	370	1	8	10404	32		29	7131	2539	28561
WAG21501		492	5870			2724	4	2	2	149	25	9268
WAK22801		200	22			1188				64	9	1483
WEL18301		2				19				3	2	26

Gas Gate	BOPE	CTCT	EDNZ	EGLT	GEND	GENG	GEOL	GMTH	GNGC	GNVG	MEEN	Total
WHG07501		107	3			914			6	99	88	1217
WHK32101	235	14				151			3	34	12	449
WKE19201									1			1
WRK18901		37				148			2	16	55	258
WST03610		21672	20		8	7458	88	14	72	4110	20515	53957
WTA16501			1			38		1		3	1	44
WTG06910		535	78		1	4565	9		3	396	498	6085
WTK33901		369				1323				44	642	2378
WTK33902		148				207	2			45	155	557
WTR12001	235	76	192			584	1		2	27	1	1118
WTT20301									1			1
WVY23601		2			1	4						7
Total	4990	59578	11256	3	57	113568	572	26	380	26817	41083	258330