

# Gas Registry Statistics – May 2011

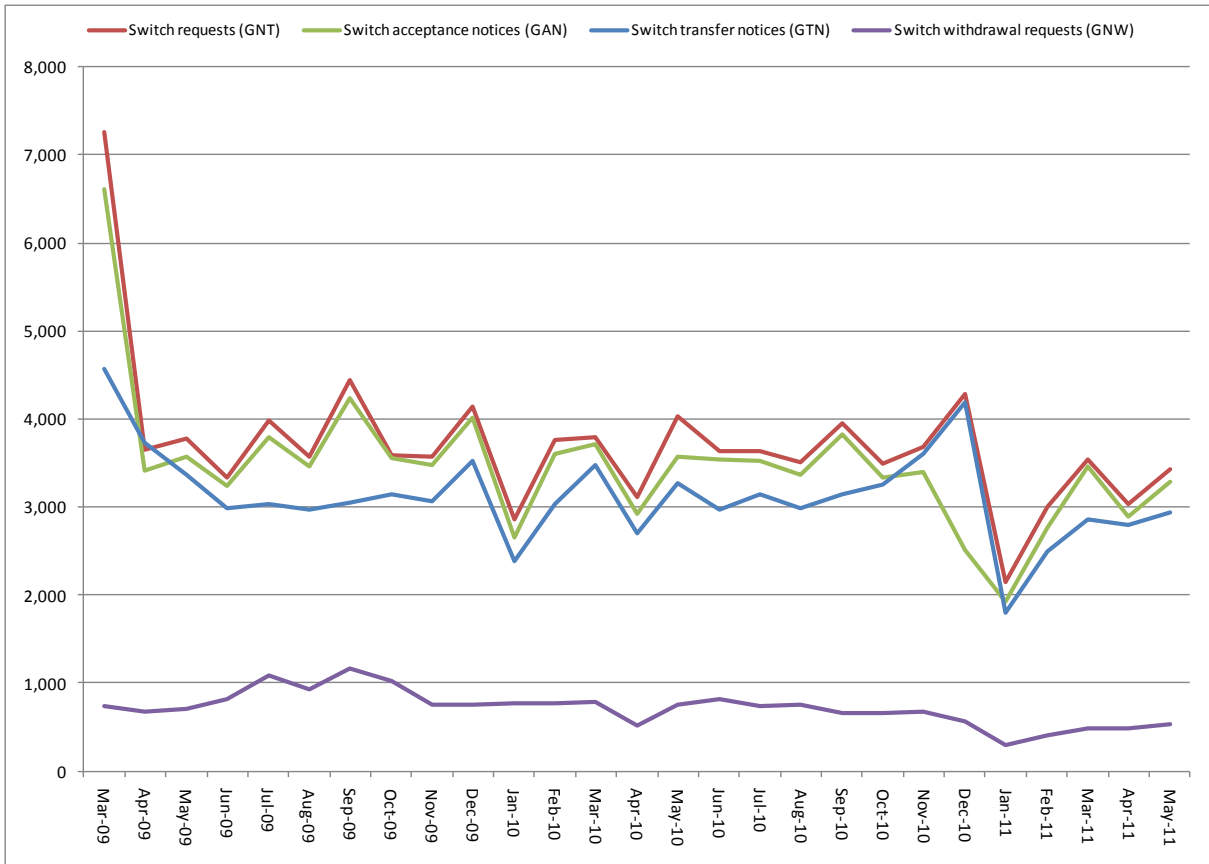
The following report provides statistics and charts illustrating gas registry usage, switching volumes and breakdowns of retailer, distributor and meter owner market shares. The information is provided in accordance with version 1.2 of the Determinations by the Industry Body (Gas Industry Co) under the Gas (Switching Arrangements) Rules 2008, dated 20 February 2009.

## Summary registry statistics – May 2011

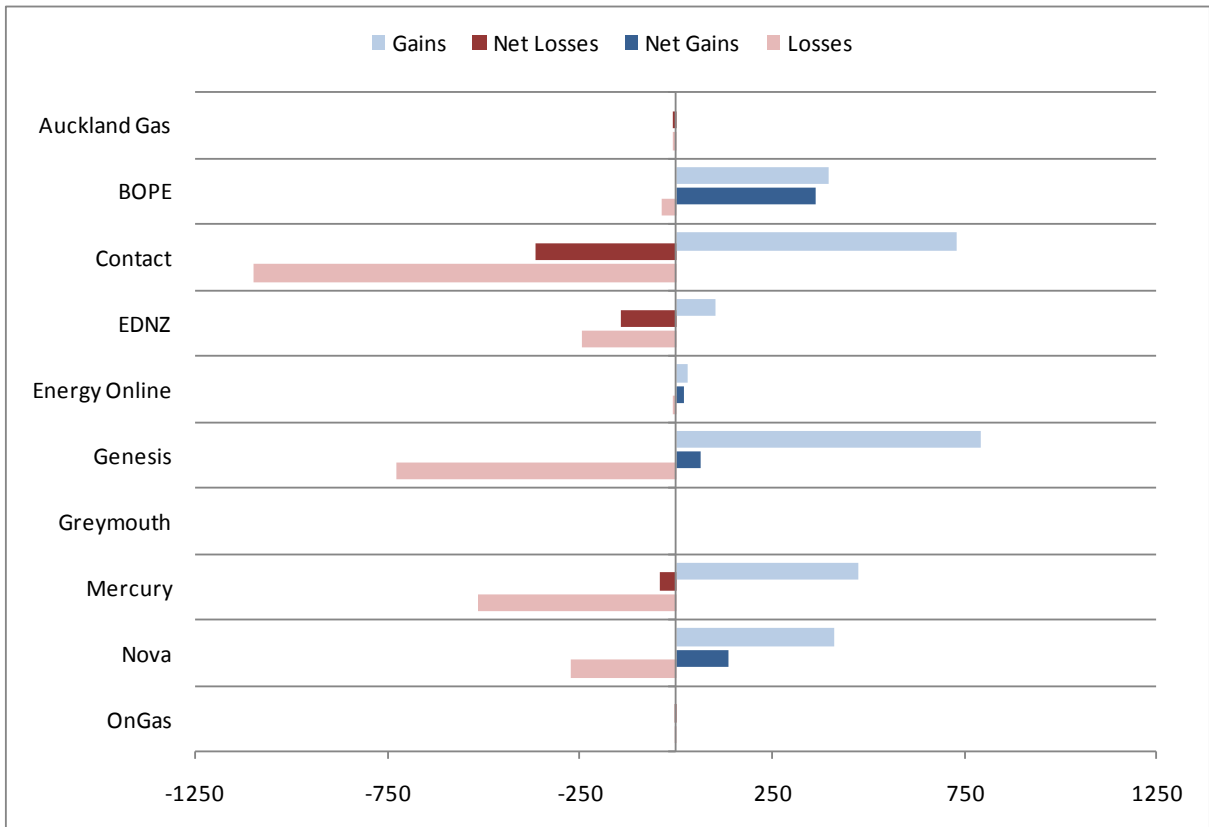
ICP enquiries processed in month (Online)	31,574
ICP enquiries processed in month (Offline)	12,437,505
<b>Total ICP enquiries processed in month</b>	<b>12,469,079</b>
ICPs added to the registry in month	425
ICPs changed in month	5,987
ICPs decommissioned in month	10
Valid standard switch requests (GNT-S) received in month	1,779
Valid move switch requests (GNT-SM) received in month	1,642
<b>Valid switch requests (GNT) received in month</b>	<b>3,421</b>
Valid switch acceptance notices (GAN) received in month	3,281
<b>Valid switch transfer notices (GTN) received in month</b>	<b>2,938</b>
Valid switch withdrawal requests (GNW) received in month	526
Valid switch withdrawal acceptances (GAW-A) received in month	517
Valid switch withdrawal rejections (GAW-R) received in month	17
Valid switch reading renegotiation requests (GNC) received in month	37
Valid switch reading renegotiation acceptances (GAC-A) received in month	38
Valid switch reading renegotiation rejections (GAC-R) received in month	0

Note: A switch transfer notice (GTN) is the last stage required to complete the switching process. This statistic indicates the number of switches completed in the month.

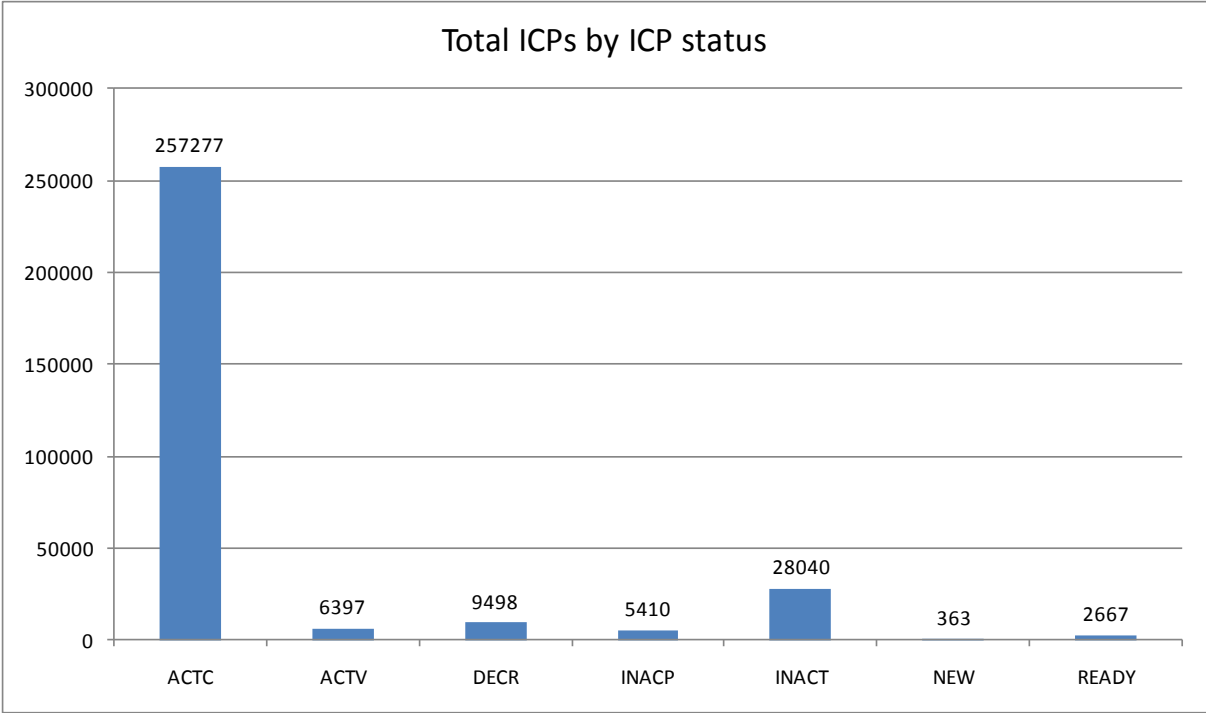
## Switching activity – historical



## Switching gains and losses – May 2011



# ICPs by status – May 2011



Installation control points (ICPs) are the record of customer installations in the gas registry. The meaning of the ICP status codes are as follows:

ACTC—Active contracted (gas is able to flow and the customer has a contract with a retailer)

ACTV—Active vacant (gas is able to flow and the premises is vacant)

DECR—Decommissioned

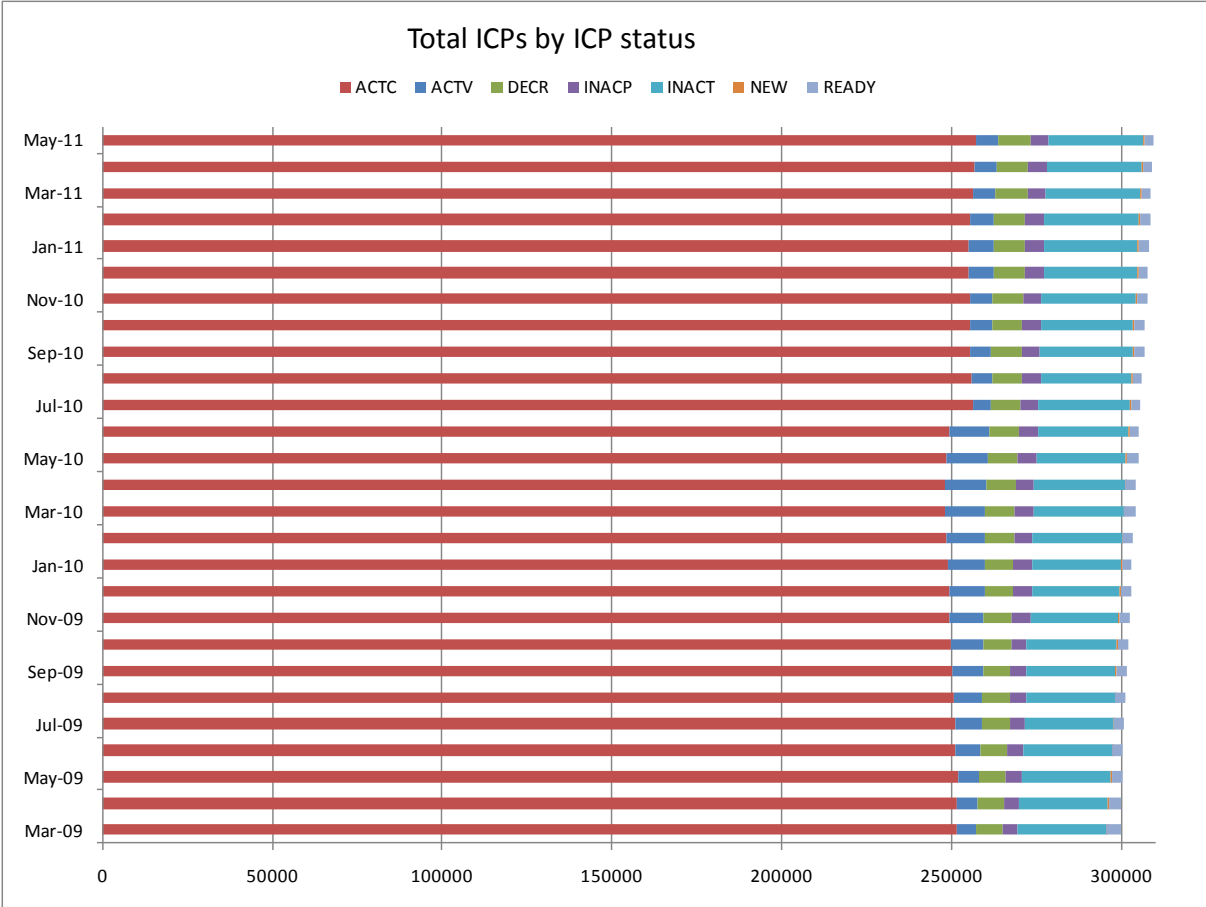
INACP—Inactive permanent (gas unable to flow due to a permanent disconnection)

INACT—Gas unable to flow due to a temporary disconnection

NEW—Newly created ICP, gas not yet able to flow

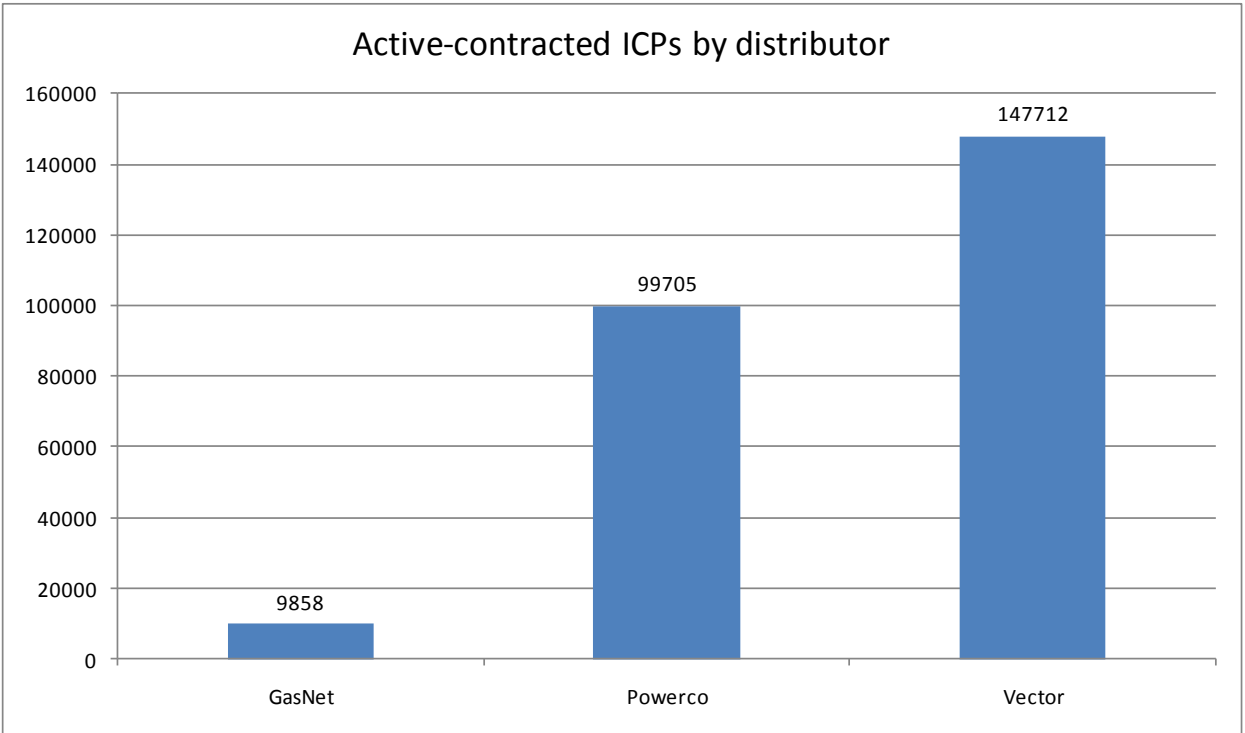
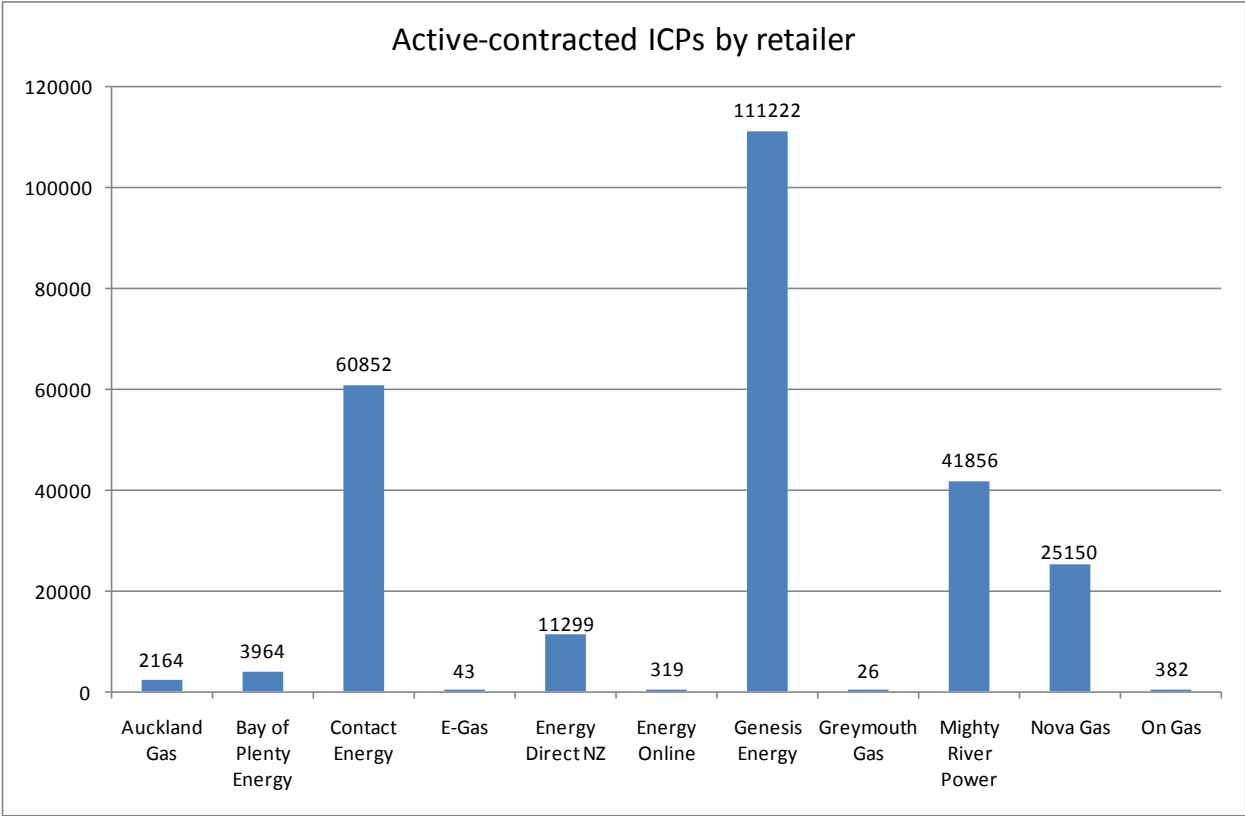
READY—New ICP, gas able to flow, awaiting uplift by retailer

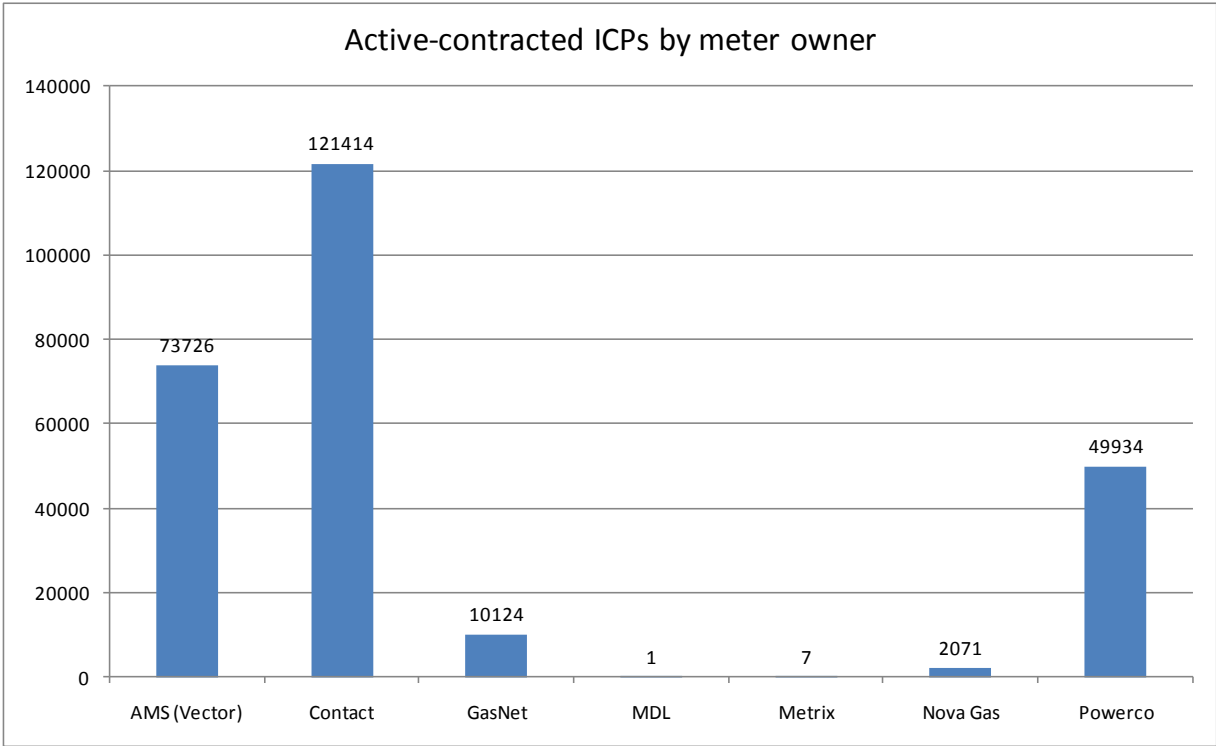
# ICPs by status – historical



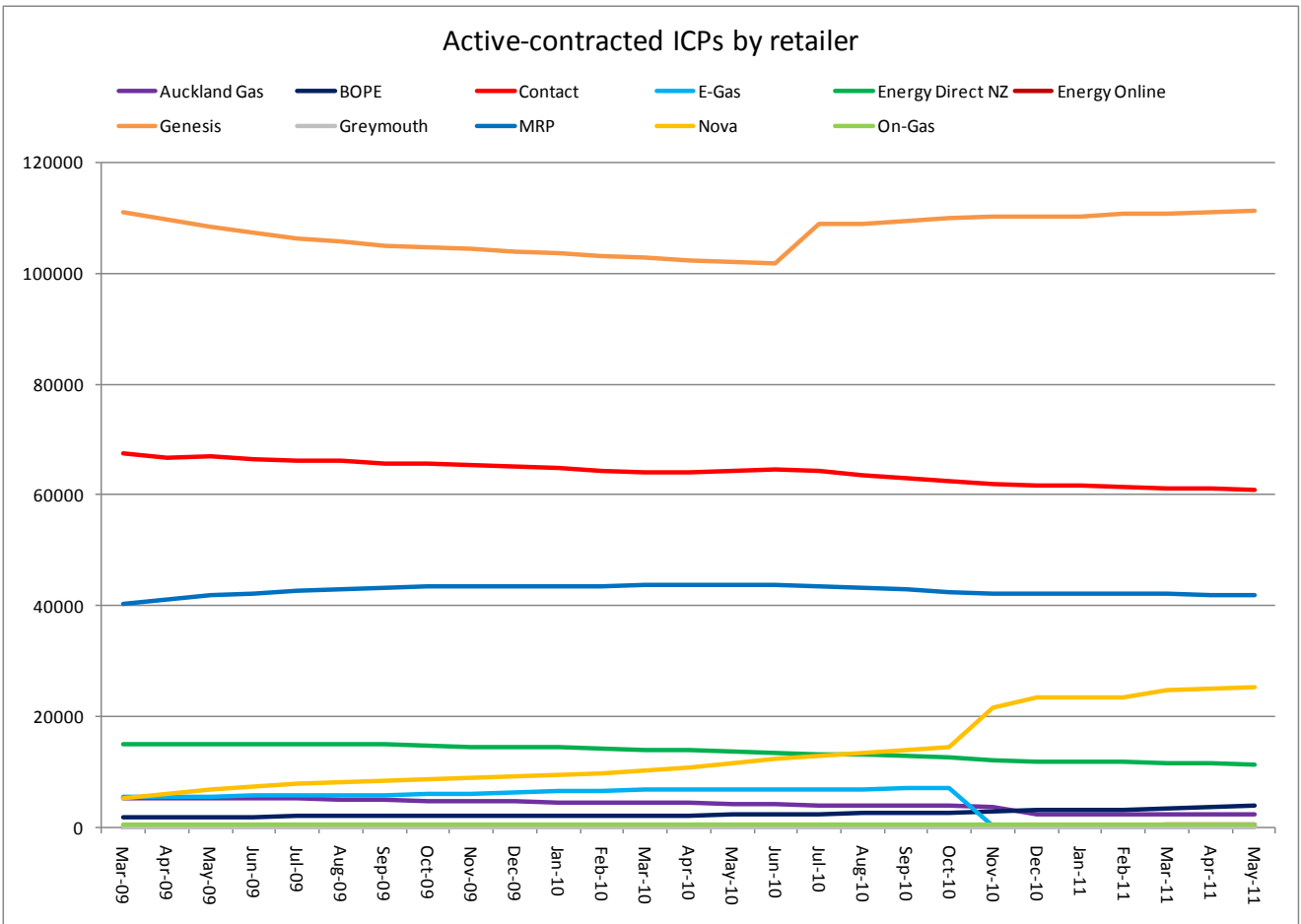
# Market shares – May 2011

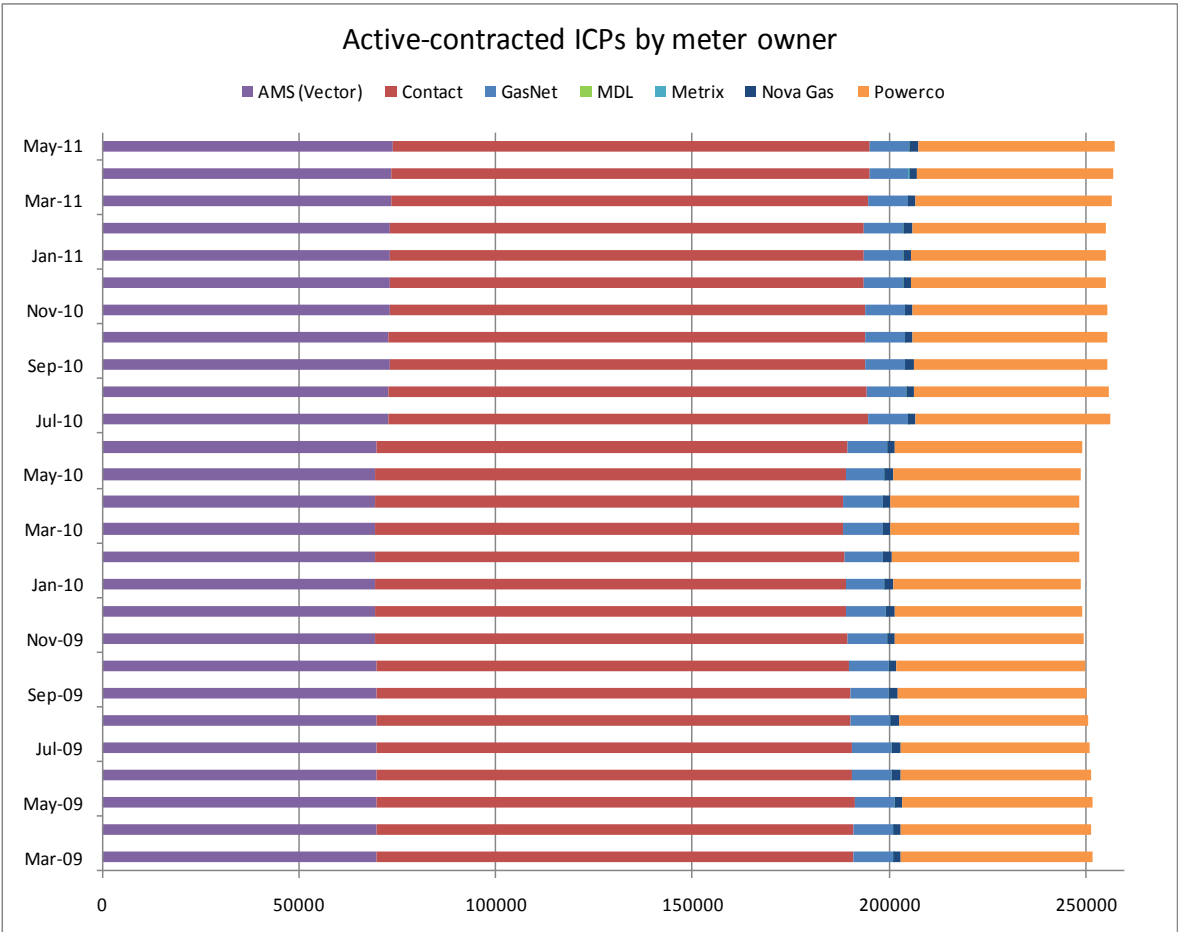
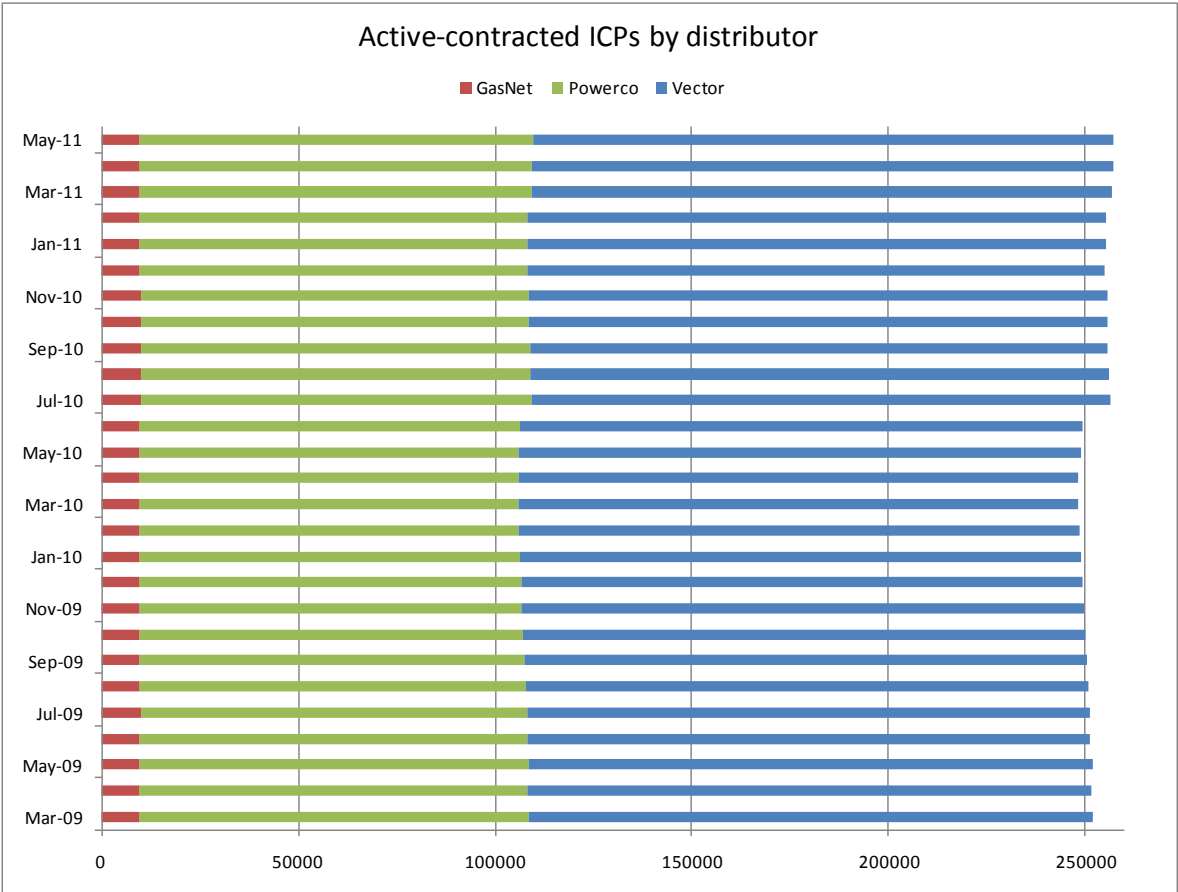
The following charts show the distribution of active-contracted ICPs by retailer, distribution company and meter owner respectively.





### Market shares – historical





## **Active-contracted ICPs by gas gate and retailer – May 2011**

The following table shows the distribution of active-contracted ICPs by gas gate, and the distribution by retailer at each gas gate.

The responsible retailer codes are as follows:

AGCL—Auckland Gas Company

BOPE—Bay of Plenty Energy

CTCT—Contact Energy

EGAS—E-Gas 2000

EGLT—E-Gas Ltd

EDNZ—Energy Direct NZ (Wanganui Gas)

GENG—Genesis Energy

GEND—Genesis Energy

GEOL—Energy Online

GMTH—Greymouth Gas

MEEN—Mighty River Power

GNVG—Nova Gas

GNGC—OnGas (Vector)

Gas Gate	AGCL	BOPE	CTCT	EDNZ	EGAS	EGLT	GEND	GENG	GEOL	GMTH	GNGC	GNVG	MEEN	Total
ALF15501											1			<b>1</b>
ASH34301			55	30				60				60	8	<b>213</b>
BAL08201										1				<b>1</b>
BAL09626										1				<b>1</b>
BEL24510			1662	42	1		2	17315	10		9	1862	1689	<b>22592</b>
BMC17901	67		476	2			1	368	2		4	150	671	<b>1741</b>
BRO36301											1			<b>1</b>
CAM17201			80					1507				44	176	<b>1807</b>
DAN05001			76			1		8			1	22		<b>108</b>
DRU15101			14					3			2	8	3	<b>30</b>
DRU15102			8					11			4	7	8	<b>38</b>
EGC30701			1											<b>1</b>
EGC30702		2	1					2				1		<b>6</b>
ELM12301		12	49	37				232			3	5		<b>338</b>
FLD03001			403	203			2	428			1	652	27	<b>1716</b>
FLH21901			1	3				2						<b>6</b>
FOX22101			164	8			1	23	5		1	90	7	<b>299</b>
GIS07810			852	232			3	2038			3	159		<b>3287</b>
GLB03401											1			<b>1</b>
HAR11801								1			4			<b>5</b>
HEN74101	467		7136	4	1	6	4	5510	22	1	16	811	7000	<b>20978</b>
HPS02993							1							<b>1</b>
HRU16101							1	1				2		<b>4</b>

Gas Gate	AGCL	BOPE	CTCT	EDNZ	EGAS	EGLT	GEND	GENG	GEOL	GMTH	GNGC	GNVG	MEEN	Total
HST05210			3051	295		2	2	410	153		6	458		<b>4377</b>
HTK08301			7					74				2	6	<b>89</b>
HTL16601			3				1	91			3	5	3	<b>106</b>
HTV11301	1	11	1664			4	3	22592			50	503	2159	<b>26987</b>
HUN15301	1			1							2			<b>4</b>
HWA20801		92	436	328		1		1853			4	67		<b>2781</b>
IGW11901		86	65	89				317				12		<b>569</b>
KAP12901			2					2						<b>4</b>
KAW04405		129	7	1				110				5		<b>252</b>
KAW04410											1			<b>1</b>
KAW04411											1			<b>1</b>
KIG16801			4									1	1	<b>6</b>
KIH19101			45				1	1231			1	38	42	<b>1358</b>
KIN02601								4			2		1	<b>7</b>
KIN04310											1			<b>1</b>
KIW34201										1				<b>1</b>
KIW34202								1			1			<b>2</b>
KKI23701			2									1		<b>3</b>
KPA12401		3	3	5				50						<b>61</b>
KRG24101			1	1								2		<b>4</b>
KTK23901											1			<b>1</b>
KUK22401			6					19				4		<b>29</b>
KUR33601											1			<b>1</b>

Gas Gate	AGCL	BOPE	CTCT	EDNZ	EGAS	EGLT	GEND	GENG	GEOL	GMTH	GNGC	GNVG	MEEN	Total
LAB20201			9	63				40				6	1	<b>119</b>
LCF20010			1											<b>1</b>
LNB24301			59	32			1	105			4	89	13	<b>303</b>
LVN24401			1678	108		1		309	71		5	623	70	<b>2865</b>
MGK05401										1				<b>1</b>
MMU08001	1	431	124			1	4	3146		1	3	151	324	<b>4186</b>
MNA23402		6	33	34				167				4		<b>244</b>
MRV16301			1											<b>1</b>
MRV16302		1	39					557				22	70	<b>689</b>
MSD01801			1											<b>1</b>
MSD01802											1			<b>1</b>
MTG17301			2					32					1	<b>35</b>
MTN23801			60	237				147	1		2	13		<b>460</b>
MTP20601								5						<b>5</b>
MUT19001											1			<b>1</b>
NGW14501			14					138				2	6	<b>160</b>
NPL12101		1679	953	1738		1	1	6235	1		6	222		<b>10836</b>
NPS00530			1											<b>1</b>
OAK18601								1						<b>1</b>
OKA13201		2	8	7				42				1		<b>60</b>
OKS32801												1	1	<b>2</b>
OKU16701		20	29	47				128				2		<b>226</b>
OPK13001		9	26	14				127						<b>176</b>

Gas Gate	AGCL	BOPE	CTCT	EDNZ	EGAS	EGLT	GEND	GENG	GEOL	GMTH	GNGC	GNVG	MEEN	Total
OPO32001		49	4				1	55				3		<b>112</b>
ORD24701			1	1								1		<b>3</b>
OTA22601			56	3		1		296				25	6	<b>387</b>
OTB00301			1											<b>1</b>
OTO14101			4					160				15		<b>179</b>
PAH23101								17						<b>17</b>
PAH23201								1				1		<b>2</b>
PAP06603	1		38				1	20				5	53	<b>118</b>
PAP06610	166		4329	6		1	3	749	5	1	57	502	3228	<b>9047</b>
PAU20101			526	46				2408			2	188	86	<b>3256</b>
PGH15901			1											<b>1</b>
PGU13101								14						<b>14</b>
PHT04901			40					37			1	11		<b>89</b>
PIR31101			1					44					4	<b>49</b>
PLN24201			3325	1203		3	1	3852	13		21	6380	253	<b>15051</b>
PPA33201			1					7						<b>8</b>
PTA20901		14	17	23				132			2	3		<b>191</b>
PTR32601		4	11					299			1	17	12	<b>344</b>
PUK04201	4		65				1	22	1			32	55	<b>180</b>
RAG33401												1		<b>1</b>
RAM15201			1								2			<b>3</b>
ROT08101		264	286			3		2700			12	216	434	<b>3915</b>
RPR30801			2					20				1	1	<b>24</b>

Gas Gate	AGCL	BOPE	CTCT	EDNZ	EGAS	EGLT	GEND	GENG	GEOL	GMTH	GNGC	GNVG	MEEN	Total
STR10201		30	93	93			1	661				24		<b>902</b>
TAC31001											1			<b>1</b>
TAT16401										1				<b>1</b>
TAU07001		104	267	2		1		1359			1	160	165	<b>2059</b>
TCC00201			1											<b>1</b>
THO22701			2					11				2		<b>15</b>
TIR33501			1											<b>1</b>
TIR33502		2	2			1		54				11	5	<b>75</b>
TKN17001			1					143			1	9		<b>154</b>
TKP05101												1		<b>1</b>
TKR19701		4	50					877			1	53	39	<b>1024</b>
TKS17401			1					17		1	2	1		<b>22</b>
TPK33301		28	4				1	533				25	24	<b>615</b>
TRC02003			1											<b>1</b>
TRG07701		593	135	1		1		3113			6	228	262	<b>4339</b>
TTK30601		2						4						<b>6</b>
TUK06501	1		6					1			2	1	1	<b>12</b>
TWA35610			8311	84		5	7	10031	18		30	7545	2427	<b>28458</b>
WAG21501			470	5988		2		2658	2	2	2	148		<b>9272</b>
WAK22801			198	21				1182				66	10	<b>1477</b>
WEL18301			2					19				3	1	<b>25</b>
WHG07501			93	2				931			5	100	79	<b>1210</b>
WHK32101		245	9			1		151			3	35	11	<b>455</b>

Gas Gate	AGCL	BOPE	CTCT	EDNZ	EGAS	EGLT	GEND	GENG	GEOL	GMTH	GNGC	GNVG	MEEN	Total
WKE19201											1			<b>1</b>
WRK18901			23					149			2	16	66	<b>256</b>
WST03610	1428		22085	10		3	8	6276	12	14	74	2715	20947	<b>53572</b>
WTA16501				1				38		1		3	1	<b>44</b>
WTG06910			548	12		1	1	4538	3		3	410	538	<b>6054</b>
WTK33901	7		291				1	1327				34	688	<b>2348</b>
WTK33902	20		135					196				24	173	<b>548</b>
WTR12001		142	100	242		1		619			2	28		<b>1134</b>
WTT20301											1			<b>1</b>
WVY23601			2				1	4						<b>7</b>
<b>Total</b>	<b>2164</b>	<b>3964</b>	<b>60852</b>	<b>11299</b>	<b>2</b>	<b>41</b>	<b>55</b>	<b>111167</b>	<b>319</b>	<b>26</b>	<b>382</b>	<b>25150</b>	<b>41856</b>	<b>257277</b>