

Gas Registry Statistics - January 2012

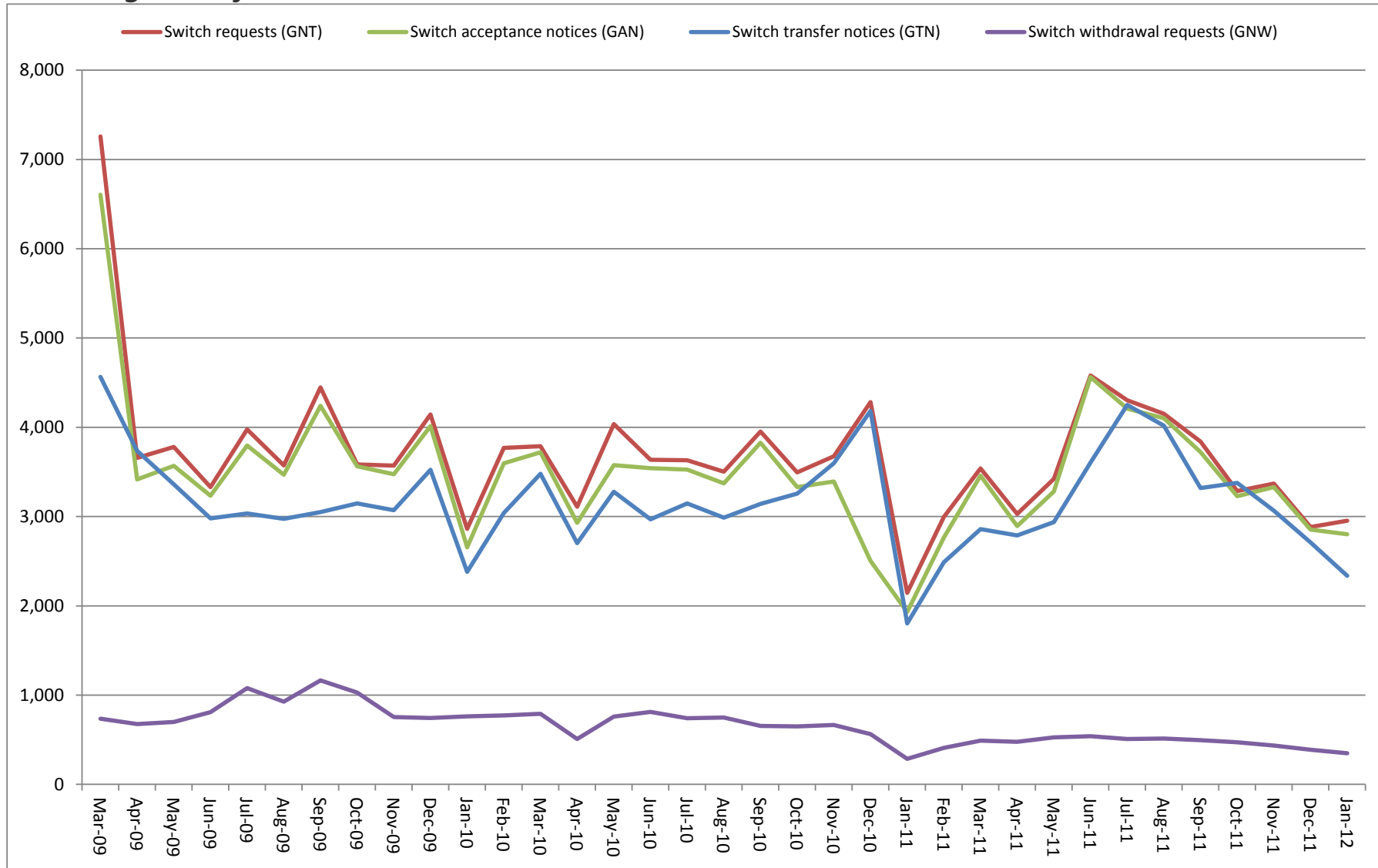
The following report provides statistics and charts illustrating gas registry usage, switching volumes and breakdowns of retailer, distributor and meter owner market shares. The information is provided in accordance with version 1.2 of the Determinations by the Industry Body (Gas Industry Co) under the Gas (Switching Arrangements) Rules 2008, dated 20 February 2009.

Summary registry statistics – January 2012

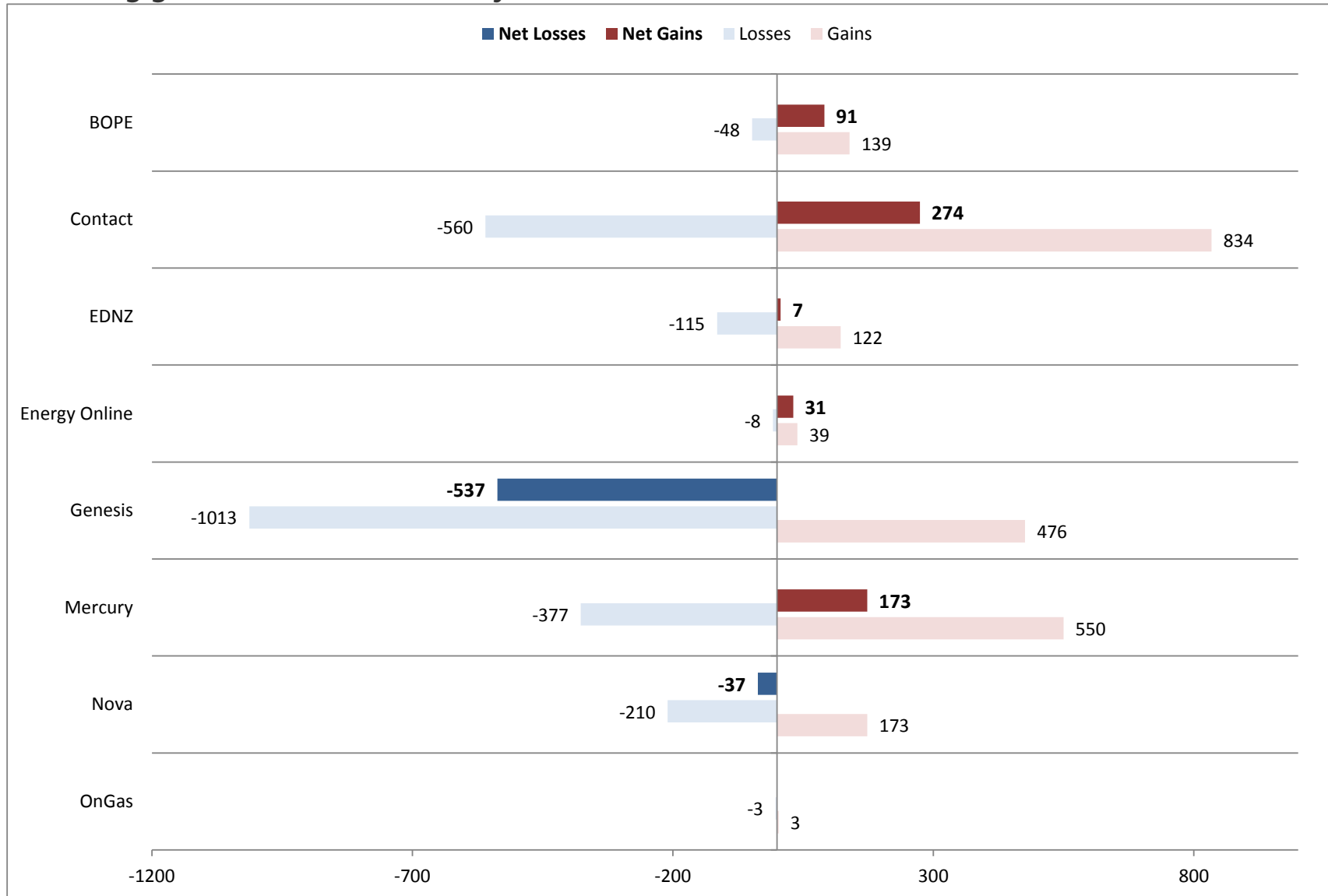
ICP enquiries processed in month (Online)	19,469
ICP enquiries processed in month (Offline)	15,609,586
Total ICP enquiries processed in month	15,629,055
ICPs added to the registry in month	217
ICPs changed in month	94,723
ICPs decommissioned in month	10
Valid standard switch requests (GNT-S) received in month	1,232
Valid move switch requests (GNT-SM) received in month	1,721
Valid switch requests (GNT) received in month	2,953
Valid switch acceptance notices (GAN) received in month	2,802
Valid switch transfer notices (GTN) received in month	2,336
Valid switch withdrawal requests (GNW) received in month	350
Valid switch withdrawal acceptances (GAW-A) received in month	309
Valid switch withdrawal rejections (GAW-R) received in month	14
Valid switch reading renegotiation requests (GNC) received in month	87
Valid switch reading renegotiation acceptances (GAC-A) received in month	81
Valid switch reading renegotiation rejections (GAC-R) received in month	0

Note: A switch transfer notice (GTN) is the last stage required to complete the switching process. This statistic indicates the number of switches completed in the month.

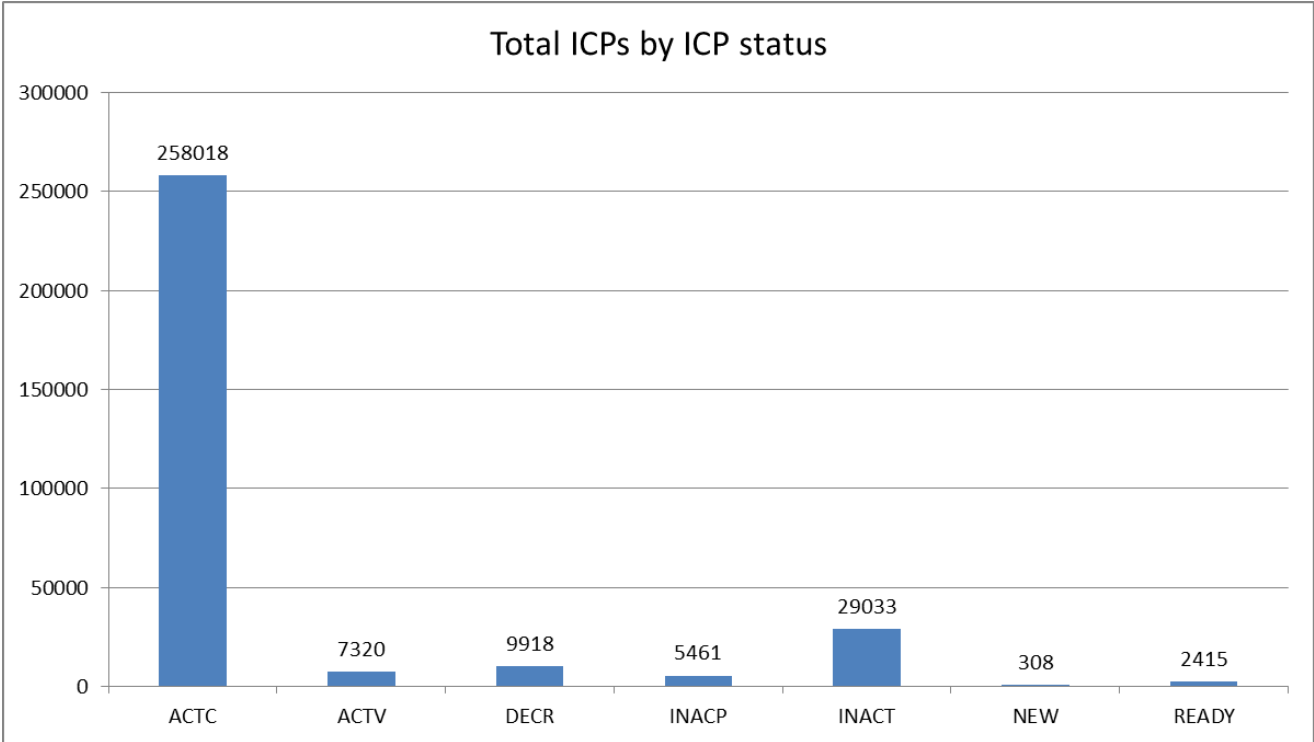
Switching activity – historical



Switching gains and losses – January 2012



ICPs by status – January 2012



Installation control points (ICPs) are the record of customer installations in the gas registry. The meaning of the ICP status codes are as follows:

ACTC—Active contracted (gas is able to flow and the customer has a contract with a retailer)

ACTV—Active vacant (gas is able to flow and the premises is vacant)

DECR—Decommissioned

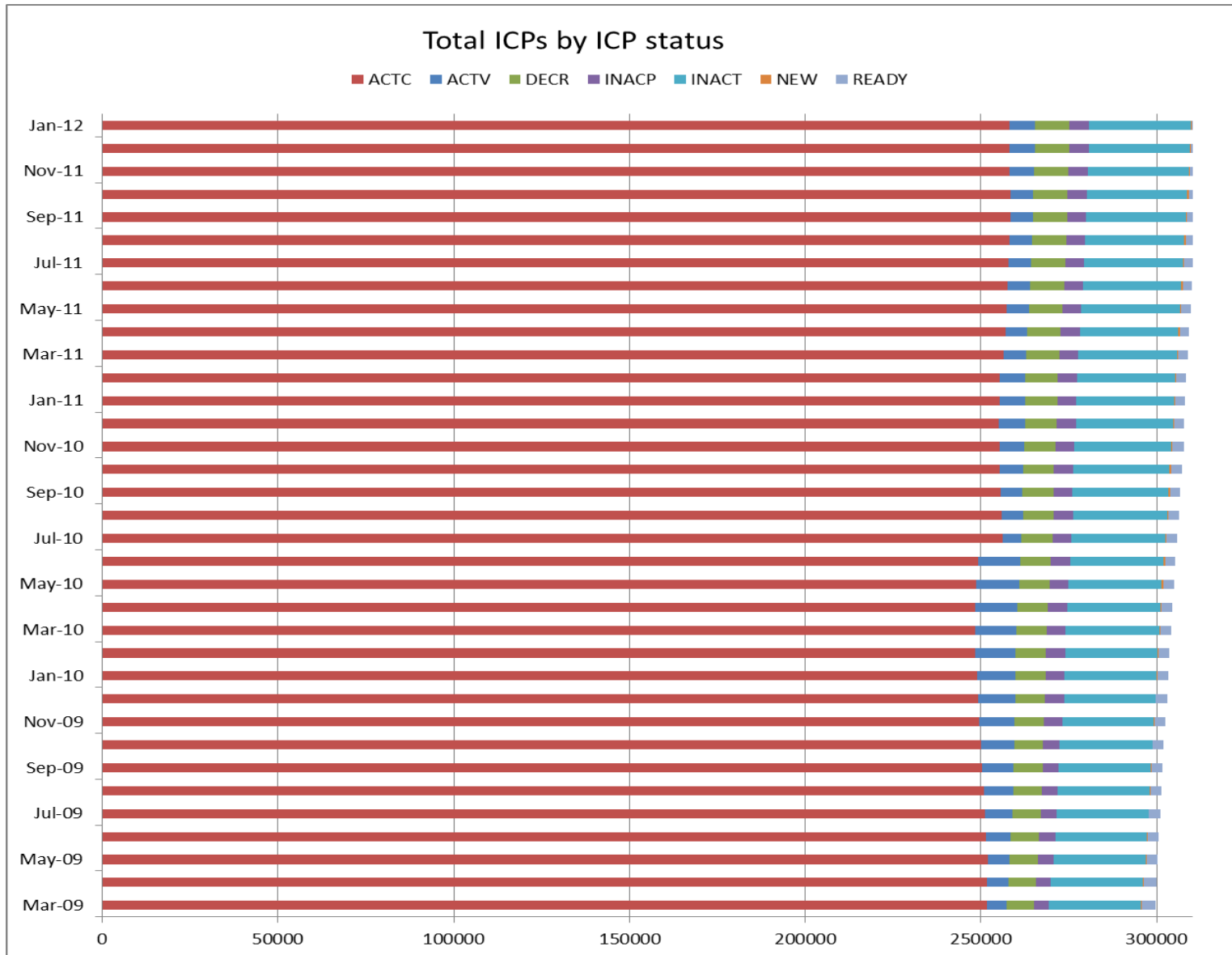
INACP—Inactive permanent (gas unable to flow due to a permanent disconnection)

INACT—Gas unable to flow due to a temporary disconnection

NEW—Newly created ICP, gas not yet able to flow

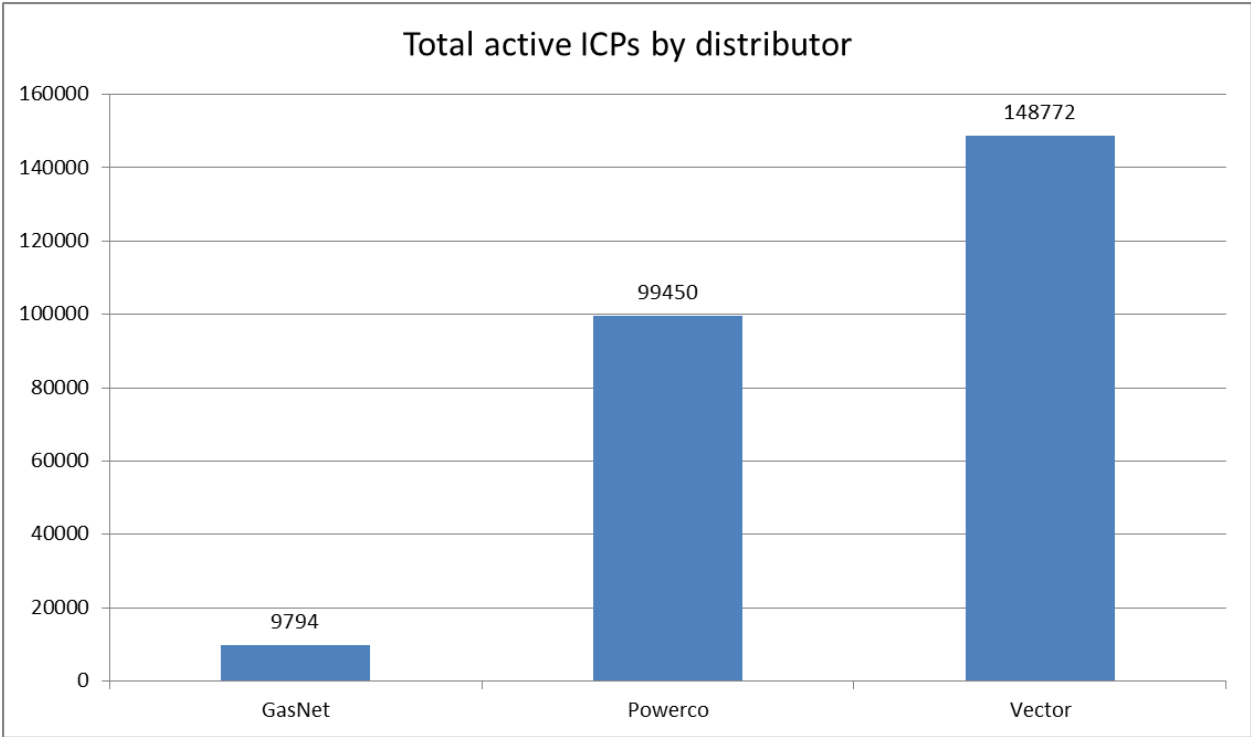
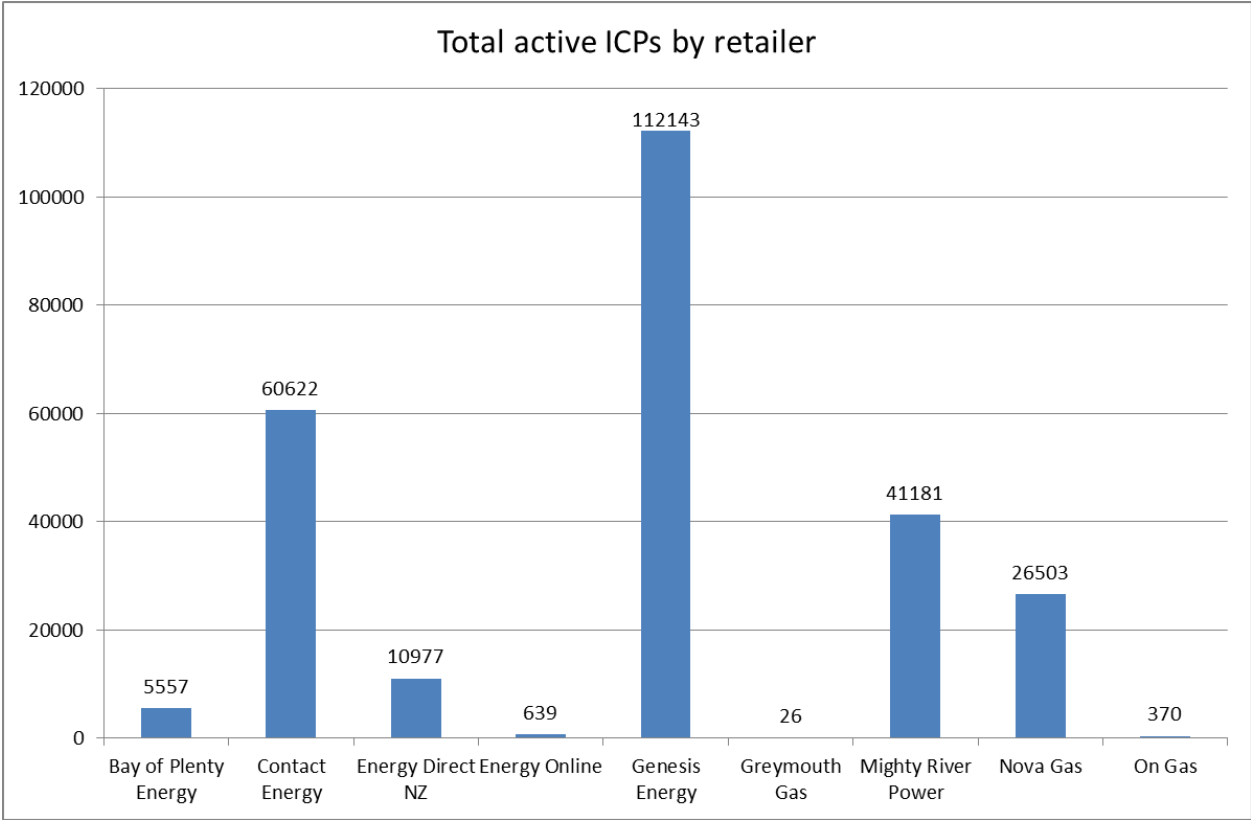
READY—New ICP, gas able to flow, awaiting uplift by retailer

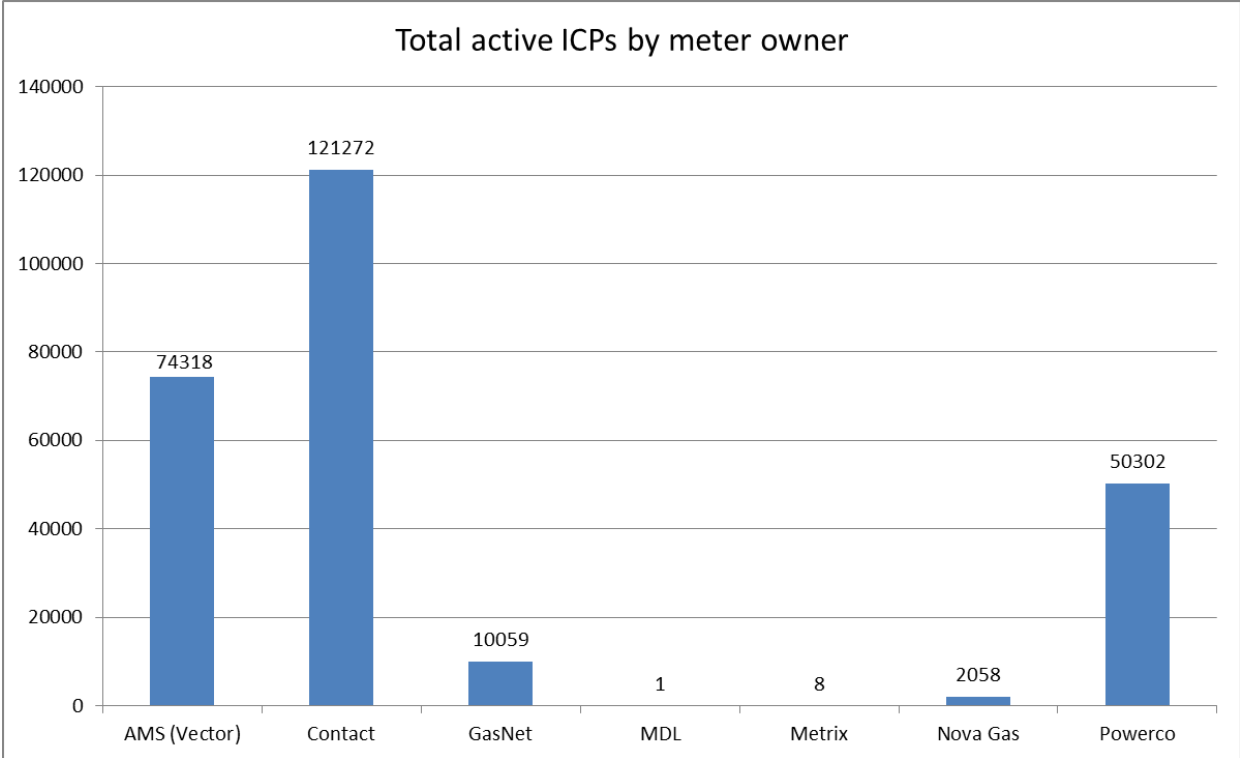
ICPs by status – Historical



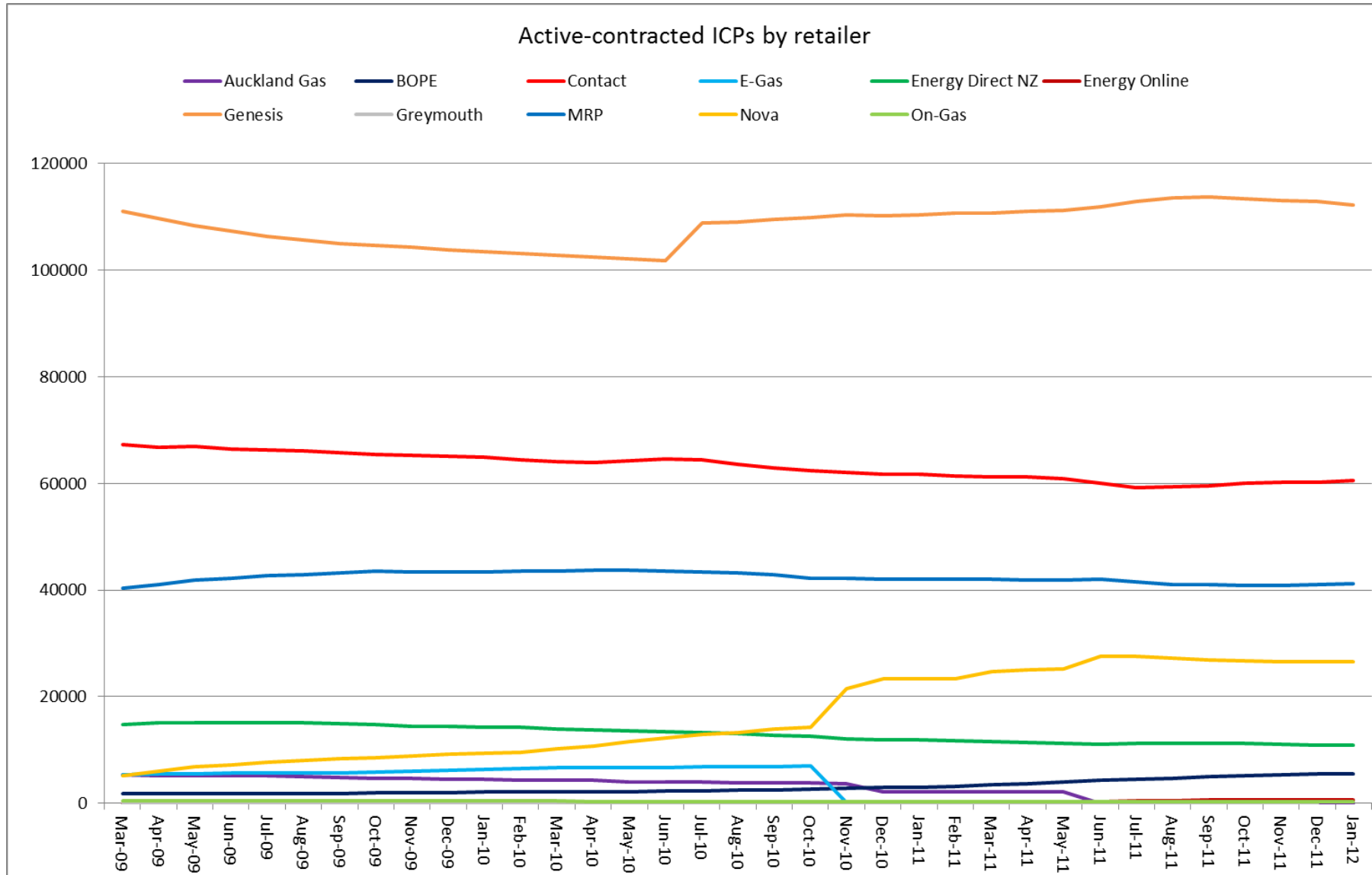
Market shares – January 2012

The following charts show the distribution of active-contracted ICPs by retailer, distribution company and meter owner respectively.

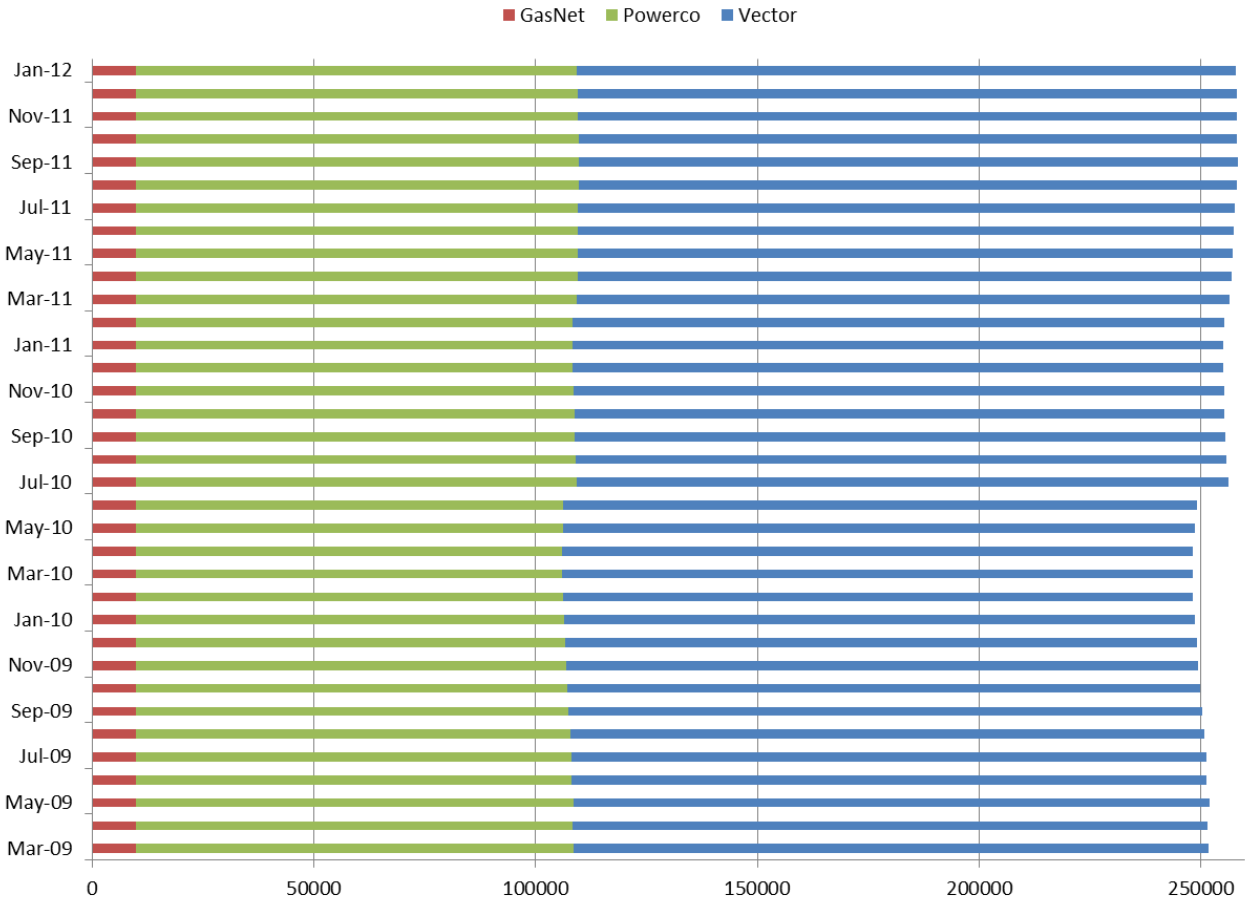




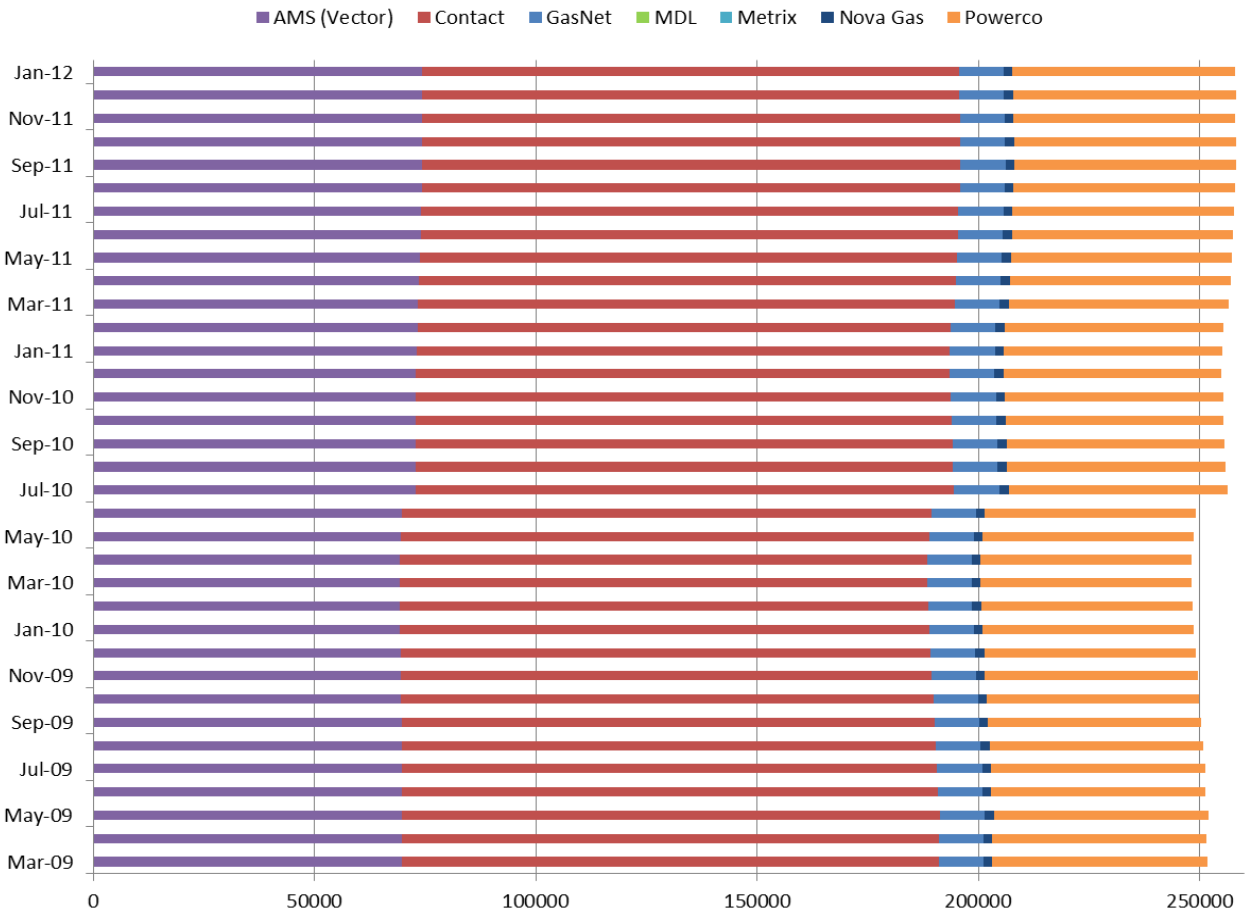
Market shares – historical



Active-contracted ICPs by distributor



Active-contracted ICPs by meter owner



Active-contracted ICPs by gas gate and retailer – January 2012

The following table shows the distribution of active-contracted ICPs by gas gate, and the distribution by retailer at each gas gate.

The responsible retailer codes are as follows:

BOPE—Bay of Plenty Energy

CTCT—Contact Energy

EDNZ—Energy Direct NZ (Wanganui Gas)

GEND—Genesis Energy (TOU)

GENG—Genesis Energy

GEOL—Energy Online

GMTH—Greymouth Gas

GNGC—OnGas (Vector)

GNVG—Nova Energy

MEEN—Mercury Energy (Mighty River Power)

The gas gate names associated with the codes used in the table can be found here:

http://gasindustry.co.nz/sites/default/files/u14/All_Gas_Gates_301009.pdf

Gas Gate	BOPE	CTCT	EDNZ	GEND	GENG	GEOL	GMTH	GNGC	GNVG	MEEN	Total
ALF15501								1			1
ASH34301		49	24		63				55	25	216
BAL08201							1				1
BAL09626							1				1
BEL24510		1771	292	2	17058	22		9	1719	1658	22531
BMC17901		526	4	1	408	3		4	208	635	1789
BRO36301								1			1
CAM17201		118			1512				43	163	1836
DAN05001		76			9			1	22		108
DRU15101		13			4			1	8	2	28
DRU15102		21			13			4	6	19	63
EGC30701		1									1
EGC30702	2	1			2				1		6
ELM12301	43	35	24		205			3	4	16	330
FLD03001		384	192	2	445	1		1	592	98	1715
FLH21901		2	3								5
FOX22101		153	8	1	23	10		1	88	8	292
GIS07810		906	241	3	1951			3	152		3256
GLB03401								1			1
HAR11801					1			4			5
HEN74101		7304	9	4	6288	94	1	15	1251	6367	21333
HPS02993				1							1
HRU16101				1	1				2		4

Gas Gate	BOPE	CTCT	EDNZ	GEND	GENG	GEOL	GMTH	GNGC	GNVG	MEEN	Total
HST05210		2507	270	2	446	176		9	959		4369
HTK08301		50	2		311				3	19	385
HTL16601		3		1	92			3	5	3	107
HTV11301	19	1931	4	4	22149			51	479	1971	26608
HUN15301			1					2	1		4
HWA20801	169	374	259		1732			4	54	154	2746
IGW11901	148	41	62		286				9	18	564
KAP12901		2			2						4
KAW04405	130	9	1		104				5		249
KAW04410								1			1
KAW04411								1			1
KIG16801		4							1	1	6
KIH19101		59		1	1211				36	35	1342
KIN02601		1			3			2		1	7
KIN04310								1			1
KIW34201							1				1
KIW34202					1			1			2
KKI23701		2							1		3
KPA12401	3	5	5		42					3	58
KRG24101		1	1						2		4
KTK23901								1			1
KUK22401		6			18				4		28
KUR33601								1			1

Gas Gate	BOPE	CTCT	EDNZ	GEND	GENG	GEOL	GMTH	GNGC	GNVG	MEEN	Total
LAB20201		11	60		41				6		118
LCF20010		1									1
LNB24301		69	27	1	99			4	76	18	294
LVN24401		1599	96		357	117		5	580	66	2820
MGK05401							1				1
MMU08001	431	175	2	4	3124		1	3	142	311	4193
MNA23402	15	30	25		152				4	13	239
MNG34001								1			1
MRV16301		1									1
MRV16302		55			547				23	64	689
MSD01801				1							1
MSD01802								1			1
MTG17301		1			30					2	33
MTN23801		60	227		145	1		2	15	1	451
MTP20601		1			5						6
MUT19001								1			1
NGW14501		14			129				2	3	148
NPL12101	2671	757	1197	2	5701	6		5	192	346	10877
NPS00530		1									1
OAK18601					1						1
OKA13201	6	5	5		37				1	5	59
OKS32801									1	1	2
OKU16701	50	21	31		119				2	12	235

Gas Gate	BOPE	CTCT	EDNZ	GEND	GENG	GEOL	GMTH	GNGC	GNVG	MEEN	Total
OPK13001	13	22	13		124					6	178
OPO32001	50	3		1	52				3		109
ORD24701		2	1						1		4
OTA22601		59	5		291				26	5	386
OTB00301		1									1
OTO14101		4			157				14		175
PAH23101					21						21
PAH23201					2				1		3
PAP06604		49		1	32				4	57	143
PAP06610		4293	6	3	865	14	1	54	699	3265	9200
PAU20101		574	57		2368	1		2	191	70	3263
PGH15901										1	1
PGU13101					14						14
PHT04901		40			35			1	11		87
PIR31101		2			44					3	49
PLN24201		3206	1138	1	3876	24		20	5818	836	14919
PPA33201	1	2			16				1	2	22
PTA20901	15	12	21		130			2	3	5	188
PTR32601	4	16	1		293			1	15	12	342
PUK04201		69		1	22	3			39	50	184
PYE36601	2	1			2					1	6
RAG33401									1		1
RAM15201		1						2			3

Gas Gate	BOPE	CTCT	EDNZ	GEND	GENG	GEOL	GMTH	GNGC	GNVG	MEEN	Total
ROT08101	318	315	1		2643			12	209	376	3874
RPR30801	1	2			18				1	1	23
STR10201	148	60	55	1	592				20	22	898
TAC31001								1			1
TAT16401							1				1
TAU07001	139	331	3		1297			1	152	135	2058
TAW31004		1			8				1		10
TCC00201		1									1
THO22701		2			10				2	1	15
TIR33501		1									1
TIR33502	2	5			54				11	3	75
TKN17001		1			140				9		150
TKP05101									1		1
TKR19701	4	61	2		844			1	51	37	1000
TKS17401		2	1		17		1		2		23
TPK33301	29	11	1	1	521				24	22	609
TRC02003		1									1
TRG07701	608	171	2		3109			7	218	256	4371
TTK30601	1	1			3						5
TUK06501		4			1	1		2	2	2	12
TWA35610		8095	507	8	10435	34		27	6888	2424	28418
WAG21501		521	5808		2704	9	2	2	145	28	9219
WAK22801		214	23		1164				63	9	1473

Gas Gate	BOPE	CTCT	EDNZ	GEND	GENG	GEOL	GMTH	GNGC	GNVG	MEEN	Total
WEL18301		2			18				3	2	25
WHG07501		111	3		901			6	97	85	1203
WHK32101	236	10			147			3	36	10	442
WKE19201								1			1
WRK18901		36			146			1	17	55	255
WST03610		21937	18	8	7437	108	14	69	4456	20047	54094
WTA16501		1			38		1	1	3	1	45
WTG06910		563	101	1	4556	12		3	390	497	6123
WTK33901		426			1322				48	621	2417
WTK33902		160			210	2			45	144	561
WTR12001	299	62	138		535	1		2	28	52	1117
WTT20301								1			1
WVY23601		2		1	4						7
Grand Total	5557	60622	10977	58	112085	639	26	370	26503	41181	258018