

# Gas Registry Statistics - November 2011

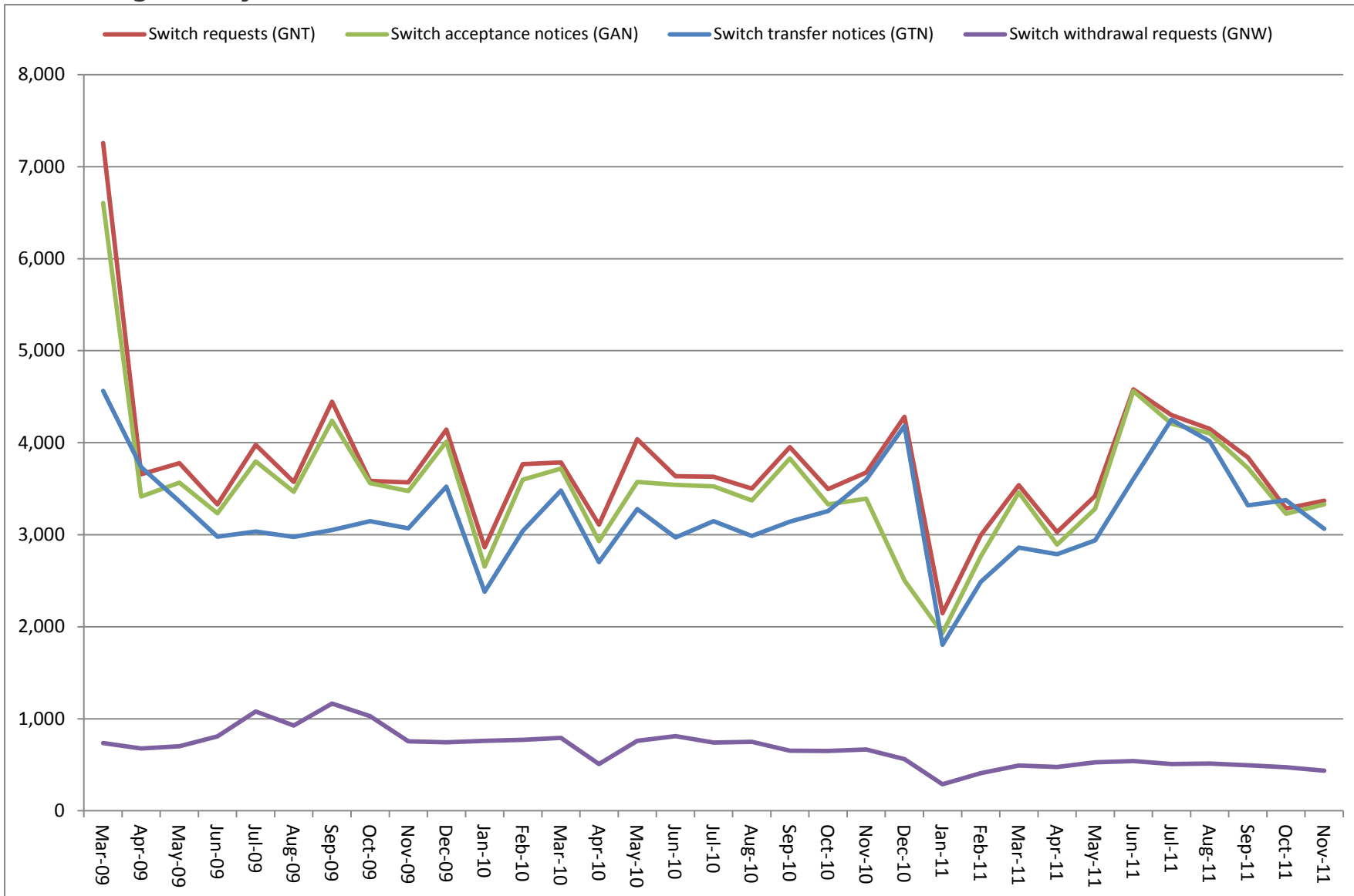
The following report provides statistics and charts illustrating gas registry usage, switching volumes and breakdowns of retailer, distributor and meter owner market shares. The information is provided in accordance with version 1.2 of the Determinations by the Industry Body (Gas Industry Co) under the Gas (Switching Arrangements) Rules 2008, dated 20 February 2009.

## Summary registry statistics – November 2011

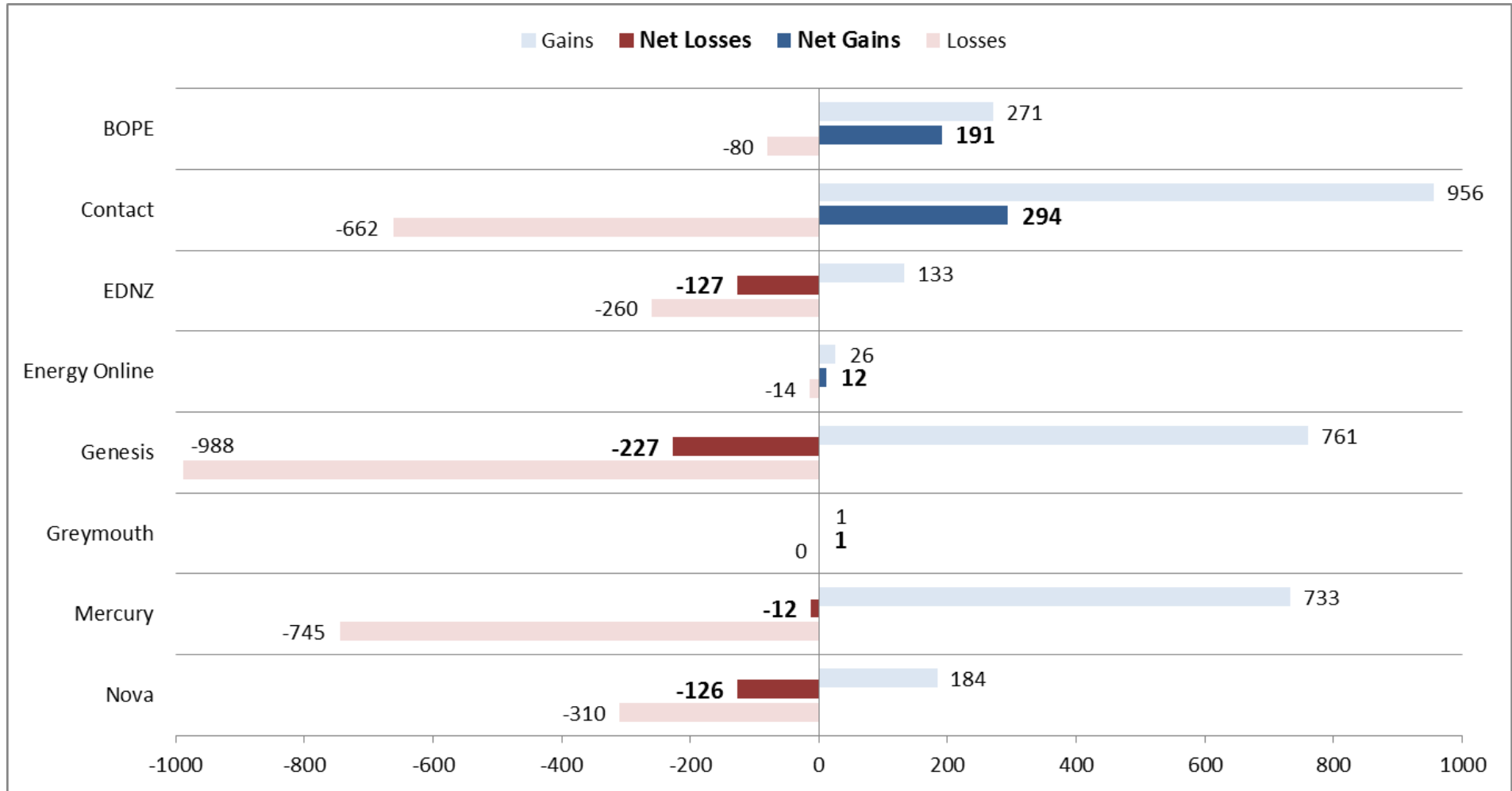
ICP enquiries processed in month (Online)	21,790
ICP enquiries processed in month (Offline)	11,500,564
<b>Total ICP enquiries processed in month</b>	<b>11,522,354</b>
ICPs added to the registry in month	400
ICPs changed in month	1,351
ICPs decommissioned in month	21
Valid standard switch requests (GNT-S) received in month	1,737
Valid move switch requests (GNT-SM) received in month	1,633
<b>Valid switch requests (GNT) received in month</b>	<b>3,370</b>
Valid switch acceptance notices (GAN) received in month	3,330
<b>Valid switch transfer notices (GTN) received in month</b>	<b>3,065</b>
Valid switch withdrawal requests (GNW) received in month	436
Valid switch withdrawal acceptances (GAW-A) received in month	411
Valid switch withdrawal rejections (GAW-R) received in month	10
Valid switch reading renegotiation requests (GNC) received in month	80
Valid switch reading renegotiation acceptances (GAC-A) received in month	81
Valid switch reading renegotiation rejections (GAC-R) received in month	3

Note: A switch transfer notice (GTN) is the last stage required to complete the switching process. This statistic indicates the number of switches completed in the month.

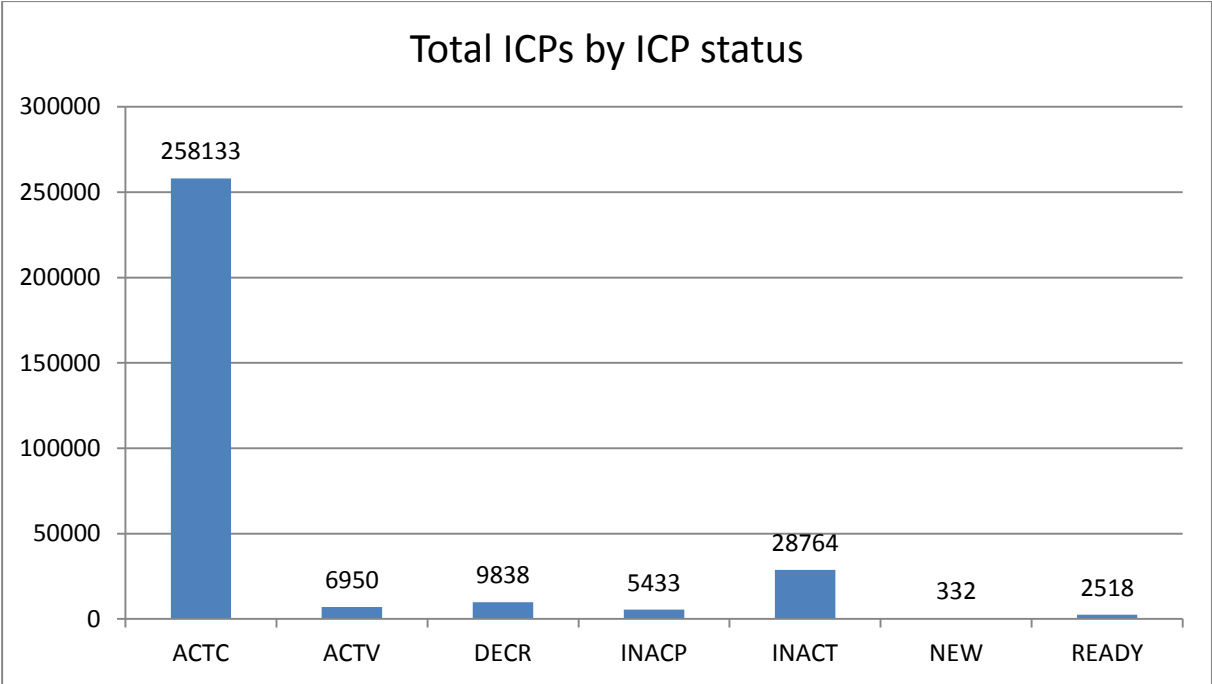
## Switching activity – historical



## Switching gains and losses – November 2011



# ICPs by status – November 2011



Installation control points (ICPs) are the record of customer installations in the gas registry. The meaning of the ICP status codes are as follows:

ACTC—Active contracted (gas is able to flow and the customer has a contract with a retailer)

ACTV—Active vacant (gas is able to flow and the premises is vacant)

DECR—Decommissioned

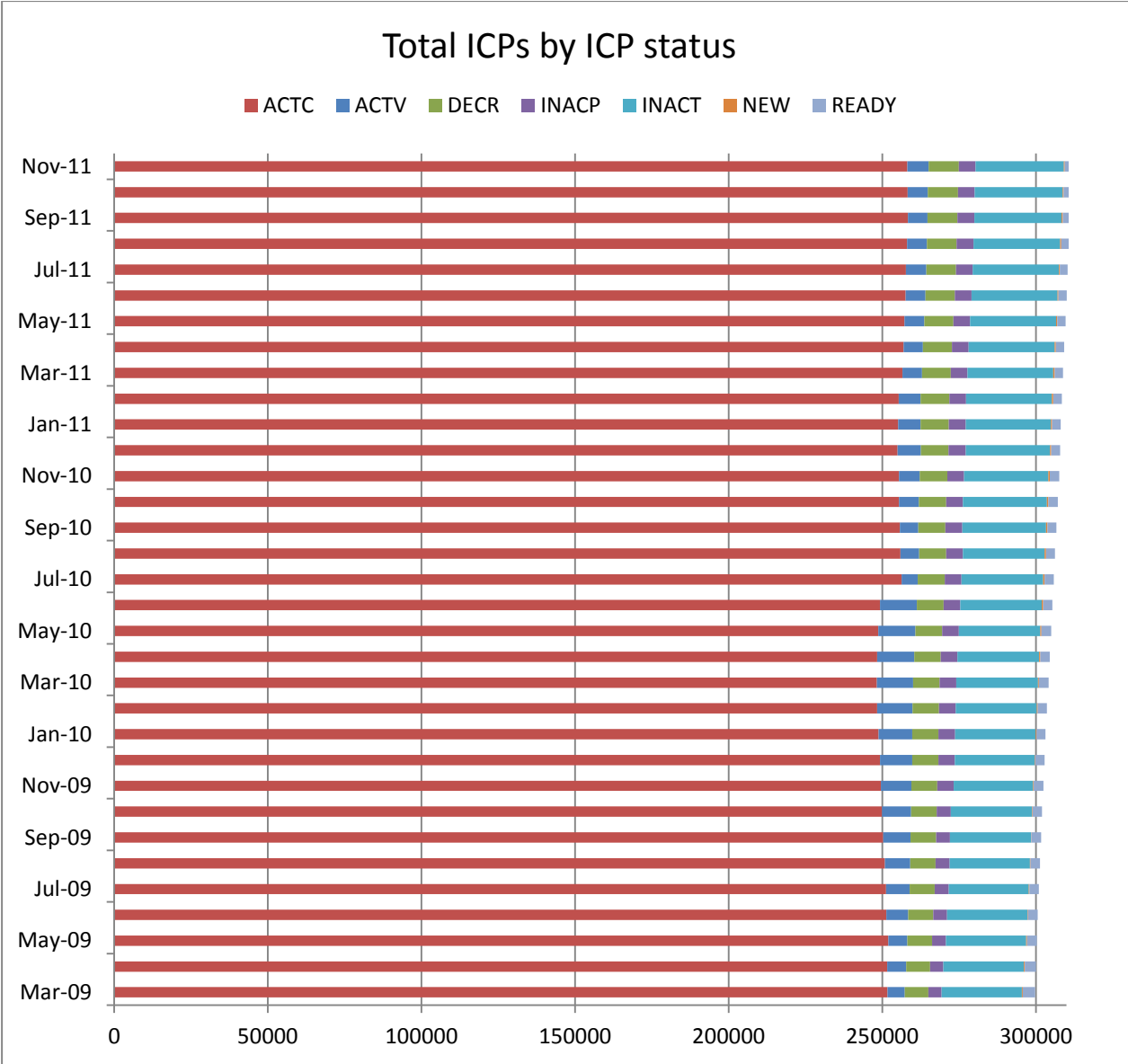
INACP—Inactive permanent (gas unable to flow due to a permanent disconnection)

INACT—Gas unable to flow due to a temporary disconnection

NEW—Newly created ICP, gas not yet able to flow

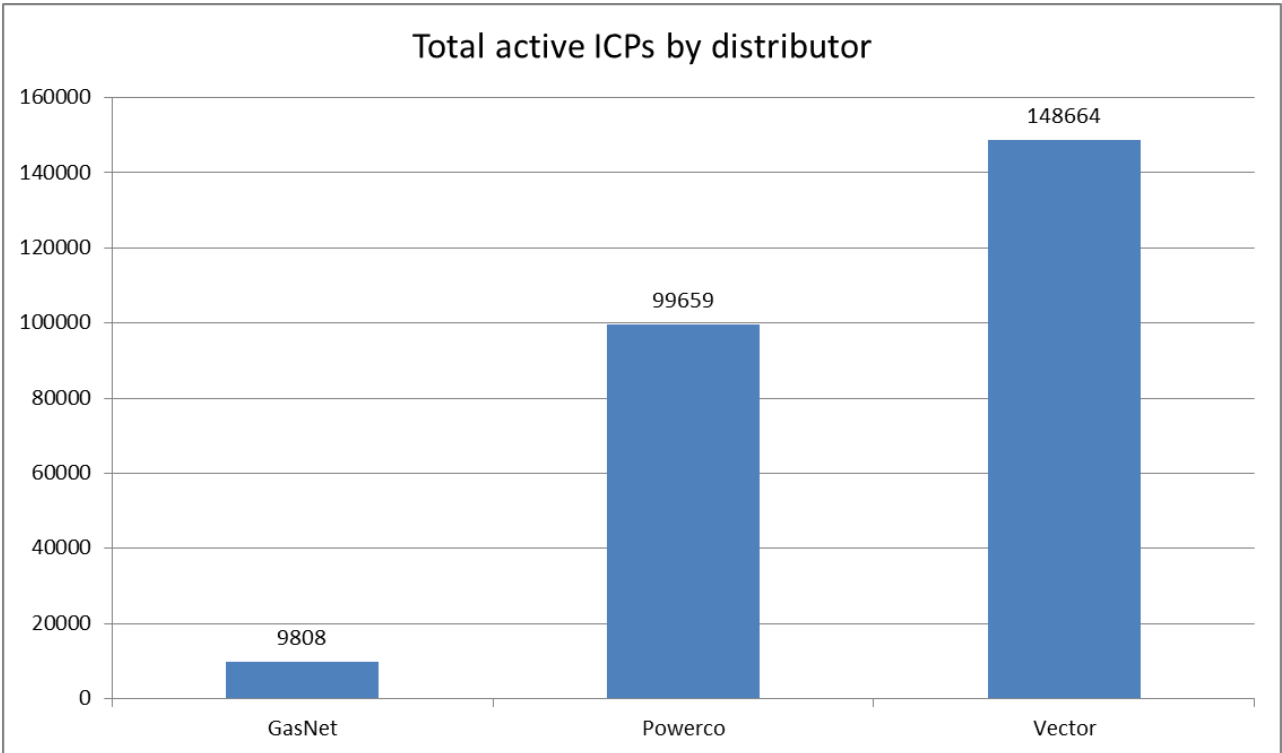
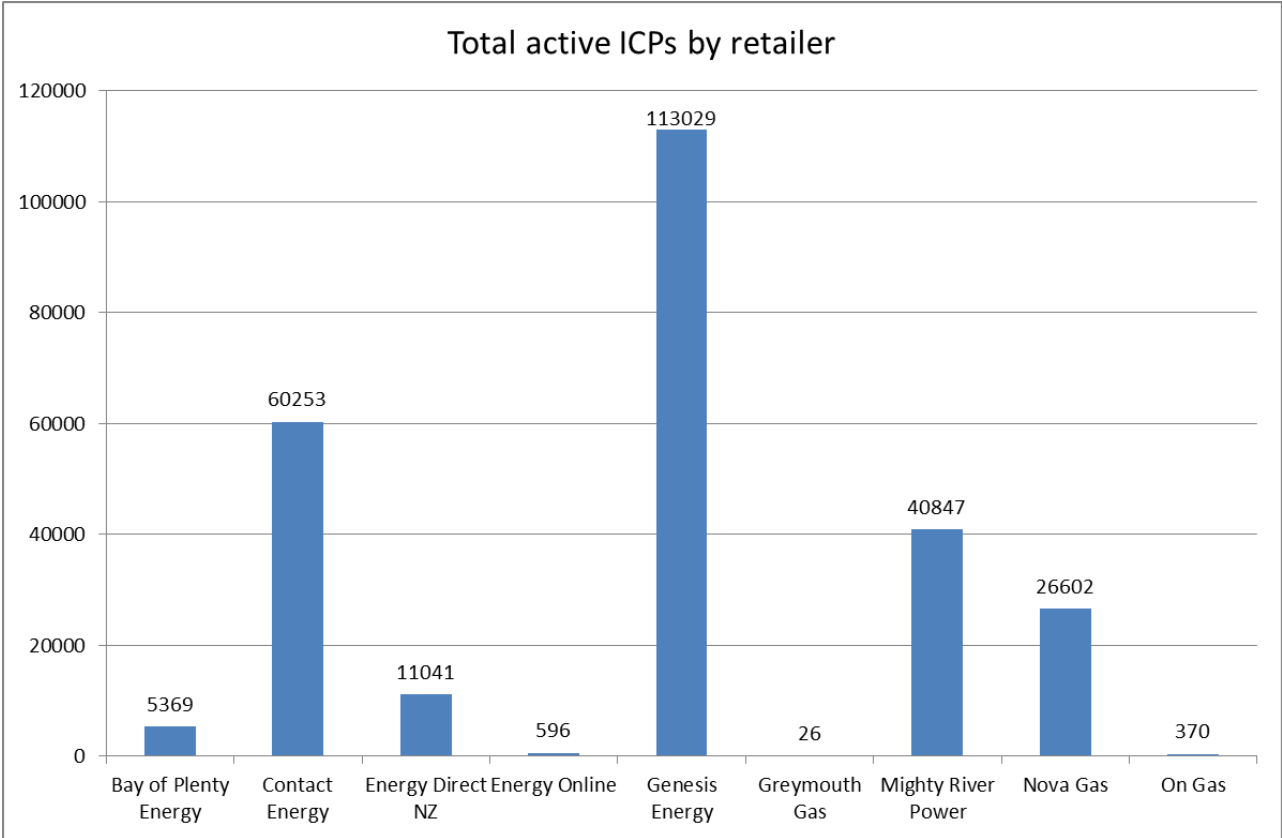
READY—New ICP, gas able to flow, awaiting uplift by retailer

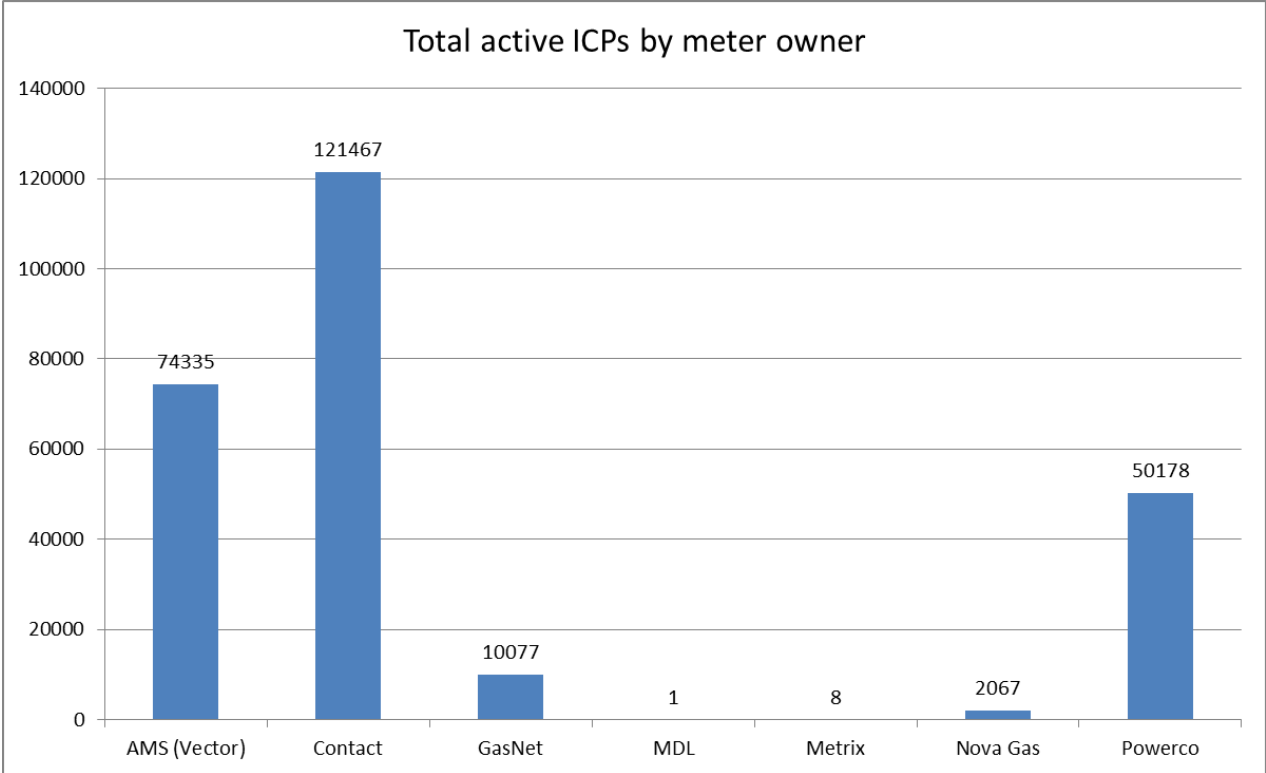
# ICPs by status – historical



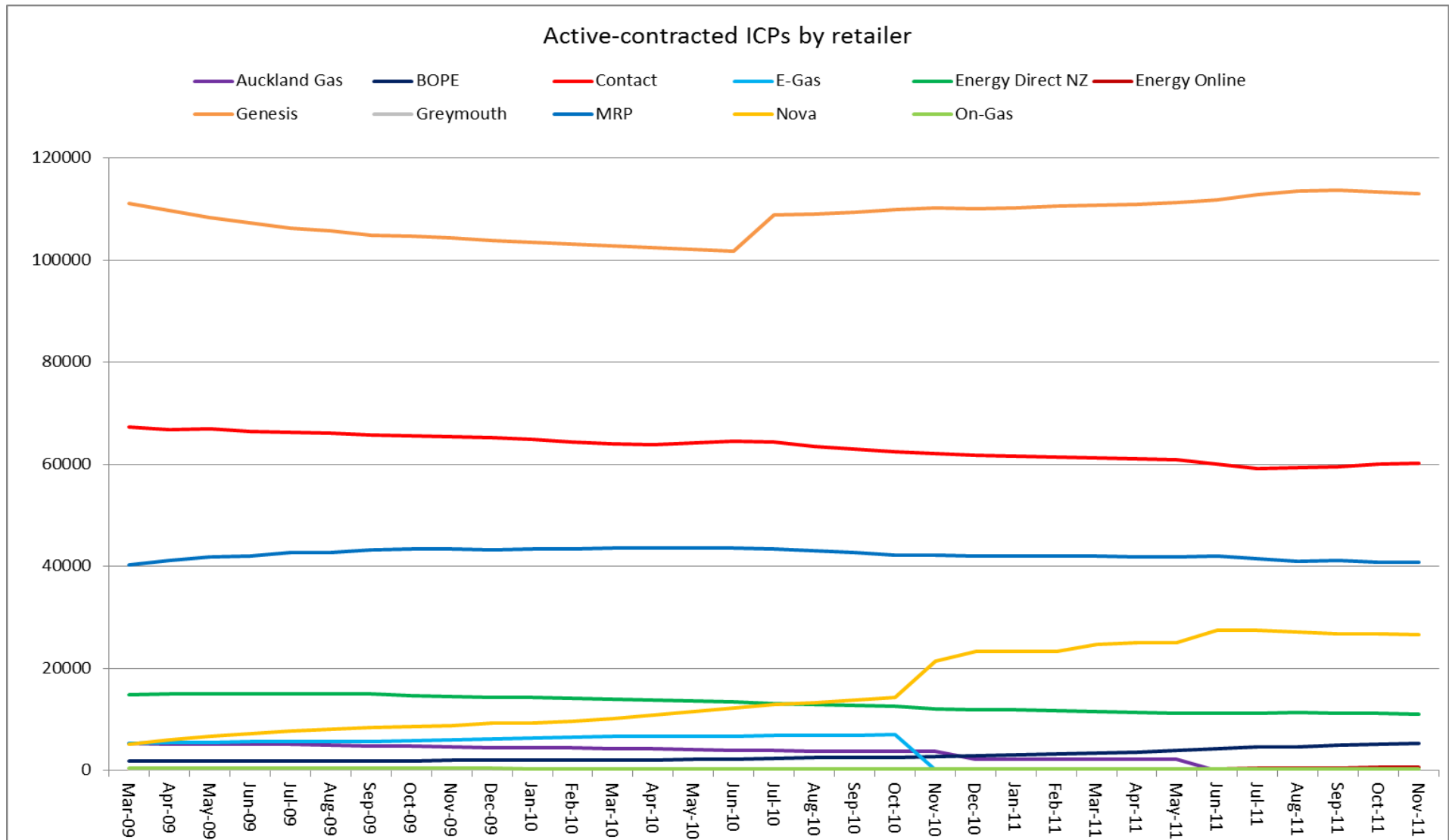
# Market shares – November 2011

The following charts show the distribution of active-contracted ICPs by retailer, distribution company and meter owner respectively.

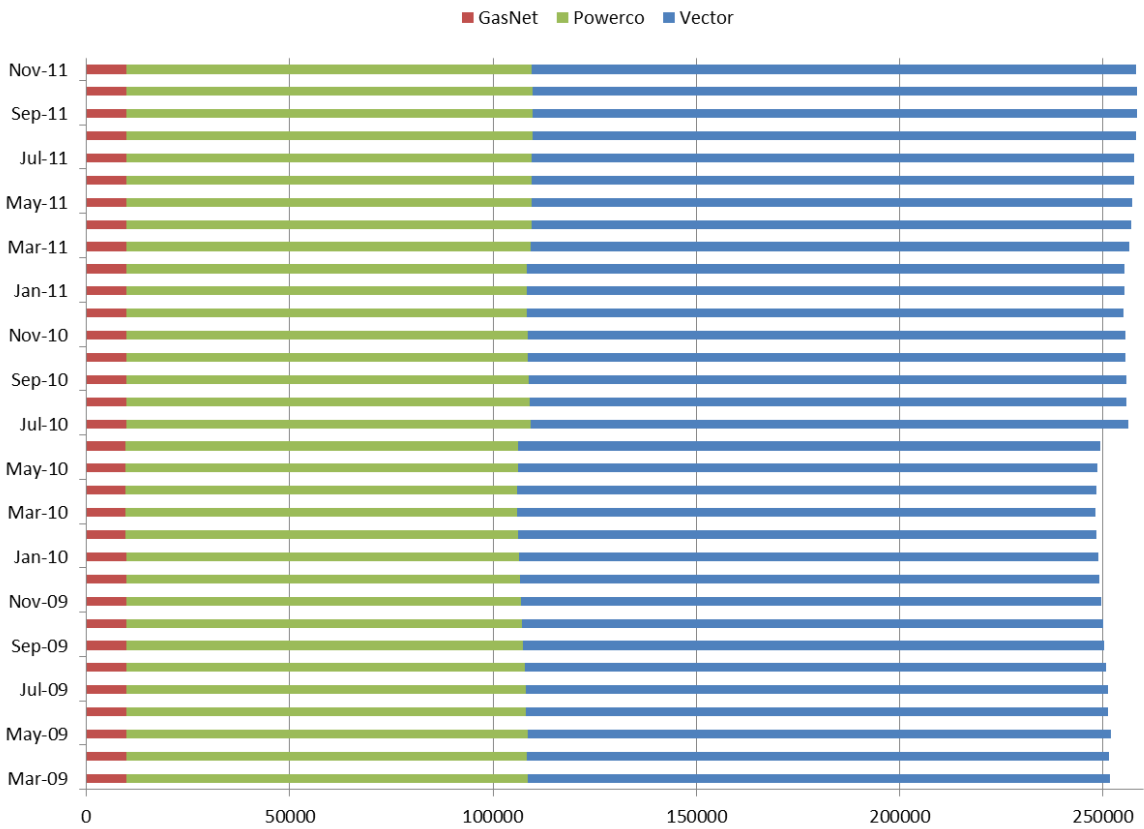




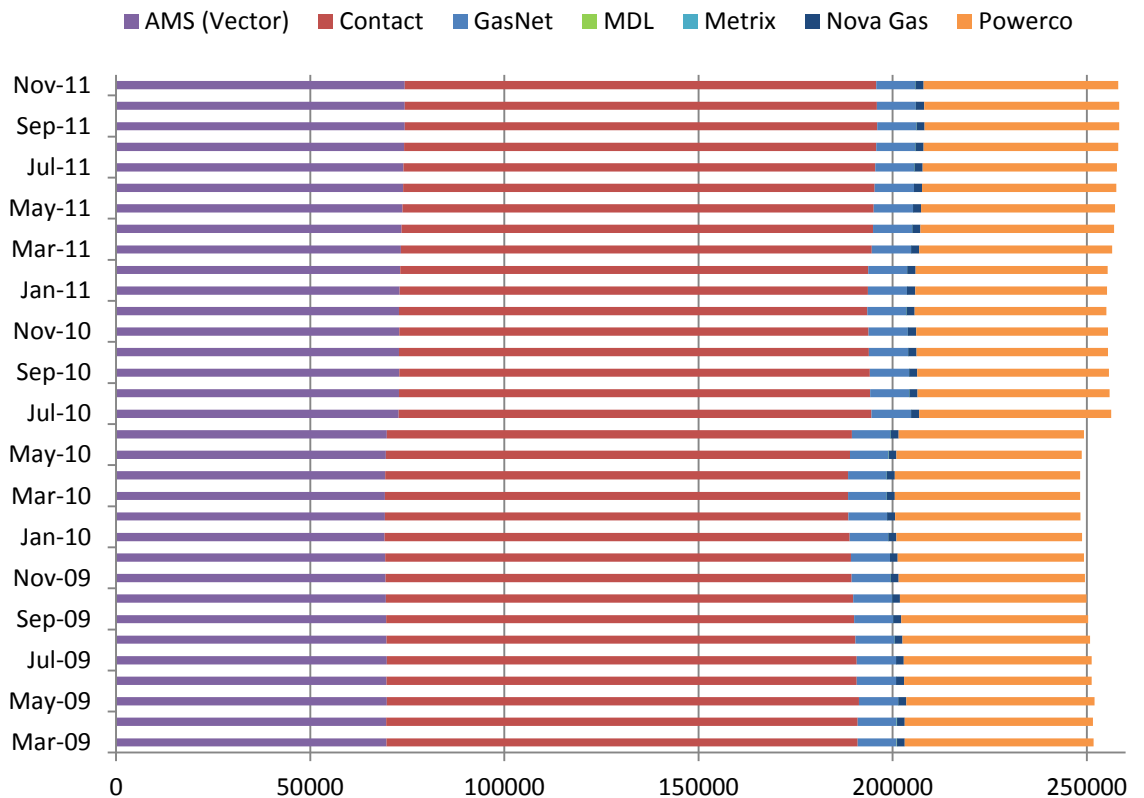
## Market shares – historical



### Active-contracted ICPs by distributor



### Active-contracted ICPs by meter owner



## **Active-contracted ICPs by gas gate and retailer – November 2011**

The following table shows the distribution of active-contracted ICPs by gas gate, and the distribution by retailer at each gas gate.

The responsible retailer codes are as follows:

BOPE—Bay of Plenty Energy

CTCT—Contact Energy

EDNZ—Energy Direct NZ (Wanganui Gas)

GEND—Genesis Energy (TOU)

GENG—Genesis Energy

GEOL—Energy Online

GMTH—Greymouth Gas

GNGC—OnGas (Vector)

GNVG—Nova Energy

MEEN—Mercury Energy (Mighty River Power)

The gas gate names associated with the codes used in the table can be found here:

[http://gasindustry.co.nz/sites/default/files/u14/All\\_Gas\\_Gates\\_301009.pdf](http://gasindustry.co.nz/sites/default/files/u14/All_Gas_Gates_301009.pdf)

Gas Gate	BOPE	CTCT	EDNZ	GEND	GENG	GEOL	GMTH	GNGC	GNVG	MEEN	Total
ALF15501								1			<b>1</b>
ASH34301		51	24		62				55	22	<b>214</b>
BAL08201							1				<b>1</b>
BAL09626							1				<b>1</b>
BEL24510		1715	263	2	17209	21		9	1737	1576	<b>22532</b>
BMC17901		514	4	1	412	3		4	208	638	<b>1784</b>
BRO36301								1			<b>1</b>
CAM17201		103			1511				43	164	<b>1821</b>
DAN05001		73			9			1	22		<b>105</b>
DRU15101		12			4			1	8	3	<b>28</b>
DRU15102		19			13			4	6	19	<b>61</b>
EGC30701		1									<b>1</b>
EGC30702	2	1			2				1		<b>6</b>
ELM12301	43	36	32		213			3	4		<b>331</b>
FLD03001		389	191	2	439			1	597	90	<b>1709</b>
FLH21901		2	3								<b>5</b>
FOX22101		159	8	1	21	8		1	89	8	<b>295</b>
GIS07810		892	239	3	1984			3	156		<b>3277</b>
GLB03401								1			<b>1</b>
HAR11801					1			4			<b>5</b>
HEN74101		7192	9	4	6251	92	1	15	1252	6472	<b>21288</b>
HPS02993				1							<b>1</b>
HRU16101				1	1				2		<b>4</b>
HST05210		2514	268	2	435	173		6	971		<b>4369</b>

Gas Gate	BOPE	CTCT	EDNZ	GEND	GENG	GEOL	GMTH	GNGC	GNVG	MEEN	Total
HTK08301		33	2		260				2	15	<b>312</b>
HTL16601		3		1	91			3	5	3	<b>106</b>
HTV11301	17	1854	4	3	22318			51	485	2010	<b>26742</b>
HUN15301			1					2	1		<b>4</b>
HWA20801	137	431	310		1811			4	55	7	<b>2755</b>
IGW11901	138	43	65		298				9	15	<b>568</b>
KAP12901		2			2						<b>4</b>
KAW04405	132	7	1		105				5		<b>250</b>
KAW04410								1			<b>1</b>
KAW04411								1			<b>1</b>
KIG16801		4							1	1	<b>6</b>
KIH19101		51	1	1	1226				36	37	<b>1352</b>
KIN02601		1			3			2		1	<b>7</b>
KIN04310								1			<b>1</b>
KIW34201							1				<b>1</b>
KIW34202					1			1			<b>2</b>
KKI23701		2							1		<b>3</b>
KPA12401	4	6	5		44						<b>59</b>
KRG24101		1	1						2		<b>4</b>
KTK23901								1			<b>1</b>
KUK22401		5			19				4		<b>28</b>
KUR33601								1			<b>1</b>
LAB20201		9	61		41				6		<b>117</b>
LCF20010		1									<b>1</b>

Gas Gate	BOPE	CTCT	EDNZ	GEND	GENG	GEOL	GMTH	GNGC	GNVG	MEEN	Total
LNB24301		68	27	1	103			4	78	17	<b>298</b>
LVN24401		1619	96		358	111		5	591	69	<b>2849</b>
MGK05401							1				<b>1</b>
MMU08001	428	166	2	4	3135		1	3	145	312	<b>4196</b>
MNA23402	13	33	34		153				4		<b>237</b>
MNG34001								1			<b>1</b>
MRV16301		1									<b>1</b>
MRV16302		49			552				23	65	<b>689</b>
MSD01801				1							<b>1</b>
MSD01802								1			<b>1</b>
MTG17301		2			31					2	<b>35</b>
MTN23801		56	226		150	1		2	14	1	<b>450</b>
MTP20601		1			5						<b>6</b>
MUT19001								1			<b>1</b>
NGW14501		11			133				2	4	<b>150</b>
NPL12101	2587	779	1246	2	5810	5		6	196	237	<b>10868</b>
NPS00530		1									<b>1</b>
OAK18601					1						<b>1</b>
OKA13201	4	5	6		39				1	4	<b>59</b>
OKS32801									1	1	<b>2</b>
OKU16701	47	20	34		120				2	8	<b>231</b>
OPK13001	14	21	16		126						<b>177</b>
OPO32001	49	4		1	54				3		<b>111</b>
ORD24701		1	1						1		<b>3</b>

Gas Gate	BOPE	CTCT	EDNZ	GEND	GENG	GEOL	GMTH	GNGC	GNVG	MEEN	Total
OTA22601		56	5		291				24	5	<b>381</b>
OTB00301		1									<b>1</b>
OTO14101		4			161				15		<b>180</b>
PAH23101					21						<b>21</b>
PAH23201					1				1		<b>2</b>
PAP06604		43		1	31				6	54	<b>135</b>
PAP06610		4286	7	3	867	12	1	54	696	3215	<b>9141</b>
PAU20101		562	55		2380			2	191	72	<b>3262</b>
PGH15901		1									<b>1</b>
PGU13101					14						<b>14</b>
PHT04901		39			37			1	11		<b>88</b>
PIR31101		2			44					3	<b>49</b>
PLN24201		3191	1131	1	3907	20		20	5889	817	<b>14976</b>
PPA33201	1	2			13				1	1	<b>18</b>
PTA20901	15	15	23		130			2	3		<b>188</b>
PTR32601	4	14	1		295			1	15	12	<b>342</b>
PUK04201		68		1	22	2			40	51	<b>184</b>
PYE36601	2	1			1					1	<b>5</b>
RAG33401									1		<b>1</b>
RAM15201		1						2			<b>3</b>
ROT08101	291	314	1		2669			12	208	404	<b>3899</b>
RPR30801	1	2			19				1	1	<b>24</b>
STR10201	140	63	59	1	614				20		<b>897</b>
TAC31001								1			<b>1</b>

Gas Gate	BOPE	CTCT	EDNZ	GEND	GENG	GEOL	GMTH	GNGC	GNVG	MEEN	Total
TAT16401							1				1
TAU07001	129	311	3		1306			1	154	144	2048
TAW31004		1			3				1		5
TCC00201		1									1
THO22701		2			11				2		15
TIR33501		1									1
TIR33502	2	3			53				11	3	72
TKN17001		1			141			1	9		152
TKP05101									1		1
TKR19701	4	61	2		866			1	51	35	1020
TKS17401		2	1		17		1	1	1		23
TPK33301	29	10	1	1	520				24	25	610
TRC02003		1									1
TRG07701	611	155	3		3117			6	219	257	4368
TTK30601	1	1			3						5
TUK06501		5			1	1		2	2	1	12
TWA35610		8088	446	8	10588	32		27	6975	2403	28567
WAG21501		500	5837		2716	6	2	2	147	25	9235
WAK22801		211	23		1175				64	9	1482
WEL18301		2			19				3	2	26
WHG07501		106	3		916			6	98	86	1215
WHK32101	236	12			147			3	34	11	443
WKE19201								1			1
WRK18901		35			143			1	17	56	252

<b>Gas Gate</b>	<b>BOPE</b>	<b>CTCT</b>	<b>EDNZ</b>	<b>GEND</b>	<b>GENG</b>	<b>GEOL</b>	<b>GMTH</b>	<b>GNGC</b>	<b>GNVG</b>	<b>MEEN</b>	<b>Total</b>
WST03610		21929	18	8	7451	96	14	71	4333	20077	<b>53997</b>
WTA16501		1	1		38		1		3	1	<b>45</b>
WTG06910		553	97	1	4590	10		3	390	460	<b>6104</b>
WTK33901		408			1315				45	630	<b>2398</b>
WTK33902		158			209	2			45	146	<b>560</b>
WTR12001	288	65	144		550	1		2	27	39	<b>1116</b>
WTT20301								1			<b>1</b>
WVY23601		2		1	4						<b>7</b>
<b>Grand Total</b>	<b>5369</b>	<b>60253</b>	<b>11041</b>	<b>57</b>	<b>112972</b>	<b>596</b>	<b>26</b>	<b>370</b>	<b>26602</b>	<b>40847</b>	<b>258133</b>