

# Gas Registry statistics – February 2011

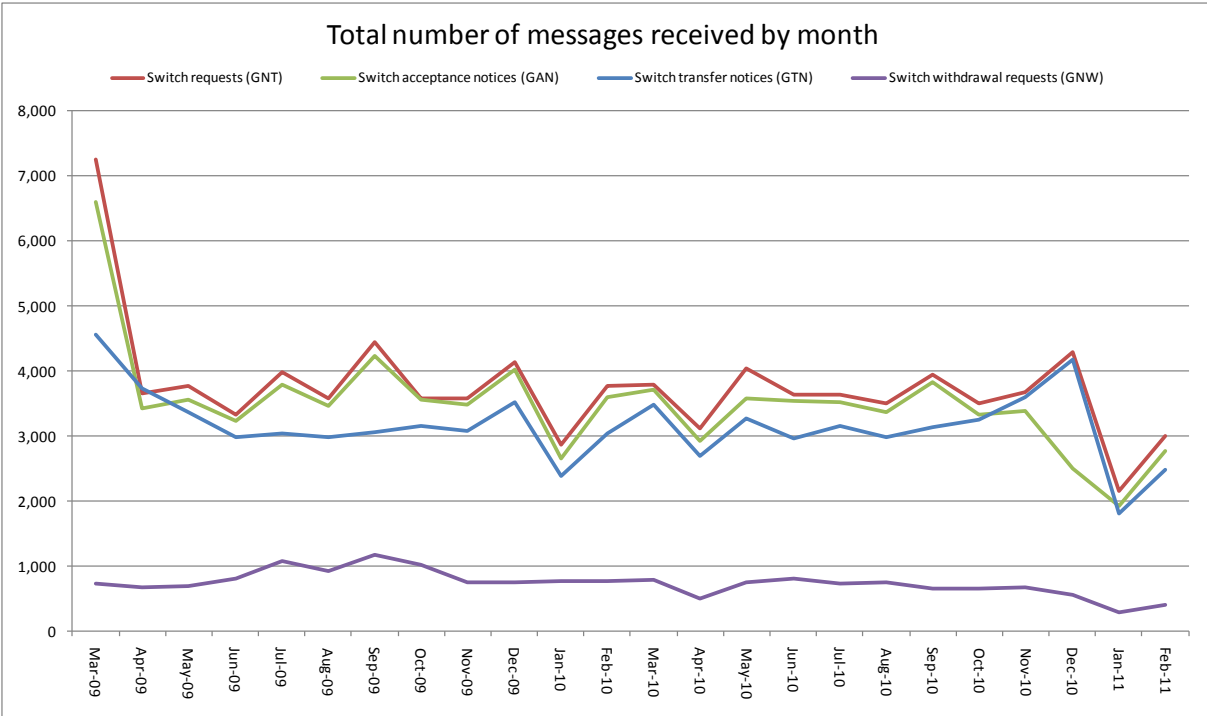
The following report provides statistics and charts illustrating gas registry usage, switching volumes and breakdowns of retailer, distributor and meter owner market shares. The information is provided in accordance with version 1.2 of the Determinations by the Industry Body (Gas Industry Co) under the Gas (Switching Arrangements) Rules 2008, dated 20 February 2009.

## Summary registry statistics – February 2011

ICP enquiries processed in month (Online)	25,554
ICP enquiries processed in month (Offline)	9,880,198
<b>Total ICP enquiries processed in month</b>	<b>9,905,752</b>
ICPs added to the Registry in month	366
ICPs changed in month	1,570
ICPs decommissioned in month	192
Valid standard switch requests (GNT-S) received in month	1,340
Valid move switch requests (GNT-SM) received in month	1,655
<b>Valid switch requests (GNT) received in month</b>	<b>2,995</b>
Valid switch acceptance notices (GAN) received in month	2,764
<b>Valid switch transfer notices (GTN) received in month</b>	<b>2,487</b>
Valid switch withdrawal requests (GNW) received in month	408
Valid switch withdrawal acceptances (GAW-A) received in month	374
Valid switch withdrawal rejections (GAW-R) received in month	18
Valid switch reading renegotiation requests (GNC) received in month	90
Valid switch reading renegotiation acceptances (GAC-A) received in month	89
Valid switch reading renegotiation rejections (GAC-R) received in month	1

Note: A switch transfer notice (GTN) is the last stage required to complete the switching process. This statistic indicates the number of switches completed in the month.

# Switching activity – historical



## ICPs by status – February 2011

The meaning of the ICP status codes are as follows:

ACTC—Active contracted (gas is able to flow and the customer has a contract with a retailer)

ACTV—Active vacant (gas is able to flow and the premises is vacant)

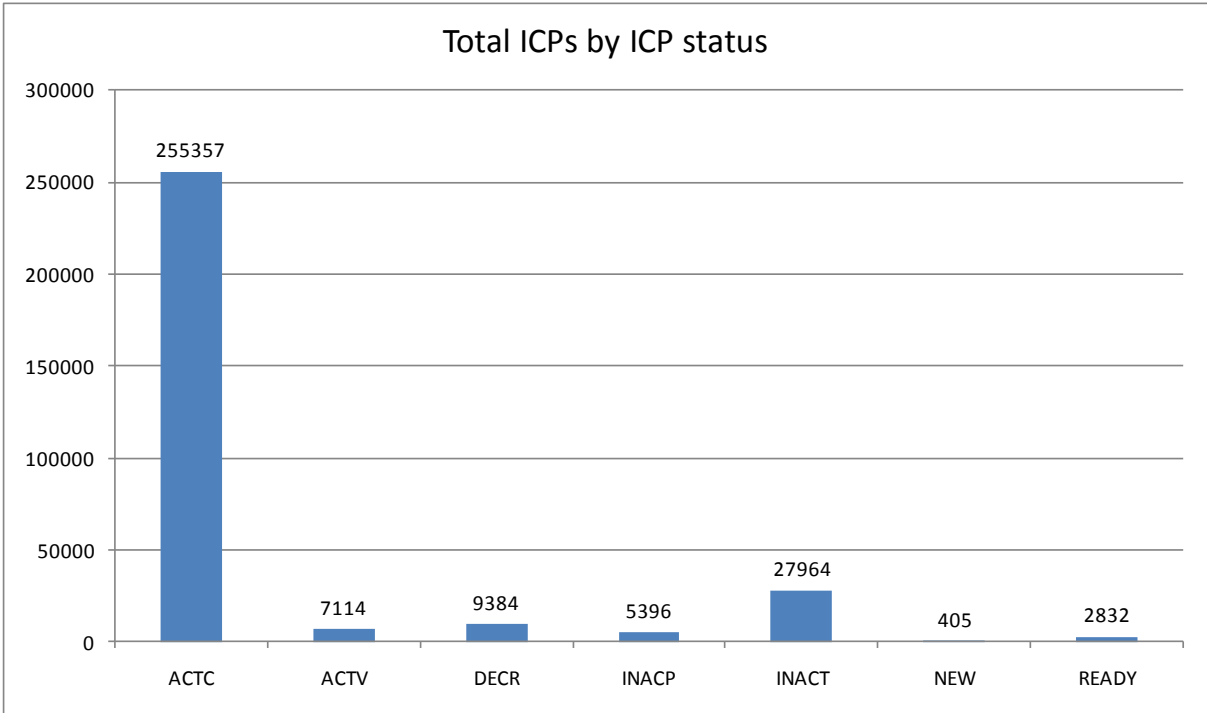
DECR—Decommissioned

INACP—Inactive permanent (gas unable to flow due to a permanent disconnection)

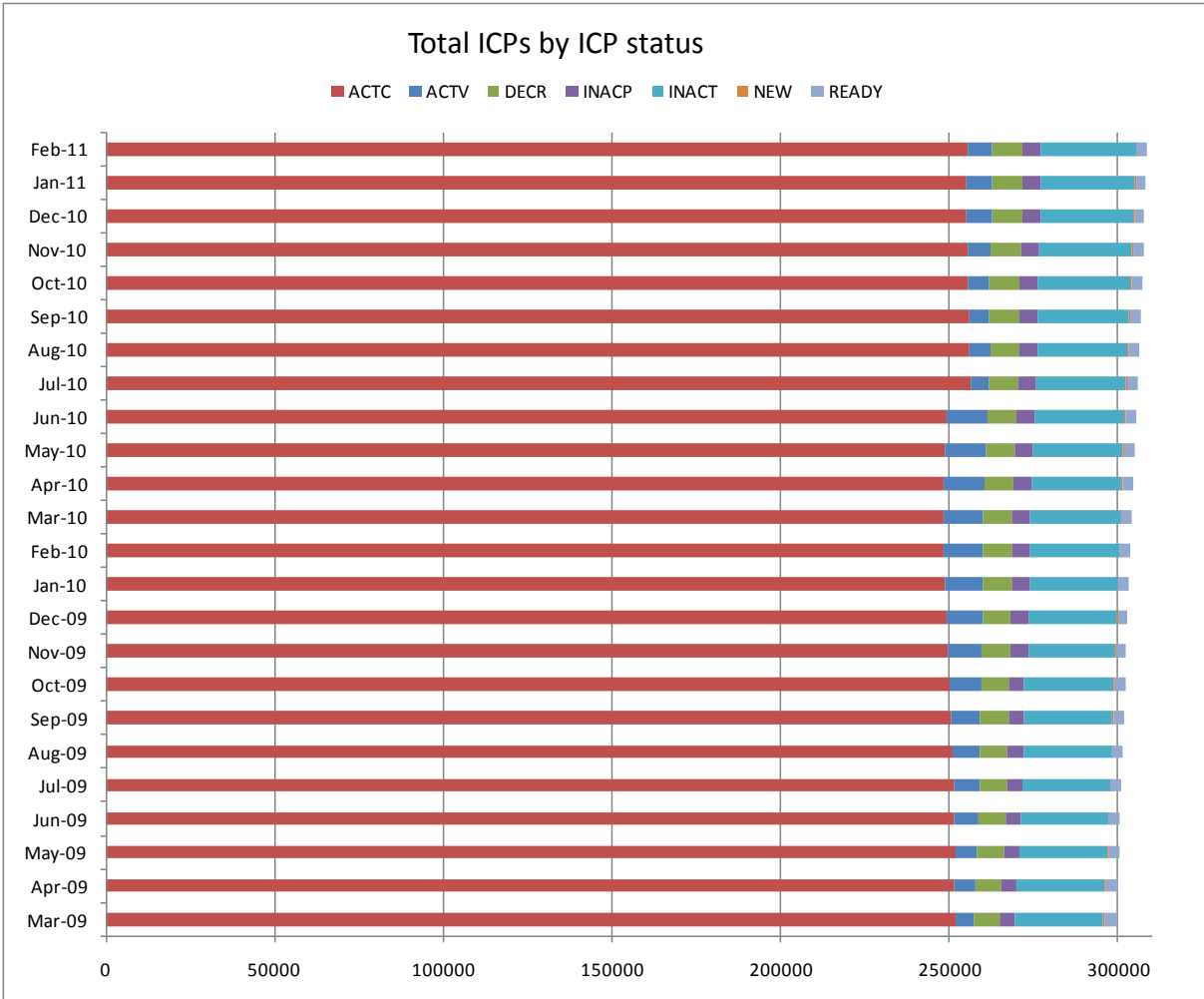
INACT—Gas unable to flow due to a temporary disconnection

NEW—Newly created ICP, gas not yet able to flow

READY—New ICP, gas able to flow, awaiting uplift by retailer

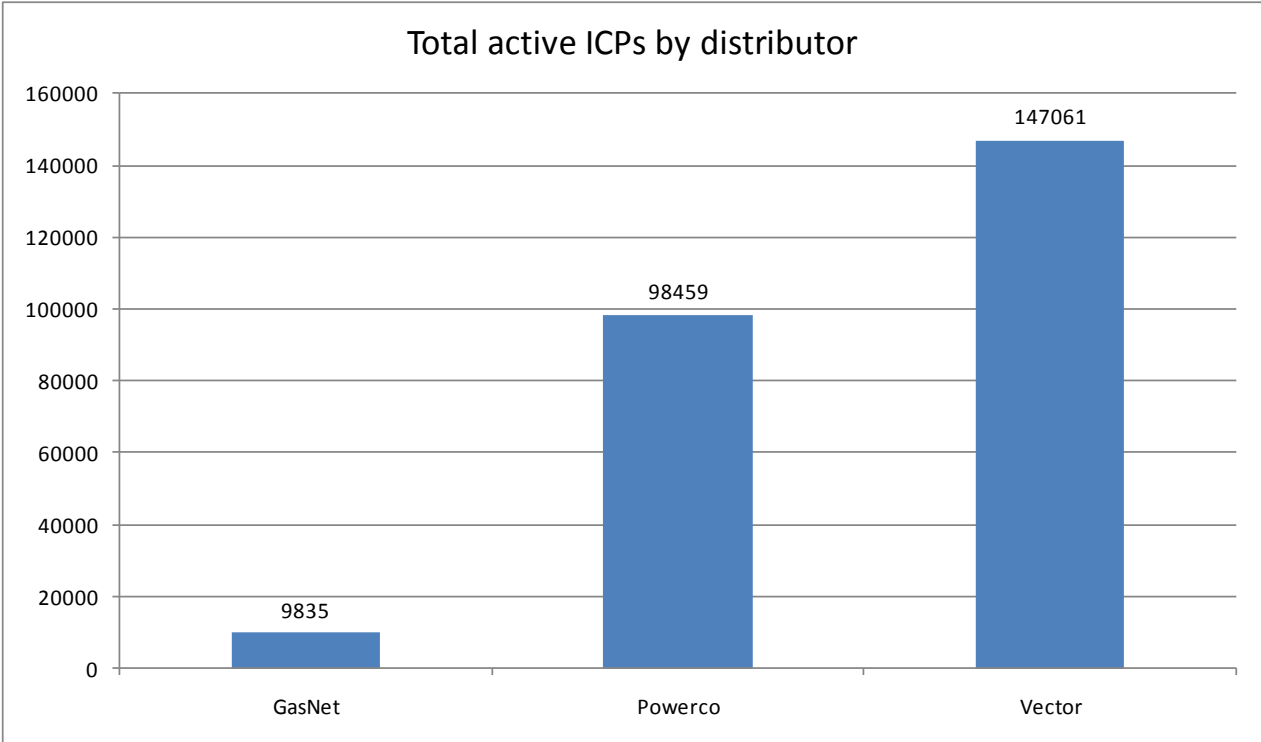
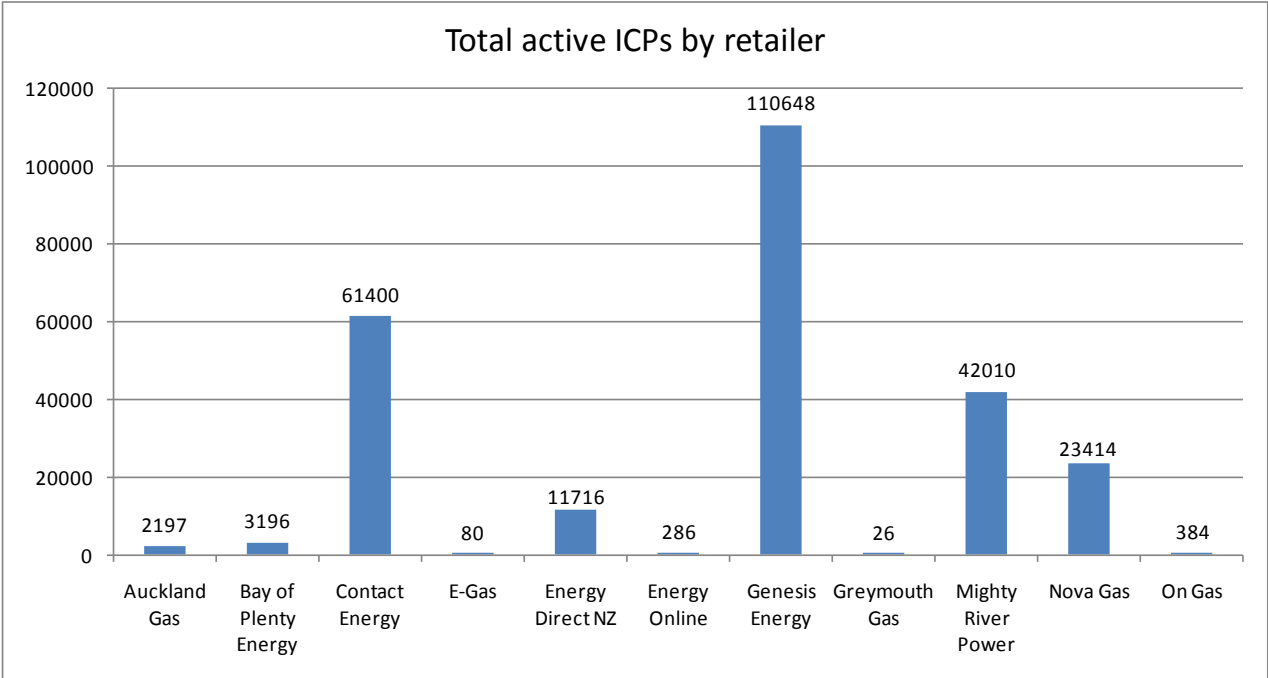


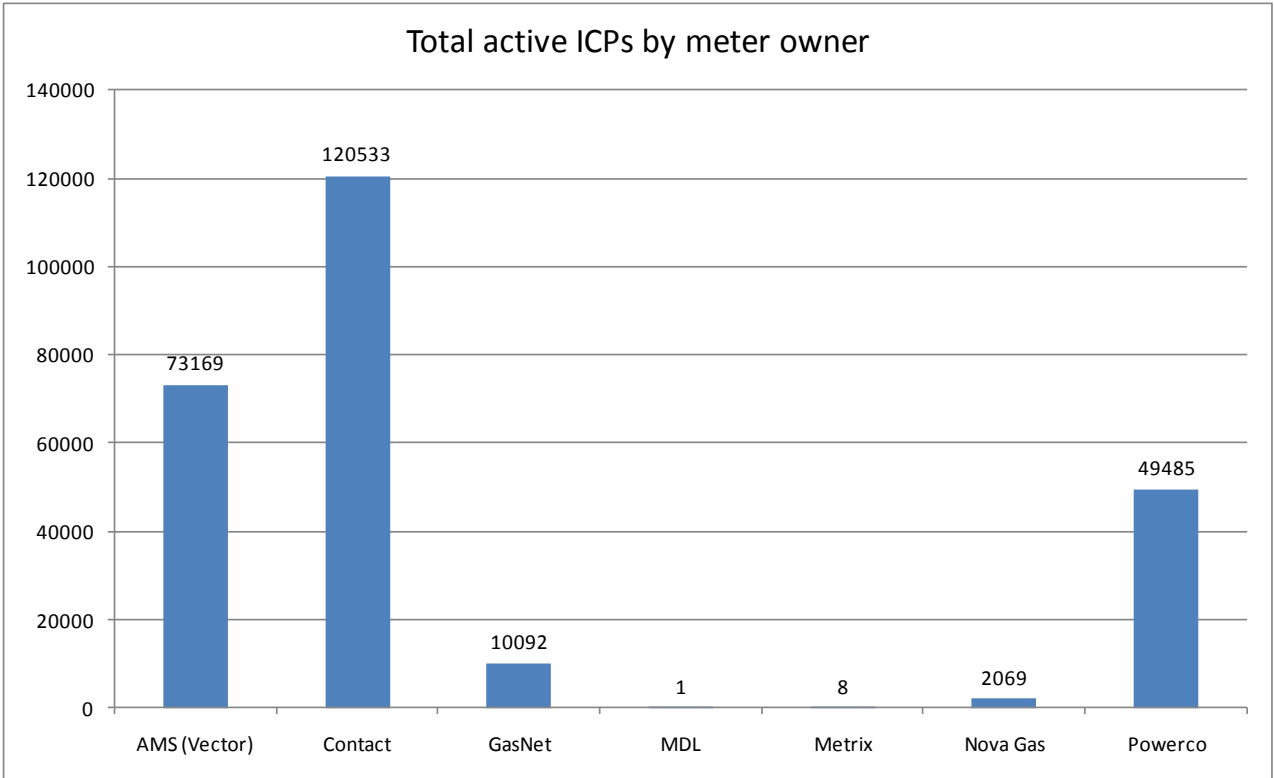
### ICPs by status – historical



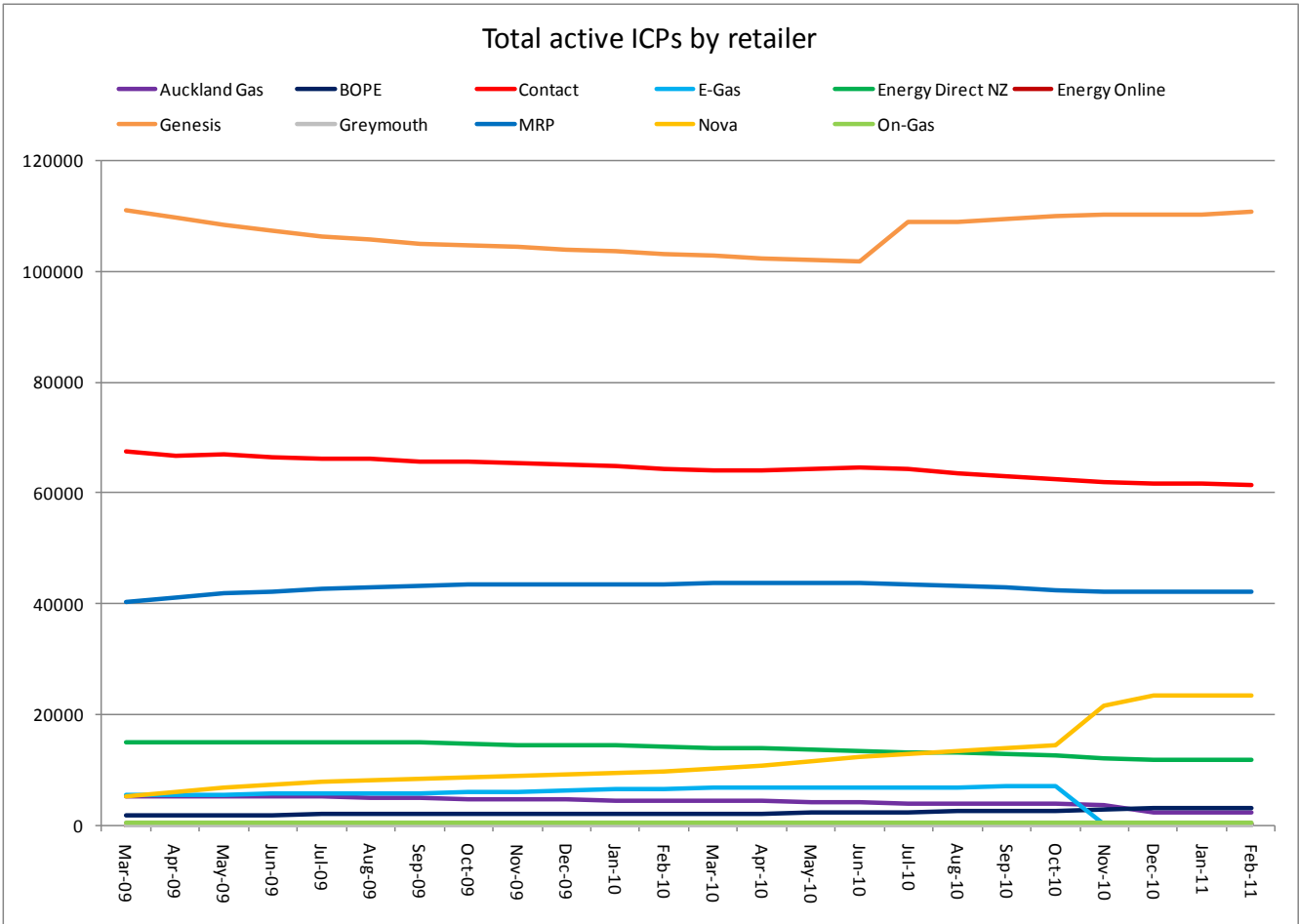
# Market shares – February 2011

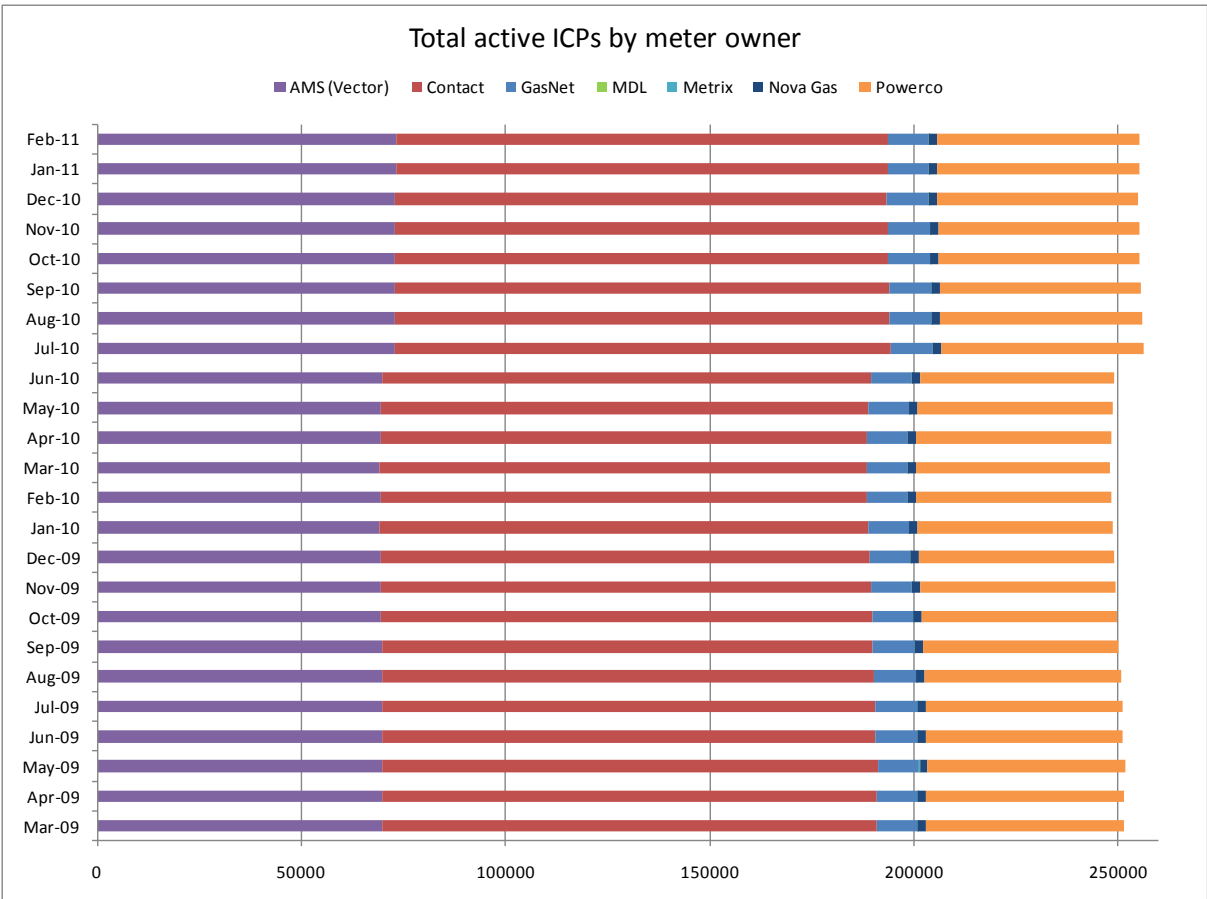
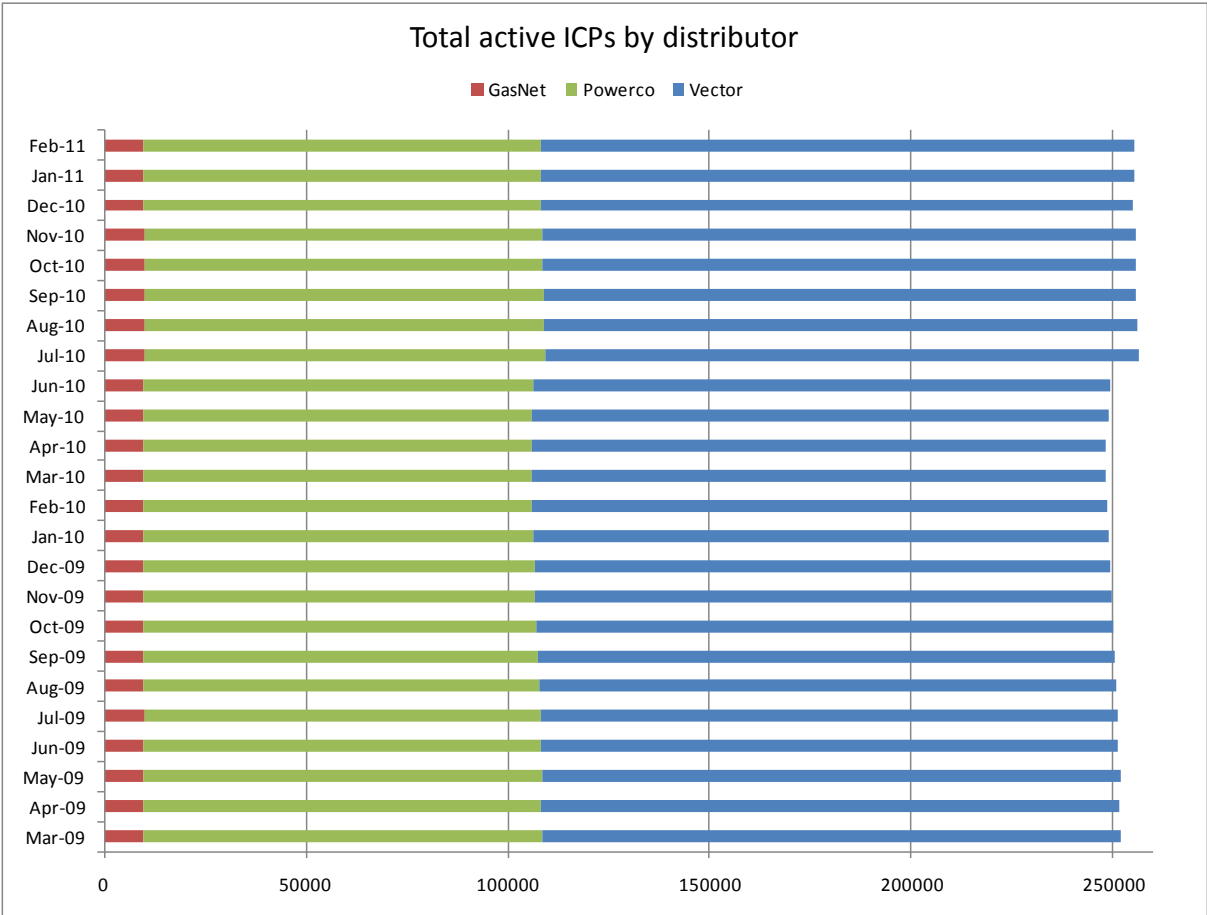
The following charts show the distribution of active-contracted ICPs by retailer, distribution company and meter owner respectively.





### Market shares – historical





## **Active ICPs by gas gate and responsible retailer – February 2011**

The following table shows the distribution of active ICPs by gas gate, and the distribution by retailer at each gas gate.

The responsible retailer codes are as follows:

AGCL—Auckland Gas Company

BOPE—Bay of Plenty Energy

CTCT—Contact Energy

EGAS—E-Gas 2000

EGLT—E-Gas Ltd

EDNZ—Energy Direct NZ (Wanganui Gas)

GENG—Genesis Energy

GEND—Genesis Energy

GEOL—Energy Online

GMTH—Greymouth Gas

MEEN—Mighty River Power

GNVG—Nova Gas

GNGC—OnGas (Vector)

Gas Gate	AGCL	BOPE	CTCT	EDNZ	EGAS	EGLT	GEND	GENG	GEOL	GMTH	GNGC	GNVG	MEEN	Total
ALF15501											1			<b>1</b>
ASH34301			54	31				55				60	8	<b>208</b>
BAL08201										1				<b>1</b>
BAL09626										1				<b>1</b>
BEL24510			1690	36	1	1	2	17359	5		10	1831	1508	<b>22443</b>
BMC17901	68		449	2			1	350	1		4	153	700	<b>1728</b>
BRO36301											1			<b>1</b>
CAM17201			67					1487				46	172	<b>1772</b>
DAN05001			75			1		10			1	22		<b>109</b>
DRU15101			13					2			2	8	3	<b>28</b>
DRU15102			6					9			4	5	5	<b>29</b>
EGC30701			1											<b>1</b>
EGC30702		2	1					3				1		<b>7</b>
ELM12301		9	49	37				237			3	5		<b>340</b>
FLD03001			424	213			2	428			1	607	30	<b>1705</b>
FLH21901			1	3				2						<b>6</b>
FOX22101			218	11			1	23	5		1	25	15	<b>299</b>
GIS07810			836	228		3	3	2066			3	159		<b>3298</b>
GLB03401											1			<b>1</b>
HAR11801								1			4			<b>5</b>
HEN74101	478		7140	4	1	8	4	5396	15	1	16	797	7018	<b>20878</b>
HPS02993							1							<b>1</b>
HRU16101							1	1				2		<b>4</b>

Gas Gate	AGCL	BOPE	CTCT	EDNZ	EGAS	EGLT	GEND	GENG	GEOL	GMTH	GNGC	GNVG	MEEN	Total
HST05210			3089	299		2	2	377	145		6	440		<b>4360</b>
HTK08301			3					18					3	<b>24</b>
HTL16601			4				1	103			3	5	4	<b>120</b>
HTV11301	1	11	1520			7	3	22631			50	507	2191	<b>26921</b>
HUN15301	1			1							2			<b>4</b>
HWA20801		71	444	330		2		1868			4	68		<b>2787</b>
IGW11901		32	84	105				331				12		<b>564</b>
KAP12901			2					2						<b>4</b>
KAW04405		130	7	1				109				5		<b>252</b>
KAW04410											1			<b>1</b>
KAW04411											1			<b>1</b>
KIG16801			4									1	1	<b>6</b>
KIH19101			41			2	1	1230			1	38	44	<b>1357</b>
KIN02601								4			2		1	<b>7</b>
KIN04310											1			<b>1</b>
KIW34201										1				<b>1</b>
KIW34202								1			1			<b>2</b>
KKI23701			2									1		<b>3</b>
KPA12401		3	3	5				49						<b>60</b>
KRG24101			1	1								2		<b>4</b>
KTK23901											1			<b>1</b>
KUK22401			6					18				4		<b>28</b>
KUR33601											1			<b>1</b>

Gas Gate	AGCL	BOPE	CTCT	EDNZ	EGAS	EGLT	GEND	GENG	GEOL	GMTH	GNGC	GNVG	MEEN	Total
LAB20201			8	64				38				6	1	<b>117</b>
LCF20010			1											<b>1</b>
LNB24301			56	29			1	97			4	86	10	<b>283</b>
LVN24401			2061	125		1		299	73		5	193	93	<b>2850</b>
MGK05401										1				<b>1</b>
MMU08001	1	422	116			2	4	3133		1	3	144	327	<b>4153</b>
MNA23402			39	33				172				4		<b>248</b>
MRV16301			1					1						<b>2</b>
MRV16302			34			1		550				23	76	<b>684</b>
MSD01801			1											<b>1</b>
MSD01802											1			<b>1</b>
MTG17301			1					32					1	<b>34</b>
MTN23801			57	246				142	1		2	12		<b>460</b>
MTP20601								5						<b>5</b>
MUT19001											1			<b>1</b>
NGW14501			12					136				2	6	<b>156</b>
NPL12101		1133	1066	1925		2	1	6387	1		6	251		<b>10772</b>
NPS00530			1											<b>1</b>
OAK18601								1						<b>1</b>
OKA13201		2	8	7				40				1		<b>58</b>
OKS32801												1	1	<b>2</b>
OKU16701		10	34	50				127				2		<b>223</b>
OPK13001		5	29	15				127						<b>176</b>

Gas Gate	AGCL	BOPE	CTCT	EDNZ	EGAS	EGLT	GEND	GENG	GEOL	GMTH	GNGC	GNVG	MEEN	Total
OPO32001		50	4				1	52				3		<b>110</b>
ORD24701			1	1								1		<b>3</b>
OTA22601			50	3		2		293				26	6	<b>380</b>
OTB00301			1											<b>1</b>
OTO14101			4					160				15		<b>179</b>
PAH23101								14						<b>14</b>
PAH23201								1				1		<b>2</b>
PAP06603	1		32				1	18				7	55	<b>114</b>
PAP06610	170		4316	5	1	3	3	713	2	1	57	493	3293	<b>9057</b>
PAU20101			512	46		1		2394			2	190	90	<b>3235</b>
PGH15901			1											<b>1</b>
PGU13101								14						<b>14</b>
PHT04901			42					36			1	11		<b>90</b>
PIR31101								44					4	<b>48</b>
PLN24201			3561	1300		3	1	3887	8		21	5695	272	<b>14748</b>
PPA33201			1					7						<b>8</b>
PTA20901		13	14	23				135			2	3		<b>190</b>
PTR32601		3	11					296			1	19	13	<b>343</b>
PUK04201	6		64				1	20	1			29	54	<b>175</b>
RAG33401												1		<b>1</b>
RAM15201			1								2			<b>3</b>
ROT08101		264	270			4		2700			12	217	414	<b>3881</b>
RPR30801			2					21				1	1	<b>25</b>

Gas Gate	AGCL	BOPE	CTCT	EDNZ	EGAS	EGLT	GEND	GENG	GEOL	GMTH	GNGC	GNVG	MEEN	Total
STR10201		20	98	96			1	656				25		<b>896</b>
TAC31001											1			<b>1</b>
TAT16401										1				<b>1</b>
TAU07001		103	241	2		2		1353			1	160	167	<b>2029</b>
TCC00201			1											<b>1</b>
THO22701			2					11				2		<b>15</b>
TIR33501			1											<b>1</b>
TIR33502		2	2			1		52				11	6	<b>74</b>
TKN17001			1					143			1	9		<b>154</b>
TKP05101												1		<b>1</b>
TKR19701		4	44					877			1	53	40	<b>1019</b>
TKS17401			1					16		1	2	1		<b>21</b>
TPK33301		27	5				1	537				26	24	<b>620</b>
TRC02003			1											<b>1</b>
TRG07701		586	132	3		2		3086			6	224	266	<b>4305</b>
TTK30601		2						4						<b>6</b>
TUK06501	1		6					1			2	1	1	<b>12</b>
TWA35610			8334	75		5	7	9764	14		31	7176	2430	<b>27836</b>
WAG21501			447	6020		2		2628		2	2	150		<b>9251</b>
WAK22801			182	21		1		1190				66	13	<b>1473</b>
WEL18301			2					19				3	1	<b>25</b>
WHG07501			82	2				945			5	100	85	<b>1219</b>
WHK32101		244	7			2		148			3	37	8	<b>449</b>

Gas Gate	AGCL	BOPE	CTCT	EDNZ	EGAS	EGLT	GEND	GENG	GEOL	GMTH	GNGC	GNVG	MEEN	Total
WKE19201											1			<b>1</b>
WRK18901			21					152			2	15	66	<b>256</b>
WST03610	1442		22089	10	1	11	8	6016	12	14	74	2638	21057	<b>53372</b>
WTA16501						1		38		1		3	1	<b>44</b>
WTG06910			535	12		2	1	4549	3		3	392	540	<b>6037</b>
WTK33901	7		273				1	1326				30	700	<b>2337</b>
WTK33902	21		126			1		192				22	185	<b>547</b>
WTR12001		48	119	296		1		624			2	28		<b>1118</b>
WTT20301											1			<b>1</b>
WVY23601			2				1	4						<b>7</b>
<b>Total</b>	<b>2197</b>	<b>3196</b>	<b>61400</b>	<b>11716</b>	<b>4</b>	<b>76</b>	<b>55</b>	<b>110593</b>	<b>286</b>	<b>26</b>	<b>384</b>	<b>23414</b>	<b>42010</b>	<b>255357</b>