

Gas Registry statistics – September 2010

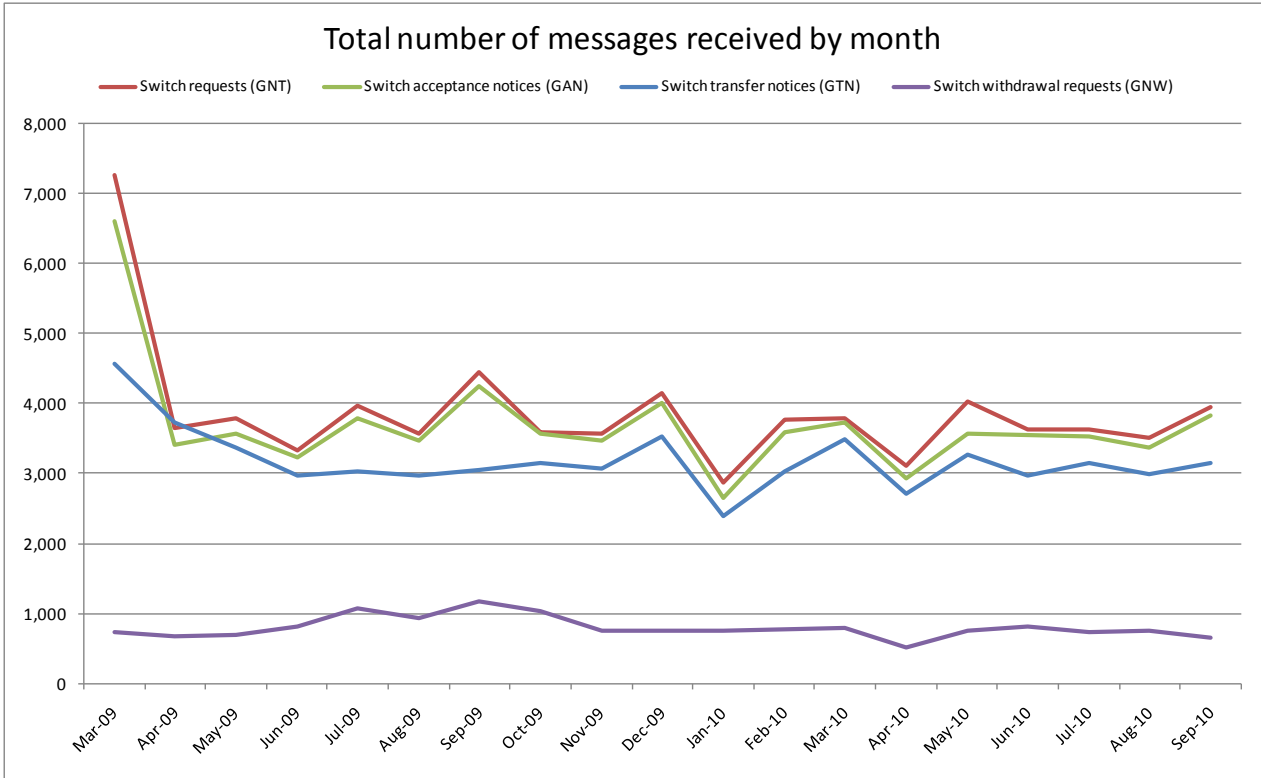
The following report provides statistics and charts illustrating gas registry usage, switching volumes and breakdowns of retailer, distributor and meter owner market shares. The information is provided in accordance with version 1.2 of the Determinations by the Industry Body (Gas Industry Co) under the Gas (Switching Arrangements) Rules 2008, dated 20 February 2009.

Summary registry statistics – September 2010

ICP enquiries processed in month (Online)	27,385
ICP enquiries processed in month (Offline)	5,749,933
Total ICP enquiries processed in month	5,777,318
ICPs added to the Registry in month	440
ICPs changed in month	1,373
ICPs decommissioned in month	31
Valid standard switch requests (GNT-S) received in month	2,599
Valid move switch requests (GNT-SM) received in month	1,353
Valid switch requests (GNT) received in month	3,952
Valid switch acceptance notices (GAN) received in month	3,828
Valid switch transfer notices (GTN) received in month	3,142
Valid switch withdrawal requests (GNW) received in month	654
Valid switch withdrawal acceptances (GAW-A) received in month	621
Valid switch withdrawal rejections (GAW-R) received in month	34
Valid switch reading renegotiation requests (GNC) received in month	44
Valid switch reading renegotiation acceptances (GAC-A) received in month	42
Valid switch reading renegotiation rejections (GAC-R) received in month	2

Note: A switch transfer notice (GTN) is the last stage required to complete the switching process. This statistic indicates the number of switches completed in the month.

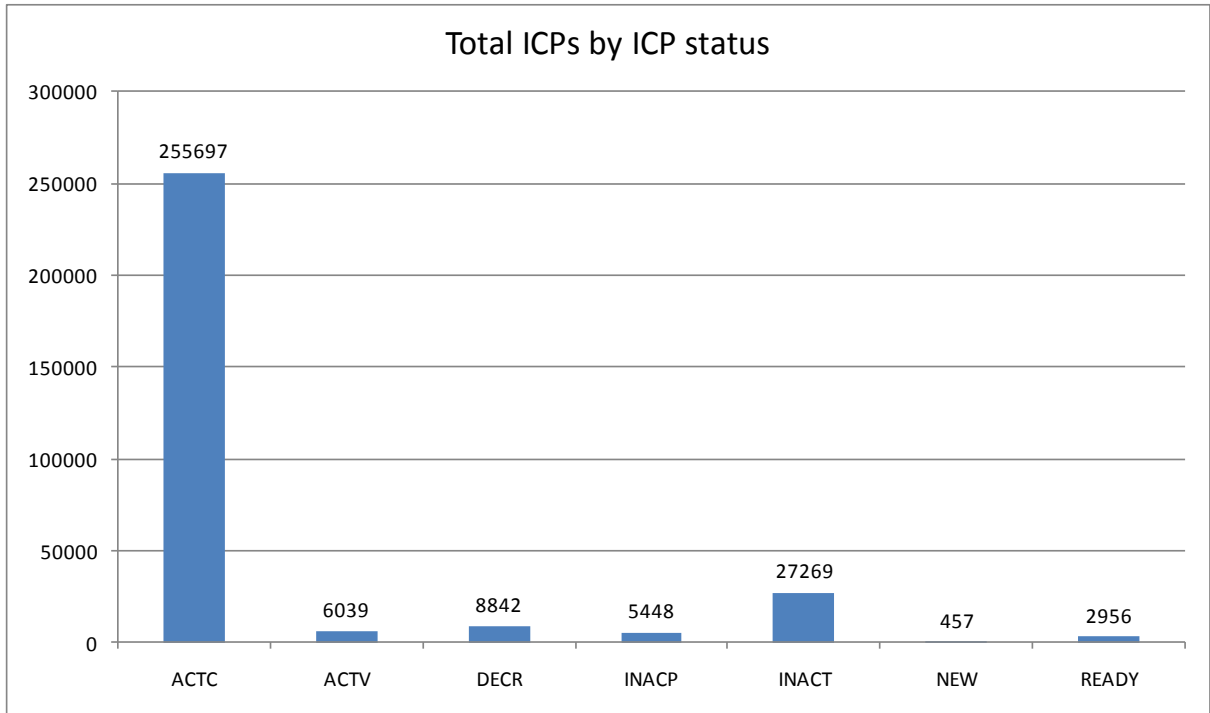
Switching activity – historical



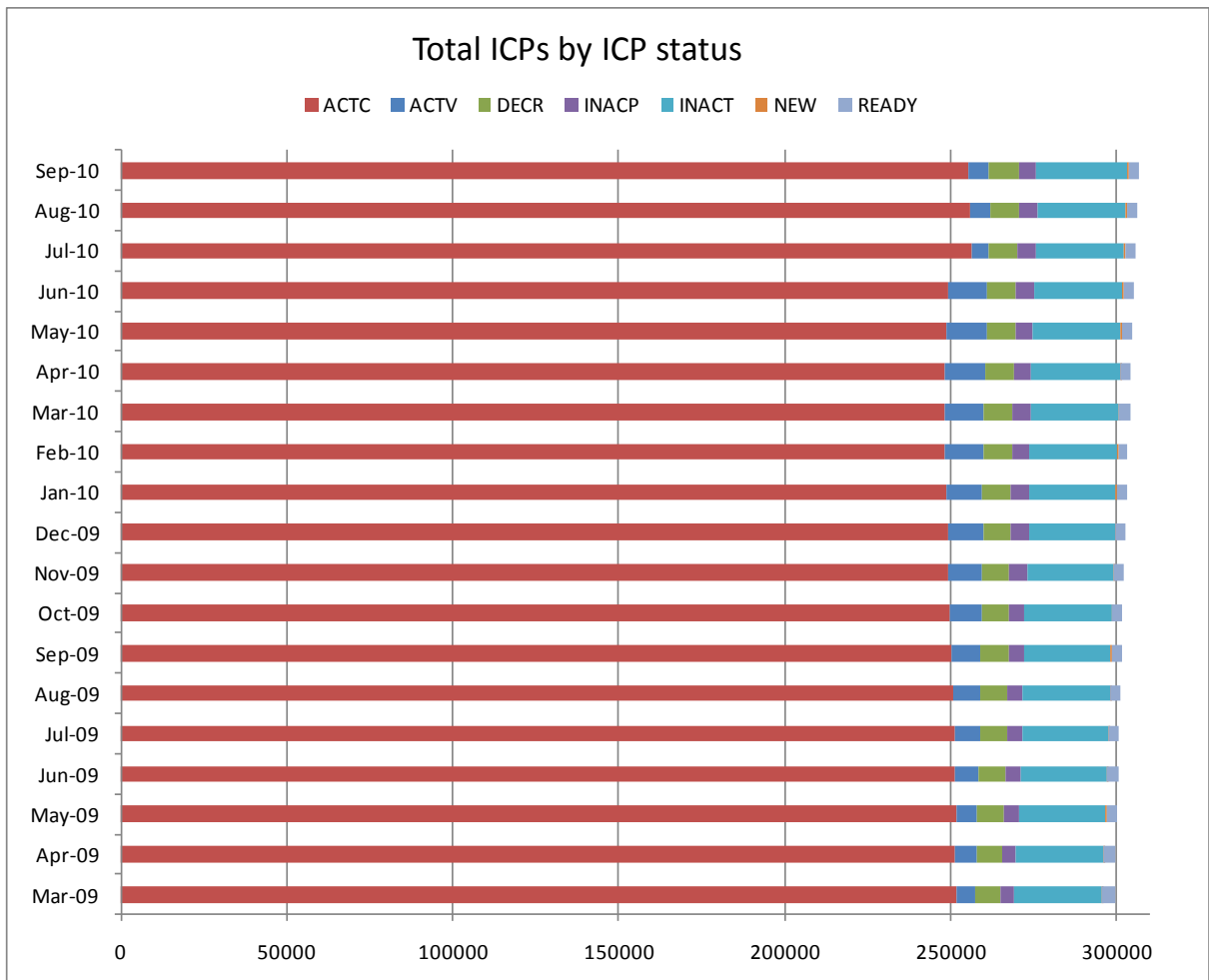
ICPs by status – September 2010

The meaning of the ICP status codes are as follows:

- ACTC—Active contracted (gas is able to flow and the customer has a contract with a retailer)
- ACTV—Active vacant (gas is able to flow and the premises is vacant)
- DECR—Decommissioned
- INACP—Inactive permanent (gas unable to flow due to a permanent disconnection)
- INACT—Gas unable to flow due to a temporary disconnection
- NEW—Newly created ICP, gas not yet able to flow
- READY—New ICP, gas able to flow, awaiting uplift by retailer

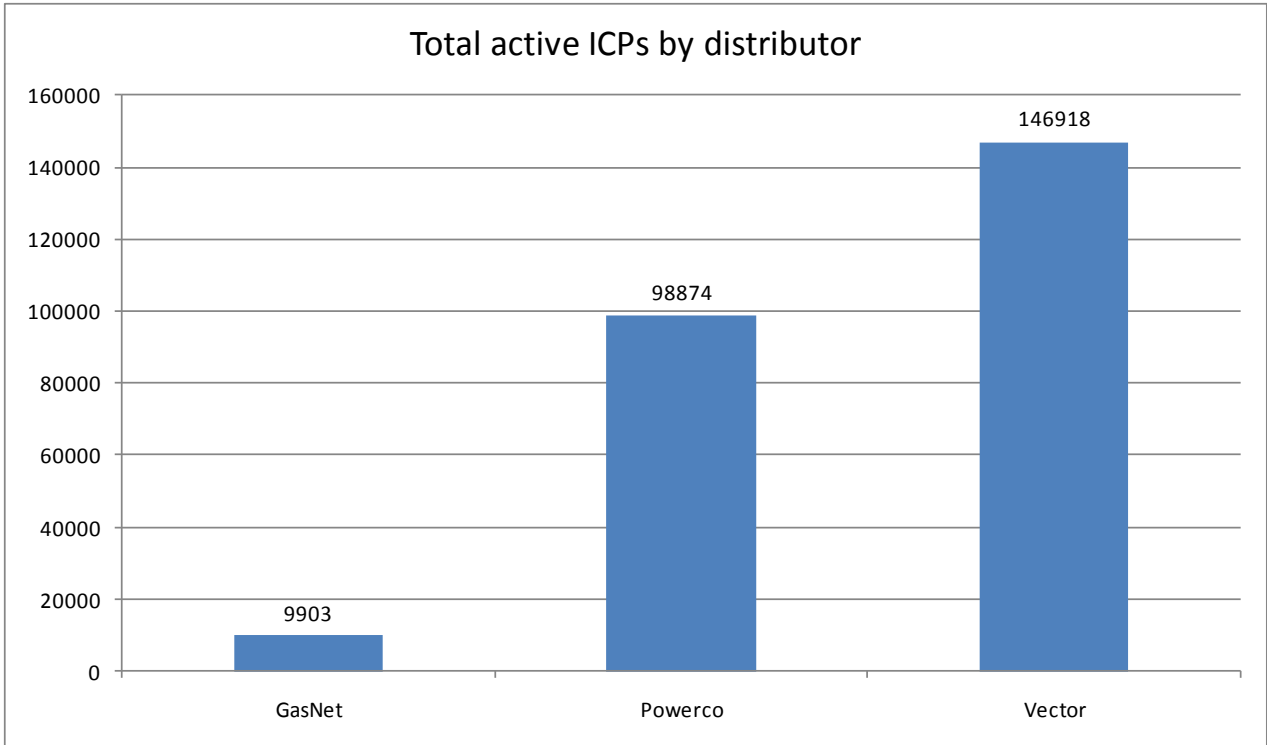
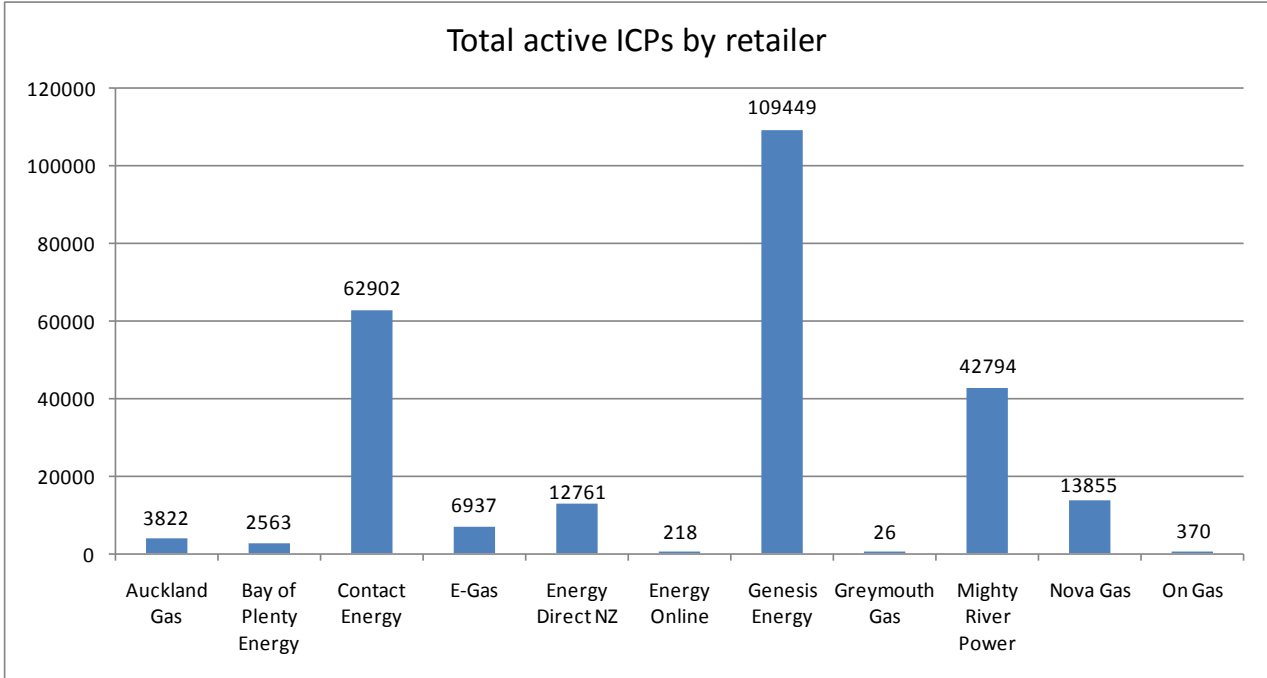


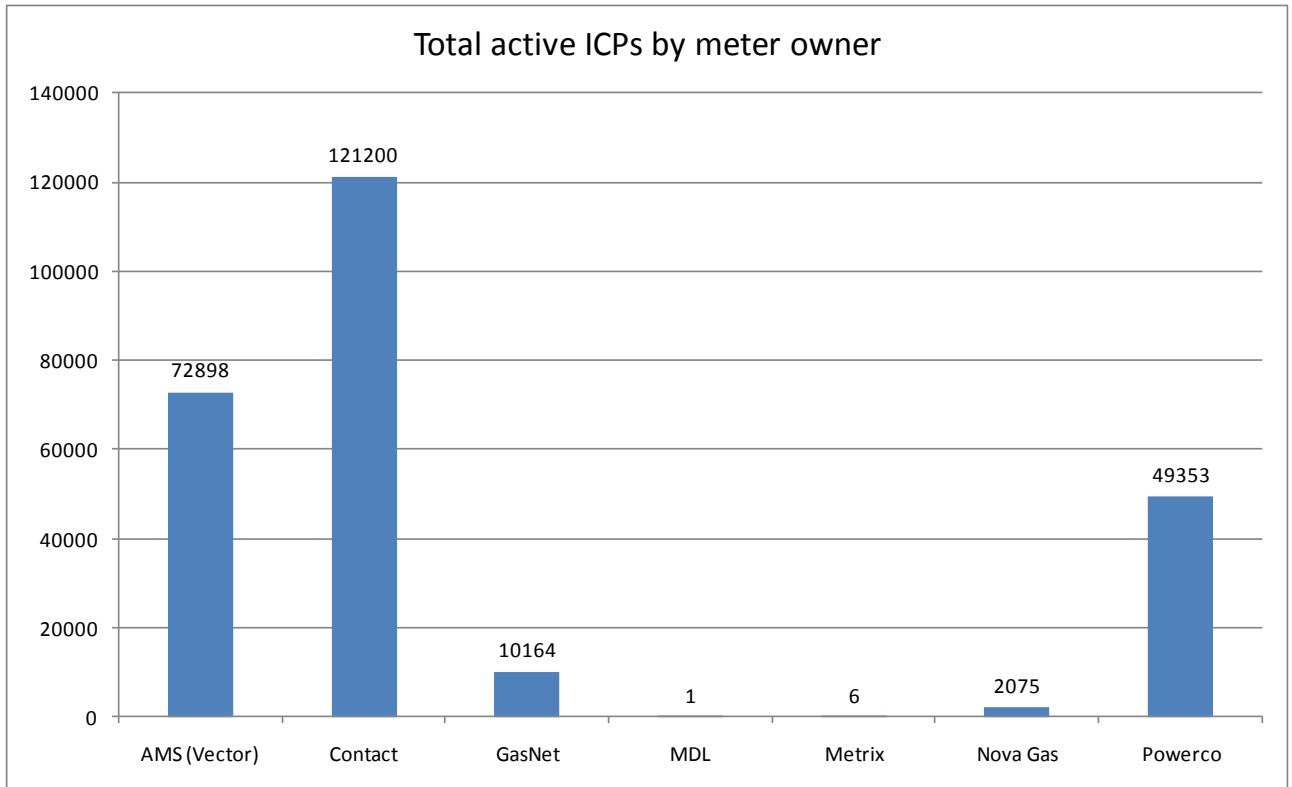
ICPs by status – historical



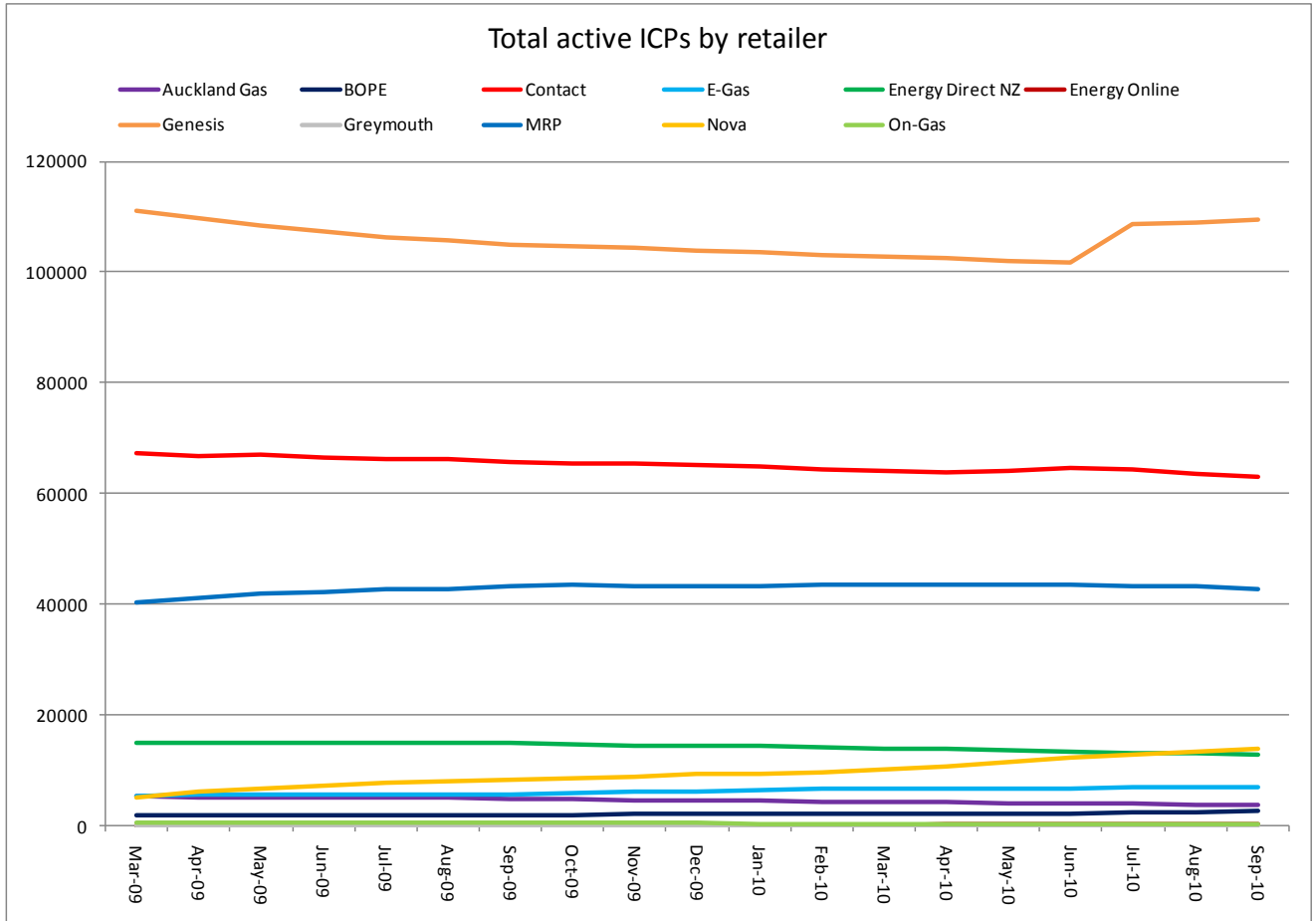
Market shares – September 2010

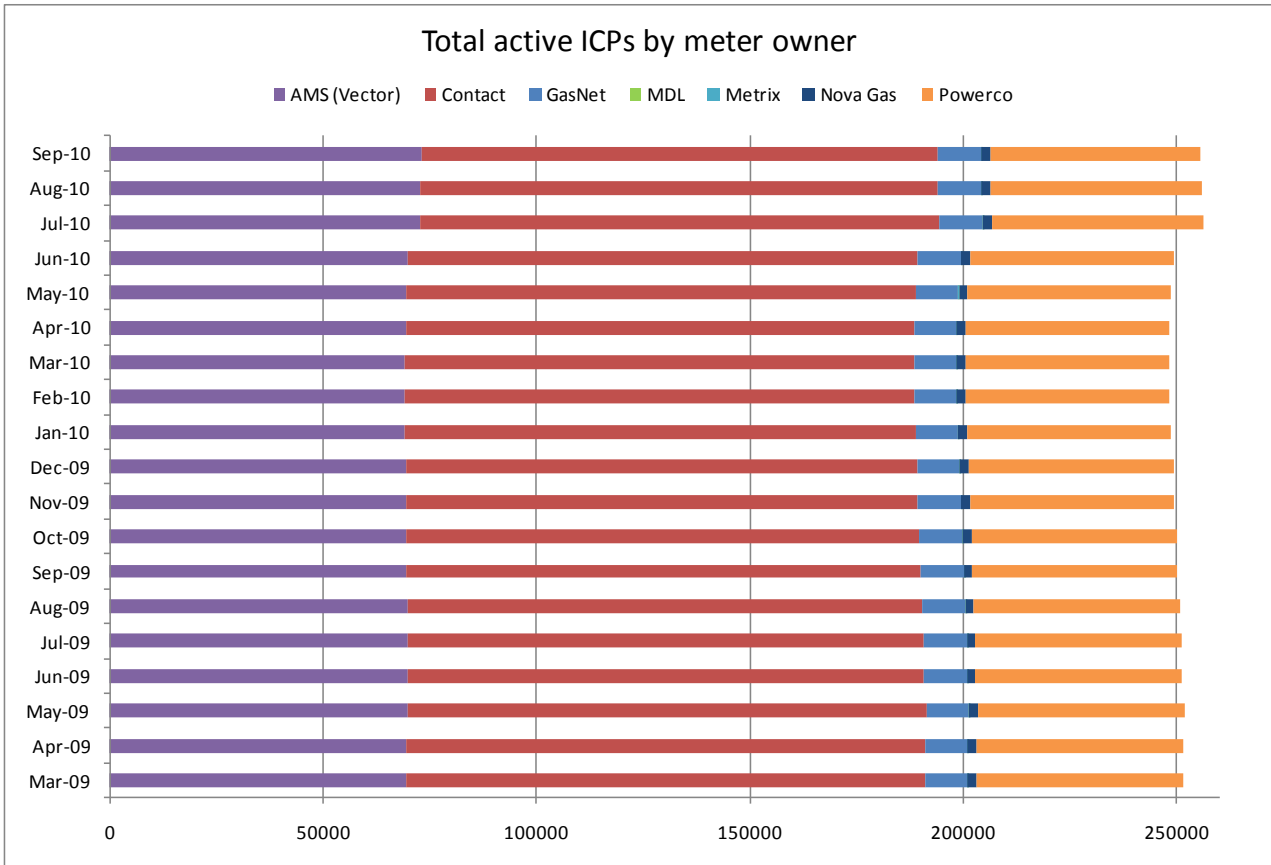
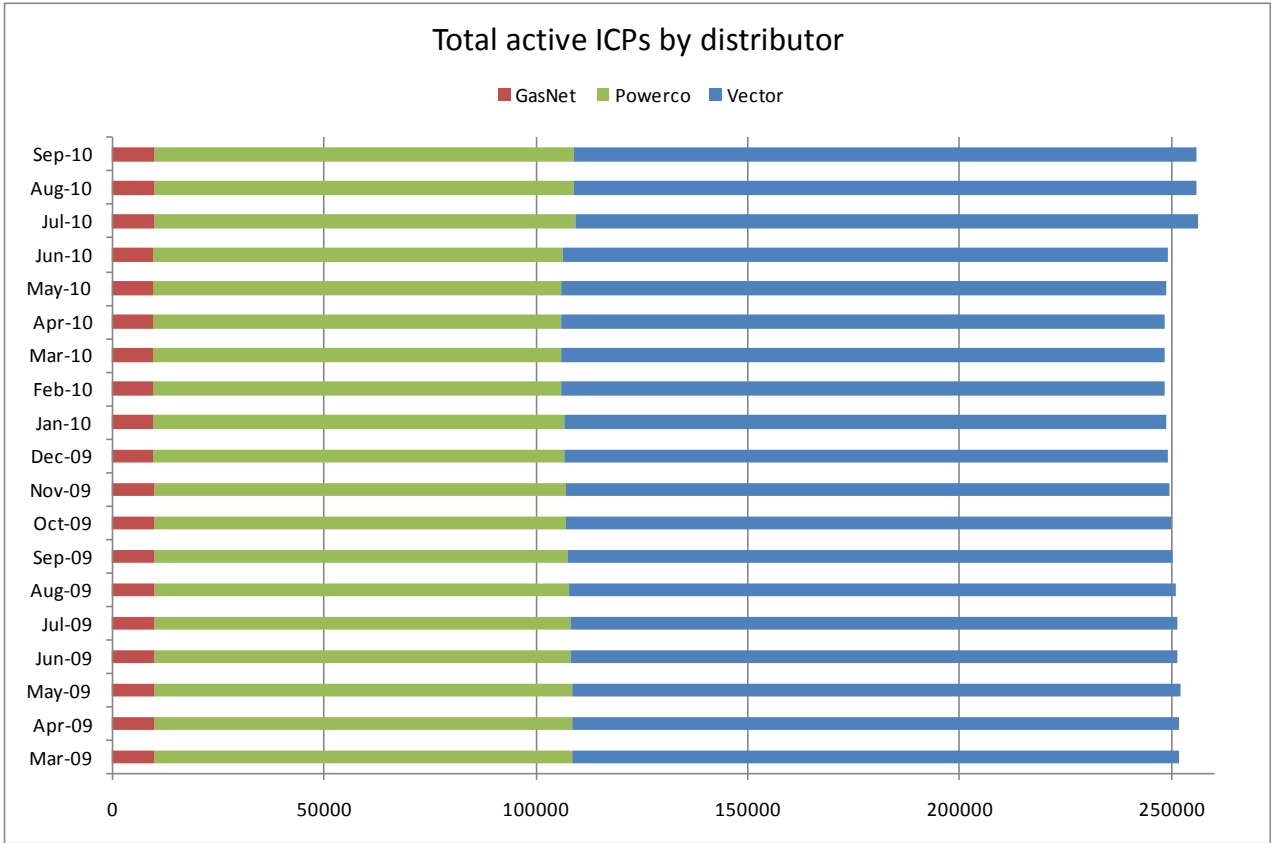
The following charts show the distribution of active-contracted ICPs by retailer, distribution company and meter owner respectively.





Market shares – historical





Active ICPs by gas gate and responsible retailer – September 2010

The following table shows the distribution of active ICPs by gas gate, and the distribution by retailer at each gas gate.

The responsible retailer codes are as follows:

AGCL—Auckland Gas Company

BOPE—Bay of Plenty Energy

CTCT—Contact Energy

EGAS—E-Gas 2000

EGLT—E-Gas Ltd

EDNZ—Energy Direct NZ (Wanganui Gas)

GENG—Genesis Energy

GEND—Genesis Energy

GEOL—Energy Online

GMTH—Greymouth Gas

MEEN—Mighty River Power

GNVG—Nova Gas

GNGC—OnGas (Vector)

Gas Gate	AGCL	BOPE	CTCT	EDNZ	EGAS	EGLT	GEND	GENG	GEOL	GMTH	GNGC	GNVG	MEEN	Total
ALF15501											1			1
ASH34301			62	33		9		46				49	9	208
BAL08201										1				1
BAL09626										1				1
BEL24510			1730	28	268	458		17334	3		11	1152	1517	22501
BMC17901	136		443	2	12	46		307			3	41	707	1697
BRO36301											1			1
CAM17201	1		63			43		1482				1	174	1764
DAN05001			79		6	15		9			1	2		112
DRU15101	1		14		1	3		2			2	4	3	30
DRU15102	1		4			1		7			4	2	4	23
EGC30701			1											1
EGC30702		2	1			1		3						7
ELM12301		4	50	38		4		239			3	1		339
FLD03001			561	304	8	51	1	462			1	284	54	1726
FLH21901			1	3				2						6
FOX22101			223	12	6	7	1	19	5		1	14	16	304
GIS07810			853	229	1	155	3	2098			3	6		3348
GLB03401											1			1
HAR11801								1			4			5
HEN74101	820		7086	10	96	236	1	5065	1	1	18	156	7262	20752
HPS02993							1							1
HRU16101						1	1	1				1		4

Gas Gate	AGCL	BOPE	CTCT	EDNZ	EGAS	EGLT	GEND	GENG	GEOL	GMTH	GNGC	GNVG	MEEN	Total
HST05210			3144	303	99	284	2	353	131		6	50		4372
HTK08301			1					14					4	19
HTL16601			3			7	1	103			3		4	121
HTV11301	3	8	1377		2	400	3	22819			51	111	2308	27082
HUN15301	1		1								2			4
HWA20801		53	445	335		65		1894			1	10		2803
IGW11901		23	73	112		9		339				3		559
KAP12901			2					2						4
KAW04405		131	9	1		6		111						258
KAW04410											1			1
KAW04411											1			1
KIG16801			4			1							1	6
KIH19101	1		45			38	1	1230			1	1	46	1363
KIN02601								4			2		1	7
KIN04310											1			1
KIW34201										1				1
KIW34202								1			1			2
KKI23701			2									1		3
KPA12401		1	6	6				48						61
KRG24101			1	2		1								4
KTK23901											1			1
KUK22401			6			4		18						28
KUR33601											1			1

Gas Gate	AGCL	BOPE	CTCT	EDNZ	EGAS	EGLT	GEND	GENG	GEOL	GMTH	GNGC	GNVG	MEEN	Total
LAB20201			9	65		5		36				1	1	117
LCF20010			1											1
LNB24301			53	33		3		95			4	89	11	288
LVN24401			2124	125	53	92		293	65		5	54	98	2909
MGK05401										1				1
MMU08001	1	402	111		3	130	2	3115		2	3	14	341	4124
MNA23402			40	34	1	3		173						251
MRV16301			1											1
MRV16302			29			23		561				2	78	693
MSD01801			1											1
MSD01802											1			1
MTG17301			1					38					1	40
MTN23801			61	253		9		144			2	3		472
MTP20601								6						6
MUT19001											1			1
NGW14501			9			2		138					7	156
NPL12101		623	1143	2150	30	197	1	6585			6	48	1	10784
NPS00530			1											1
OAK18601								1						1
OKA13201		2	10	6		1		41						60
OKS32801						1							1	2
OKU16701		8	32	50		1		125				1		217
OPK13001		3	31	14				127						175

Gas Gate	AGCL	BOPE	CTCT	EDNZ	EGAS	EGLT	GEND	GENG	GEOL	GMTH	GNGC	GNVG	MEEN	Total
OPO32001		48	4			4	1	53						110
ORD24701			1	1		1								3
OTA22601			49	3		26		305				2	6	391
OTB00301			1											1
OTO14101			4			14		157						175
PAH23101								9						9
PAH23201						1		1						2
PAP06603	3		27		1		1	15				3	55	105
PAP06610	341		4353	9	62	166	1	646		1	52	117	3333	9081
PAU20101			502	47	10	187		2394			2	2	97	3241
PGH15901			1											1
PGU13101								14						14
PHT04901			43			12		36			1			92
PIR31101								44					5	49
PLN24201			4358	1734	49	279		3970	4		21	4041	386	14842
PPA33201			1					7						8
PTA20901		3	20	27		2		137			1	1		191
PTR32601		3	13			20		289			1		13	339
PUK04201	7		65		4	10	1	14				13	57	171
RAG33401												1		1
RAM15201			1								2			3
ROT08101		257	270	1	1	185	1	2718			11	37	426	3907
RPR30801			2			1		21					1	25

Gas Gate	AGCL	BOPE	CTCT	EDNZ	EGAS	EGLT	GEND	GENG	GEOL	GMTH	GNGC	GNVG	MEEN	Total
STR10201		12	97	100		24		671				3		907
TAC31001											1			1
TAT16401										1				1
TAU07001		101	227	2	1	155		1367			1	2	172	2028
TCC00201			1											1
THO22701			2			2		11						15
TIR33501			1											1
TIR33502		2	1			12		55					7	77
TKN17001			1			8		146			1	1		157
TKP05101												1		1
TKR19701		5	44		1	49		884			1	2	44	1030
TKS17401			1			1		16		1	2			21
TPK33301		26	5			26	1	536					23	617
TRC02003			1											1
TRG07701		567	117	3		214		3062			5	12	265	4245
TTK30601		2						4						6
TUK06501	1		6					1			2	1	1	12
TWA35610			8740	60	255	610	4	9361	6		30	6611	2296	27973
WAG21501			475	6282		77		2394		2	2	75		9307
WAK22801			186	13		76		1192					10	1477
WEL18301			1			2		18				1	1	23
WHG07501			70	2	1	100		943			5	2	86	1209
WHK32101		244	7			39		154			3		8	455

Gas Gate	AGCL	BOPE	CTCT	EDNZ	EGAS	EGLT	GEND	GENG	GEOL	GMTH	GNGC	GNVG	MEEN	Total
WKE19201											1			1
WRK18901			20			10		151			2	5	67	255
WST03610	2466		22175	15	381	710	6	5442	1	13	69	598	21361	53237
WTA16501						1		39		1		3	1	45
WTG06910			556	9	91	122	1	4527	2		3	186	523	6020
WTK33901	11		260			12	1	1292				12	713	2301
WTK33902	28		122		3	8		187				6	188	542
WTR12001		33	122	305		13		634			2	16		1125
WTT20301											1			1
WVY23601			2				1	4						7
Total	3822	2563	62902	12761	1446	5491	37	109412	218	26	370	13855	42794	255697