

Gas Registry statistics – November 2010

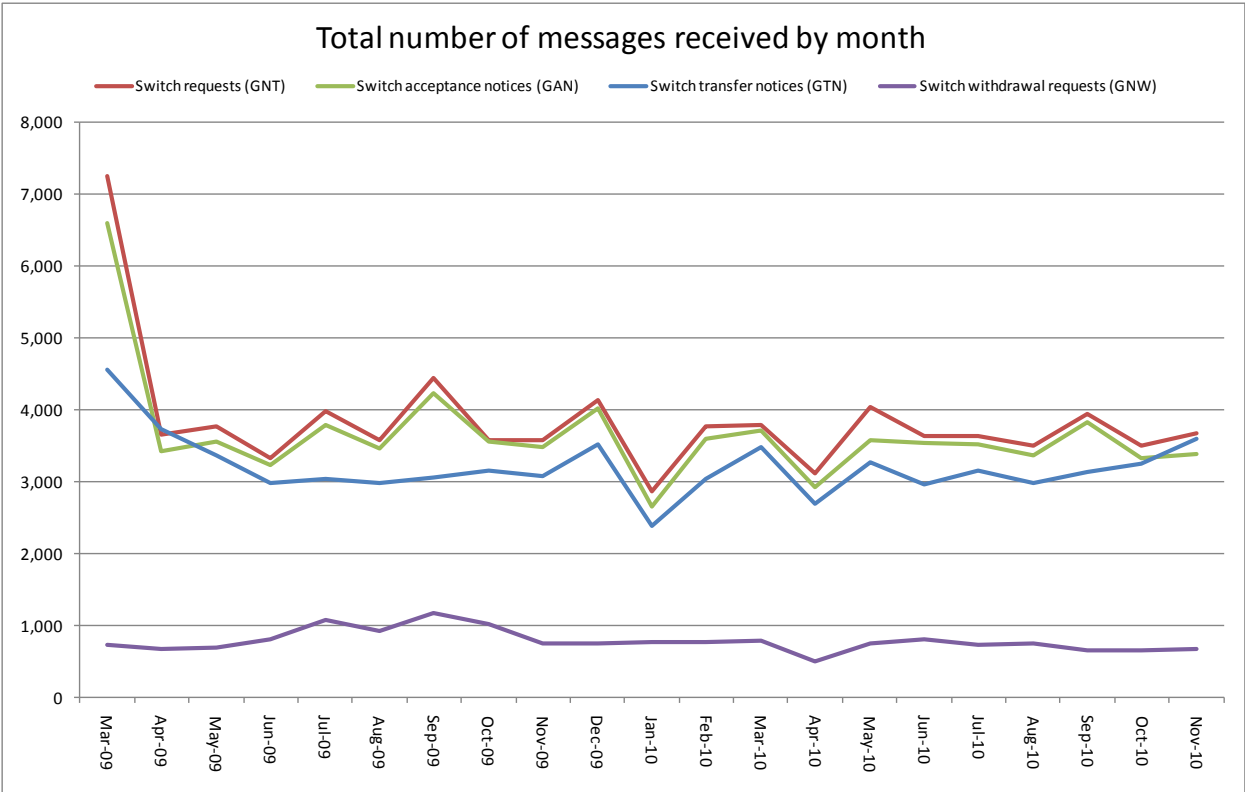
The following report provides statistics and charts illustrating gas registry usage, switching volumes and breakdowns of retailer, distributor and meter owner market shares. The information is provided in accordance with version 1.2 of the Determinations by the Industry Body (Gas Industry Co) under the Gas (Switching Arrangements) Rules 2008, dated 20 February 2009.

Summary registry statistics – November 2010

ICP enquiries processed in month (Online)	29,794
ICP enquiries processed in month (Offline)	7,300,601
Total ICP enquiries processed in month	7,330,395
ICPs added to the Registry in month	489
ICPs changed in month	1,663
ICPs decommissioned in month	25
Valid standard switch requests (GNT-S) received in month	2,129
Valid move switch requests (GNT-SM) received in month	1,546
Valid switch requests (GNT) received in month	3,675
Valid switch acceptance notices (GAN) received in month	3,393
Valid switch transfer notices (GTN) received in month	3,598
Valid switch withdrawal requests (GNW) received in month	666
Valid switch withdrawal acceptances (GAW-A) received in month	625
Valid switch withdrawal rejections (GAW-R) received in month	83
Valid switch reading renegotiation requests (GNC) received in month	67
Valid switch reading renegotiation acceptances (GAC-A) received in month	58
Valid switch reading renegotiation rejections (GAC-R) received in month	2

Note: A switch transfer notice (GTN) is the last stage required to complete the switching process. This statistic indicates the number of switches completed in the month.

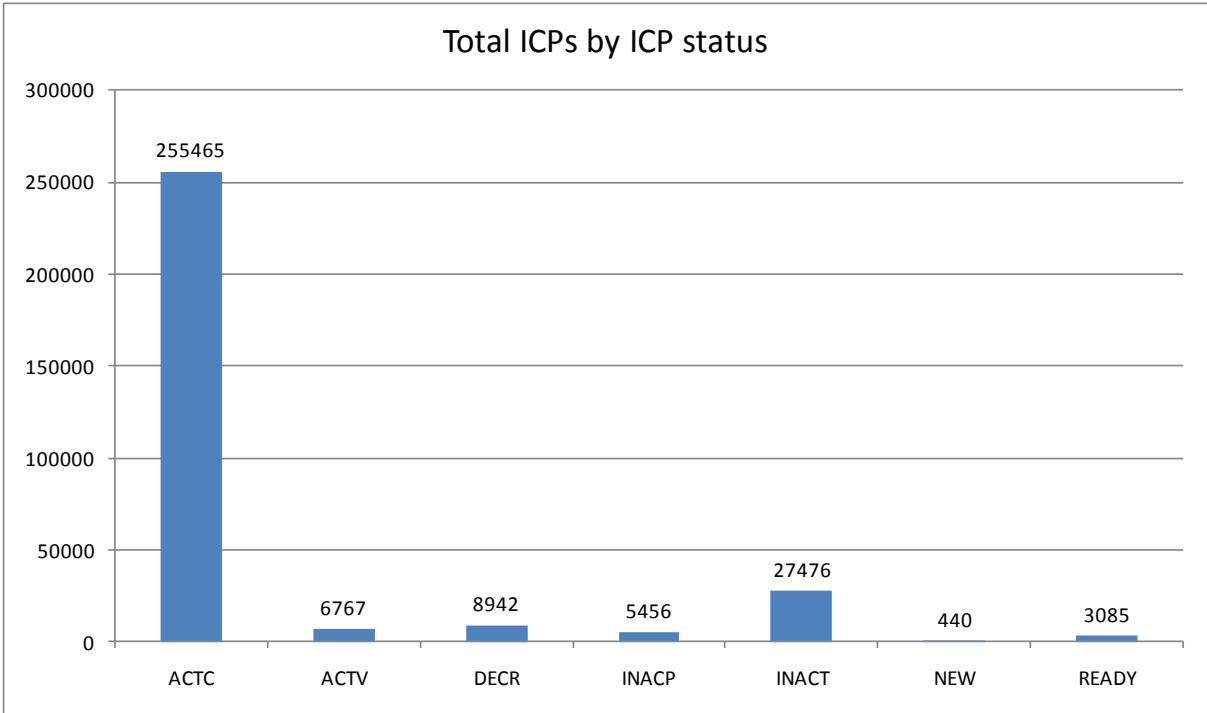
Switching activity – historical



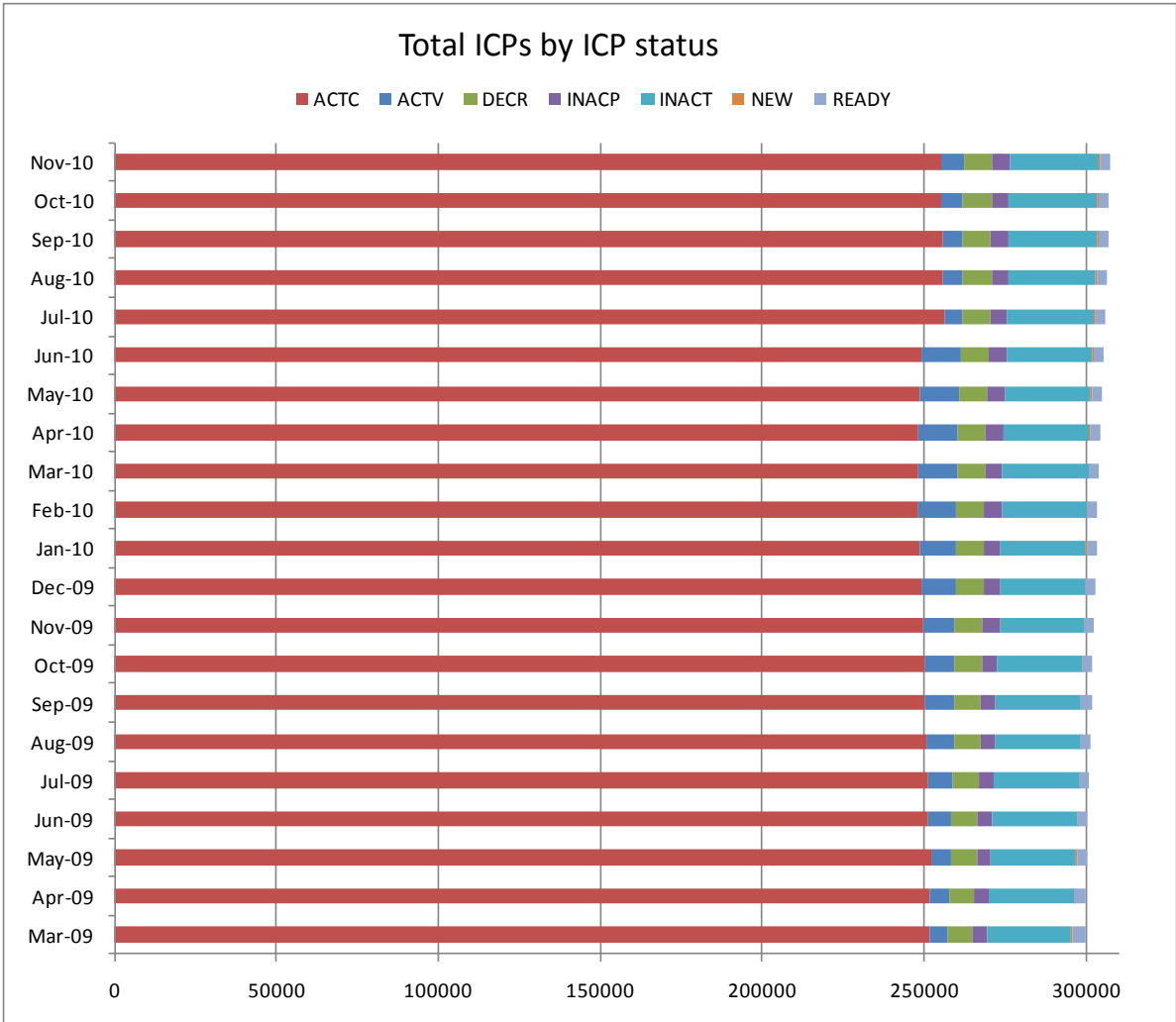
ICPs by status – November 2010

The meaning of the ICP status codes are as follows:

- ACTC—Active contracted (gas is able to flow and the customer has a contract with a retailer)
- ACTV—Active vacant (gas is able to flow and the premises is vacant)
- DECR—Decommissioned
- INACP—Inactive permanent (gas unable to flow due to a permanent disconnection)
- INACT—Gas unable to flow due to a temporary disconnection
- NEW—Newly created ICP, gas not yet able to flow
- READY—New ICP, gas able to flow, awaiting uplift by retailer

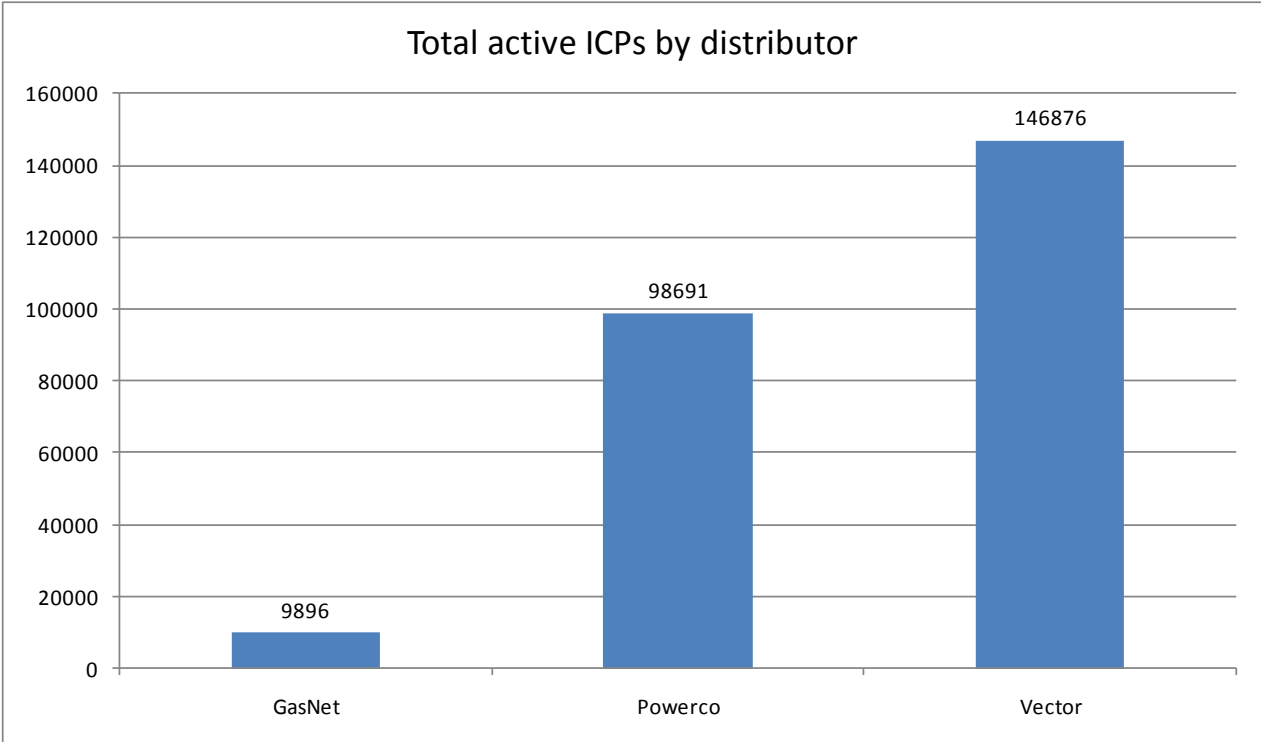
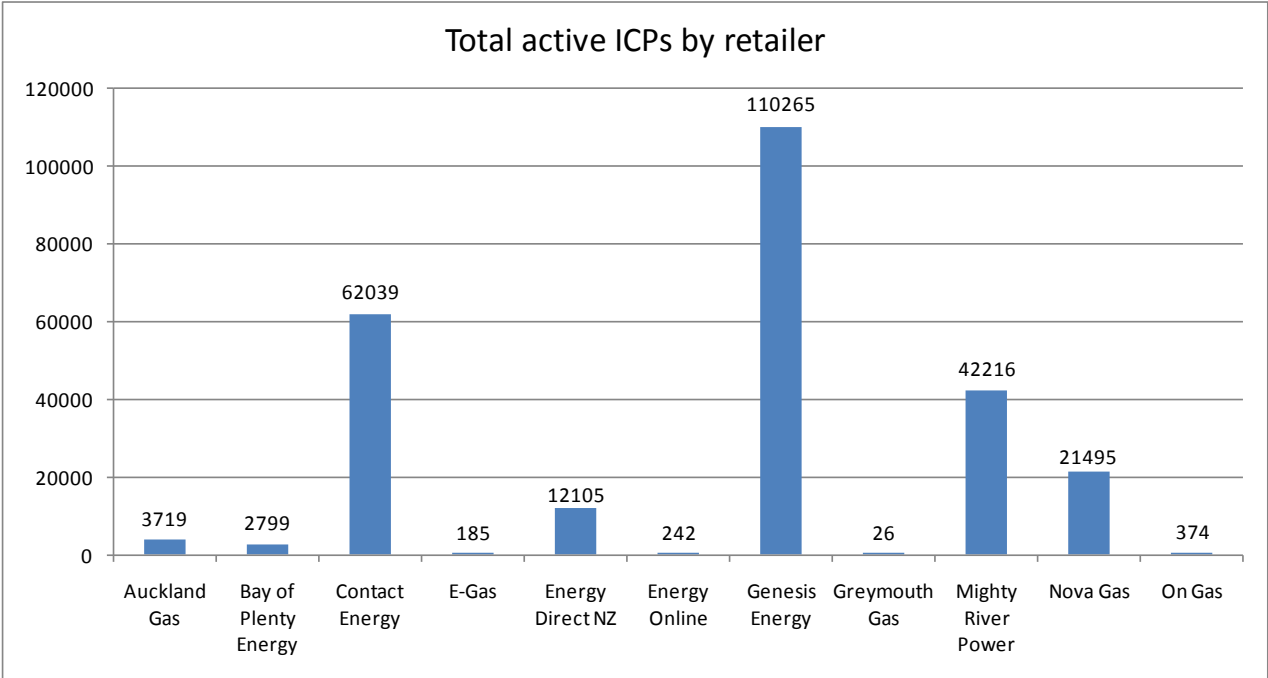


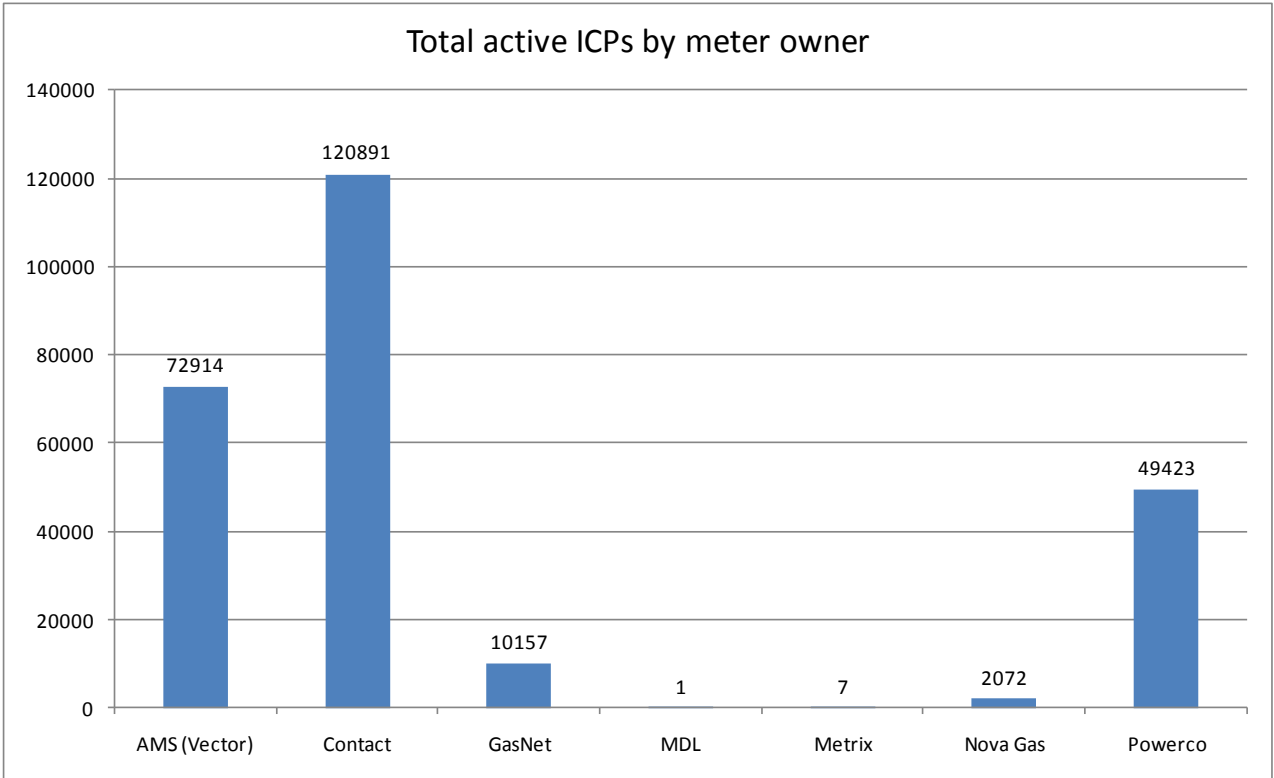
ICPs by status – historical



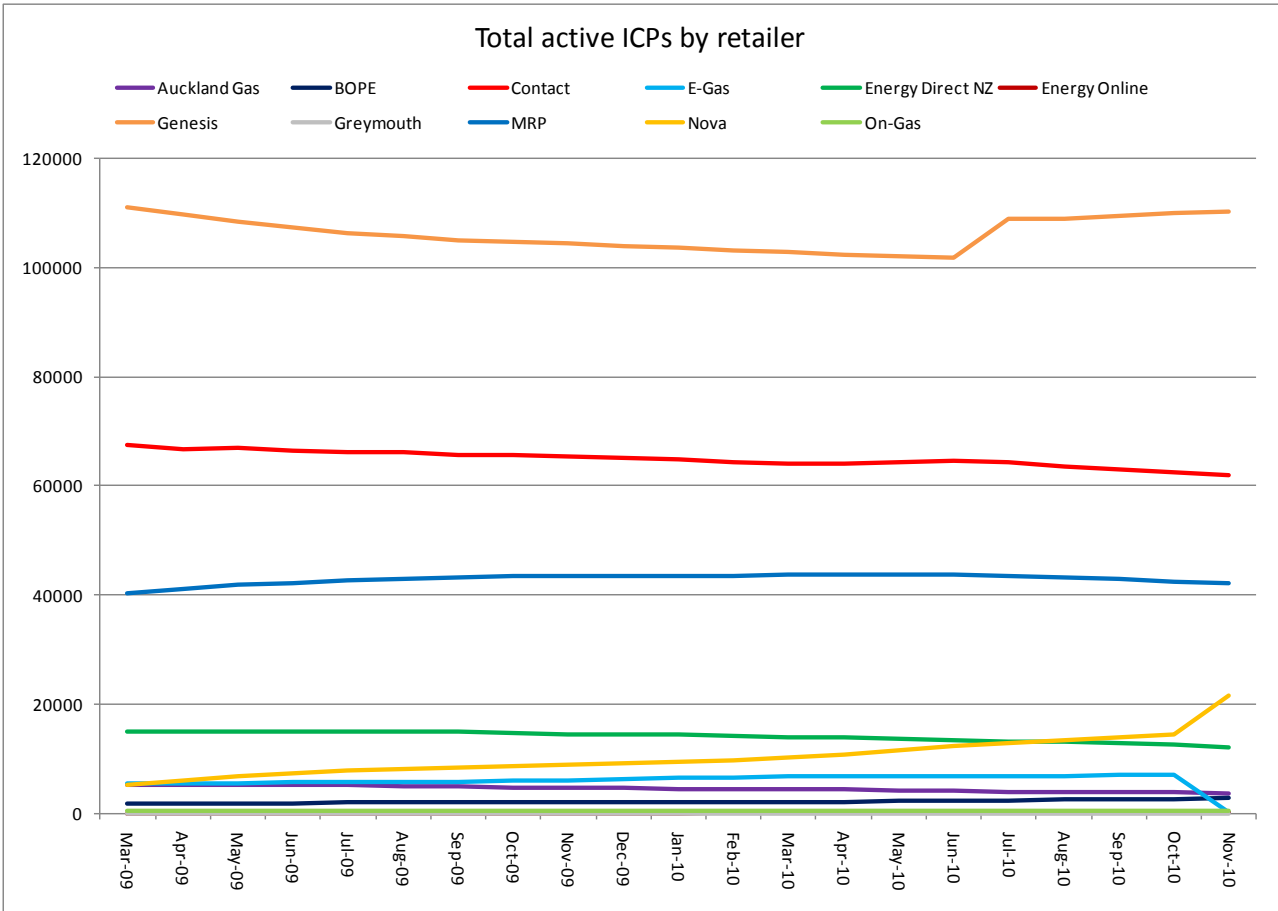
Market shares – November 2010

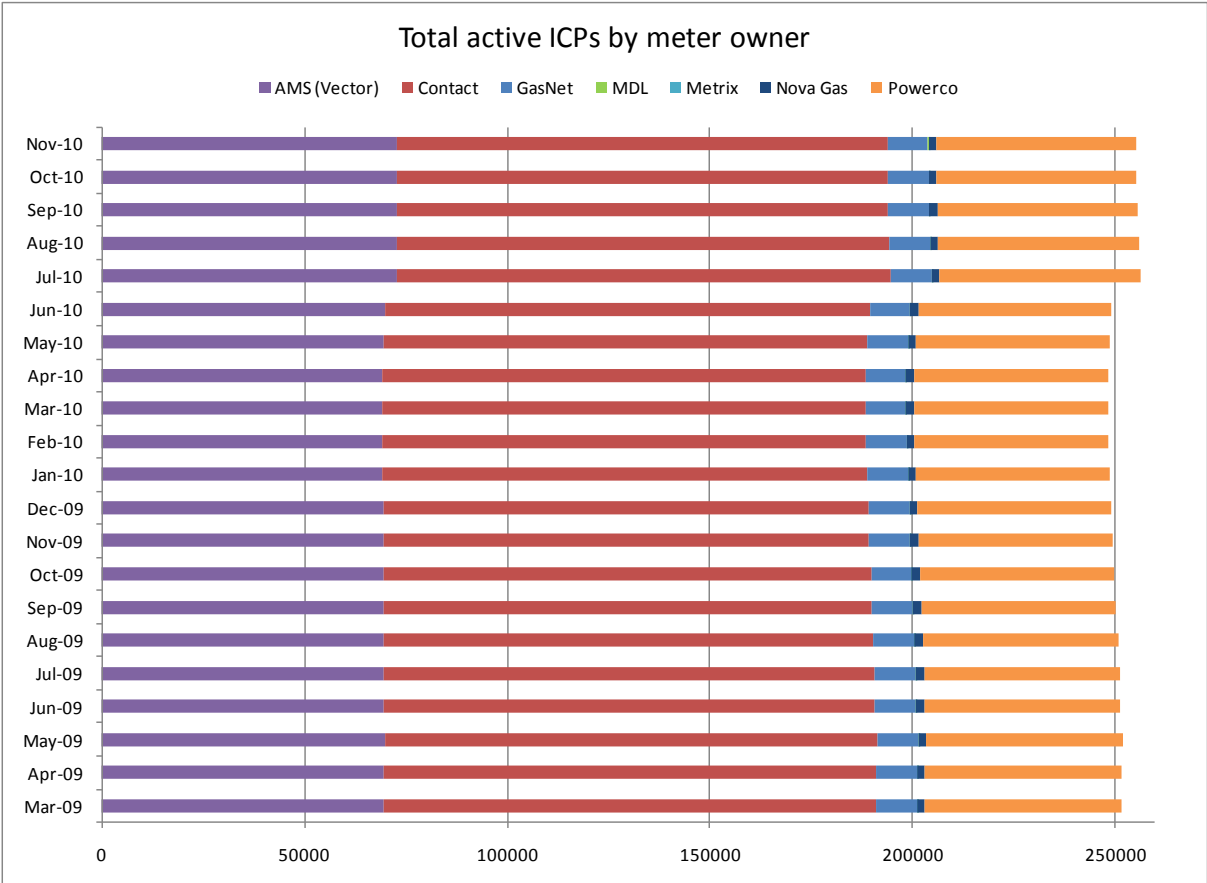
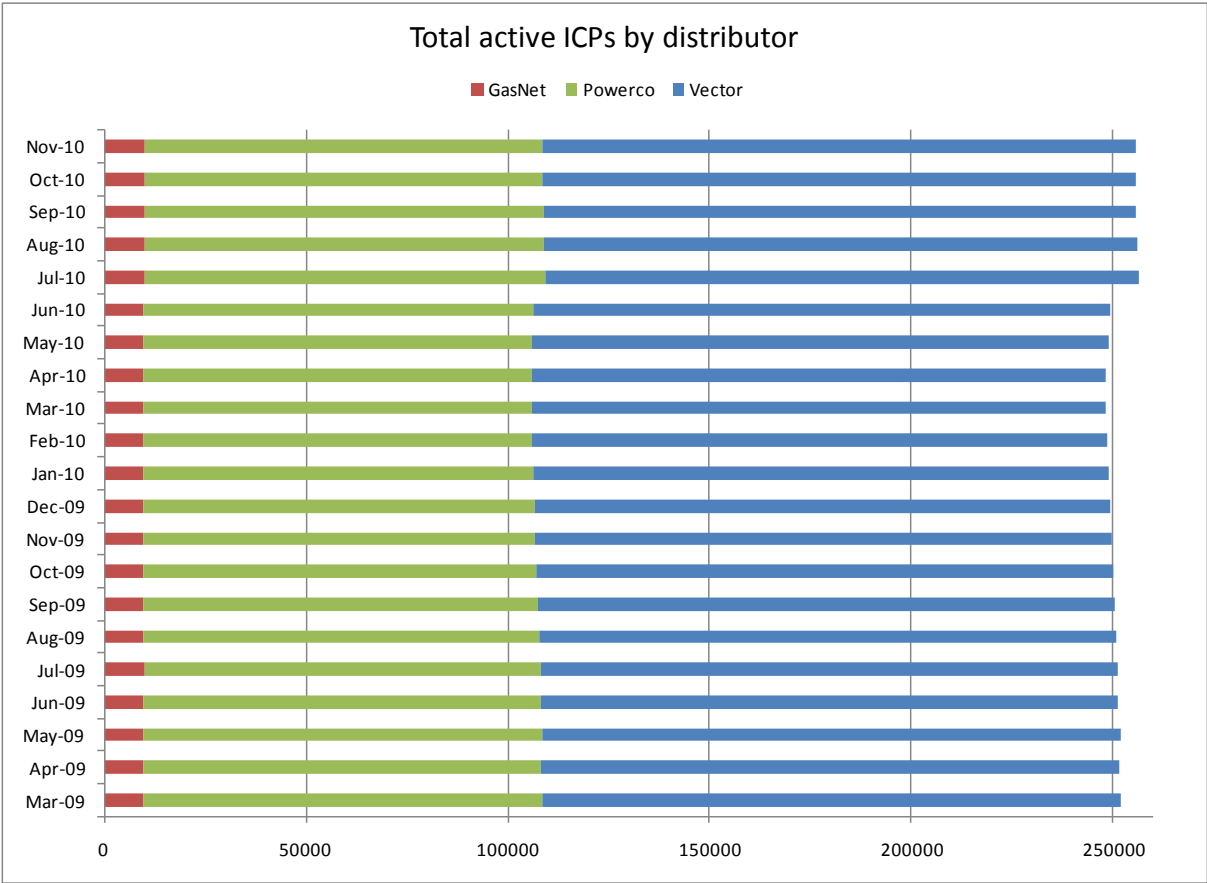
The following charts show the distribution of active-contracted ICPs by retailer, distribution company and meter owner respectively.





Market shares – historical





Active ICPs by gas gate and responsible retailer – November 2010

The following table shows the distribution of active ICPs by gas gate, and the distribution by retailer at each gas gate.

The responsible retailer codes are as follows:

AGCL—Auckland Gas Company

BOPE—Bay of Plenty Energy

CTCT—Contact Energy

EGAS—E-Gas 2000

EGLT—E-Gas Ltd

EDNZ—Energy Direct NZ (Wanganui Gas)

GENG—Genesis Energy

GEND—Genesis Energy

GEOL—Energy Online

GMTH—Greymouth Gas

MEEN—Mighty River Power

GNVG—Nova Gas

GNGC—OnGas (Vector)

Gas Gate	AGCL	BOPE	CTCT	EDNZ	EGAS	EGLT	GEND	GENG	GEOL	GMTH	GNGC	GNVG	MEEN	Total
ALF15501											1			1
ASH34301			59	31				51				59	8	208
BAL08201										1				1
BAL09626										1				1
BEL24510			1687	35	4	14		17388	3		11	1838	1494	22474
BMC17901	131		453	2	1			332			3	96	697	1715
BRO36301											1			1
CAM17201	1	1	58					1489				45	174	1768
DAN05001			78			2		10			1	21		112
DRU15101	1		14			1		2			2	7	3	30
DRU15102	1		4					8			4	4	4	25
EGC30701			1											1
EGC30702		2	1					3				1		7
ELM12301		7	50	37				240			3	5		342
FLD03001			464	240			1	445			1	530	38	1719
FLH21901			1	3				2						6
FOX22101			224	12			1	18	5		1	25	16	302
GIS07810			855	231		3	3	2082			3	160		3337
GLB03401											1			1
HAR11801								1			4			5
HEN74101	803		7090	4	1	8	1	5270	10	1	18	485	7123	20814
HPS02993							1							1
HRU16101							1	1				2		4

Gas Gate	AGCL	BOPE	CTCT	EDNZ	EGAS	EGLT	GEND	GENG	GEOL	GMTH	GNGC	GNVG	MEEN	Total
HST05210			3132	297	1	4	2	354	135		6	439		4370
HTK08301			2					13					3	18
HTL16601			3				1	103			3	6	4	120
HTV11301	3	9	1422			8	3	22731			51	501	2234	26962
HUN15301	1			1							2			4
HWA20801		59	454	333		3		1886			1	69		2805
IGW11901		23	86	108				330				12		559
KAP12901			2					2						4
KAW04405		131	9	1				110				5		256
KAW04410											1			1
KAW04411											1			1
KIG16801			4									1	1	6
KIH19101	1		43			2	1	1227			1	38	45	1358
KIN02601								4			2		1	7
KIN04310											1			1
KIW34201										1				1
KIW34202								1			1			2
KKI23701			2									1		3
KPA12401		3	3	6				47						59
KRG24101			1	1								2		4
KTK23901											1			1
KUK22401			6					18				4		28
KUR33601											1			1

Gas Gate	AGCL	BOPE	CTCT	EDNZ	EGAS	EGLT	GEND	GENG	GEOL	GMTH	GNGC	GNVG	MEEN	Total
LAB20201			8	65				38				6	1	118
LCF20010			1											1
LNB24301			53	31				91			4	93	11	283
LVN24401			2100	123	1	1		294	69		5	194	96	2883
MGK05401										1				1
MMU08001	1	412	110			4	4	3118		1	3	144	338	4135
MNA23402			39	34				170				4		247
MRV16301			1											1
MRV16302			31			1		558				23	75	688
MSD01801			1											1
MSD01802											1			1
MTG17301			1					32					1	34
MTN23801			61	251				145			2	12		471
MTP20601								6						6
MUT19001											1			1
NGW14501			11					137				2	6	156
NPL12101		793	1144	2072		4	1	6507			6	260	1	10788
NPS00530			1											1
OAK18601								1						1
OKA13201		2	9	6				41				1		59
OKS32801												1	1	2
OKU16701		9	35	50				123				2		219
OPK13001		3	30	14				129						176

Gas Gate	AGCL	BOPE	CTCT	EDNZ	EGAS	EGLT	GEND	GENG	GEOL	GMTH	GNGC	GNVG	MEEN	Total
OPO32001		50	4				1	54				3		112
ORD24701			1	1								1		3
OTA22601			48	3		2		296				26	6	381
OTB00301			1											1
OTO14101			4					160				14		178
PAH23101								13						13
PAH23201								1				1		2
PAP06603	3		29				1	17				4	55	109
PAP06610	332		4331	6	2	5	3	679		1	54	337	3325	9075
PAU20101			500	46		2		2400			2	195	95	3240
PGH15901			1											1
PGU13101								14						14
PHT04901			40					36			1	11		88
PIR31101								44					5	49
PLN24201			3885	1442		4	1	3932	4		21	5176	311	14776
PPA33201			1					7						8
PTA20901		12	15	24				134			1	3		189
PTR32601		3	13					291			1	19	11	338
PUK04201	7		63				1	16				27	56	170
RAG33401												1		1
RAM15201			1								2			3
ROT08101		260	274			4	1	2689			12	216	418	3874
RPR30801			2					21				1	1	25

Gas Gate	AGCL	BOPE	CTCT	EDNZ	EGAS	EGLT	GEND	GENG	GEOL	GMTH	GNGC	GNVG	MEEN	Total
STR10201		16	104	98			1	659				25		903
TAC31001											1			1
TAT16401										1				1
TAU07001		104	232	2		2		1366			1	157	169	2033
TCC00201			1											1
THO22701			2					11				2		15
TIR33501			1											1
TIR33502		2	2			1		54				11	6	76
TKN17001			1					143			1	9		154
TKP05101												1		1
TKR19701		5	38					884			1	51	43	1022
TKS17401			1					16		1	2	1		21
TPK33301		27	6				1	534				26	23	617
TRC02003			1											1
TRG07701		576	122	3		2		3074			5	225	262	4269
TTK30601		2						4						6
TUK06501	1		6					1			2	1	1	12
TWA35610			8569	61	10	46	4	9527	9		29	7306	2372	27933
WAG21501			442	6095		2		2608		2	2	149		9300
WAK22801			186	16		1		1191				71	11	1476
WEL18301			1					18				3	1	23
WHG07501			72	2		1		941			5	98	86	1205
WHK32101		246	6			2		151			3	37	8	453

Gas Gate	AGCL	BOPE	CTCT	EDNZ	EGAS	EGLT	GEND	GENG	GEOL	GMTH	GNGC	GNVG	MEEN	Total
WKE19201											1			1
WRK18901			22					154			2	15	65	258
WST03610	2394		22114	7	6	23	6	5816	5	14	71	1706	21093	53255
WTA16501						1		38		1		3	2	45
WTG06910			540	11		3	1	4537	2		3	398	522	6017
WTK33901	11		263				1	1314				25	709	2323
WTK33902	28		126			2		188				15	185	544
WTR12001		42	123	300		1		626			2	27		1121
WTT20301											1			1
WVY23601			1				1	5						7
Total	3719	2799	62039	12105	26	159	43	110222	242	26	374	21495	42216	255465