

# Gas Registry statistics – March 2010

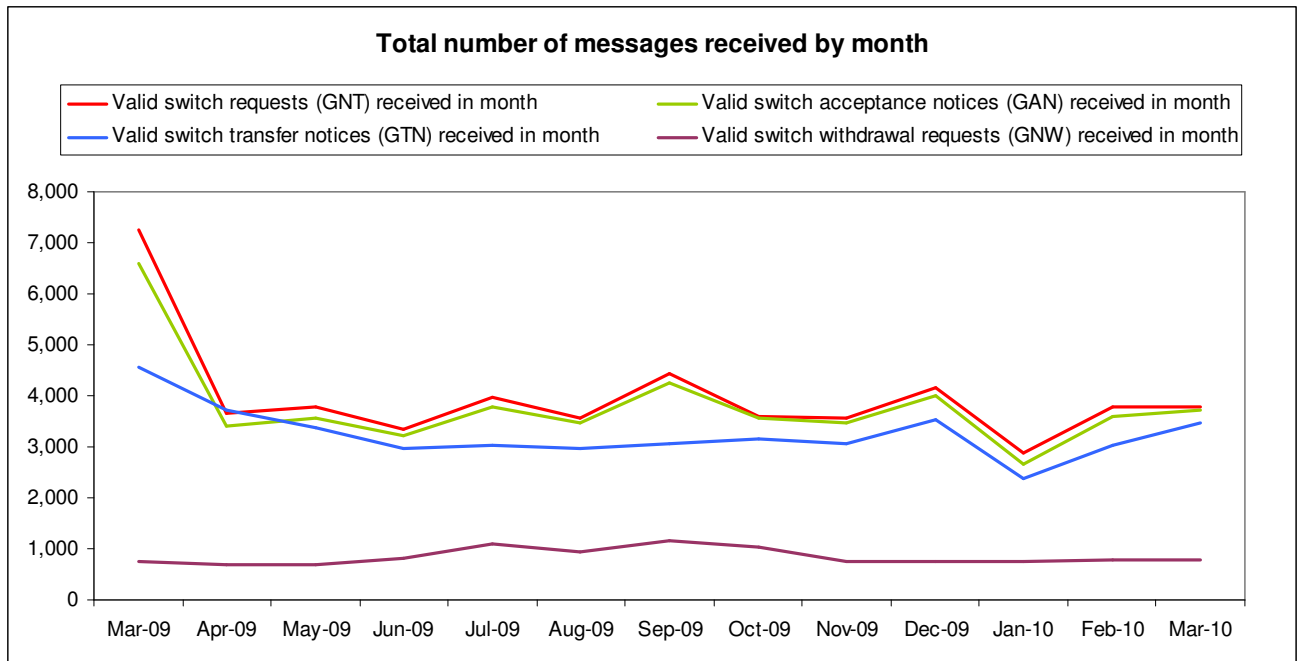
The following report provides statistics and charts illustrating gas registry usage, switching volumes and breakdowns of retailer, distributor and meter owner market shares. The information is provided in accordance with version 1.2 of the Determinations by the Industry Body (Gas Industry Co) under the Gas (Switching Arrangements) Rules 2008, dated 20 February 2009.

## Summary registry statistics

ICP enquiries processed in month (Online)	30,344
ICP enquiries processed in month (Offline)	3,628,526
<b>Total ICP enquiries processed in month</b>	<b>3,658,870</b>
ICPs added to the Registry in month	546
ICPs changed in month	1,269
ICPs decommissioned in month	9
Valid standard switch requests (GNT-S) received in month	2,122
Valid move switch requests (GNT-SM) received in month	1,665
<b>Valid switch requests (GNT) received in month</b>	<b>3,787</b>
Valid switch acceptance notices (GAN) received in month	3,720
<b>Valid switch transfer notices (GTN) received in month</b>	<b>3,479</b>
Valid switch withdrawal requests (GNW) received in month	792
Valid switch withdrawal acceptances (GAW-A) received in month	743
Valid switch withdrawal rejections (GAW-R) received in month	18
Valid switch reading renegotiation requests (GNC) received in month	86
Valid switch reading renegotiation acceptances (GAC-A) received in month	78
Valid switch reading renegotiation rejections (GAC-R) received in month	2

Note: A switch transfer notice (GTN) is the last stage required to complete the switching process. This statistic indicates the number of switches completed in the month.

## Switching activity



## ICPs by status – March 2010

The meaning of the ICP status codes are as follows:

ACTC—Active contracted (gas is able to flow and the customer has a contract with a retailer)

ACTV—Active vacant (gas is able to flow and the premises is vacant)

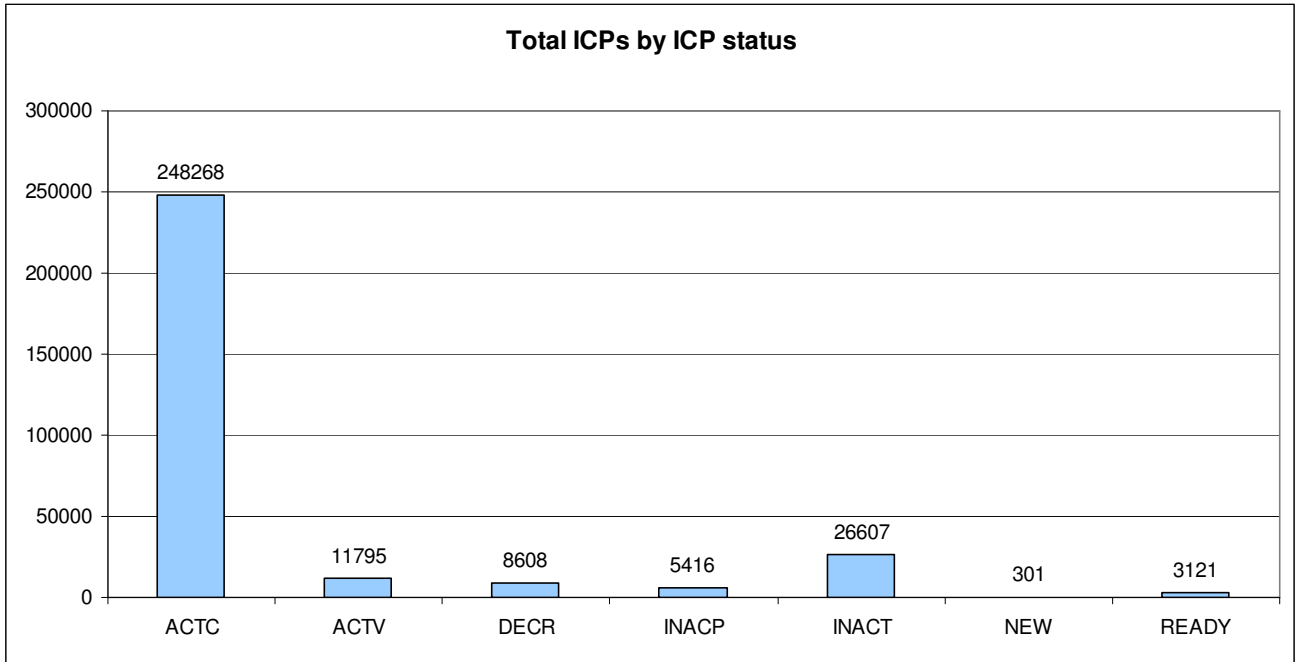
DECR—Decommissioned

INACP—Inactive permanent (gas unable to flow due to a permanent disconnection)

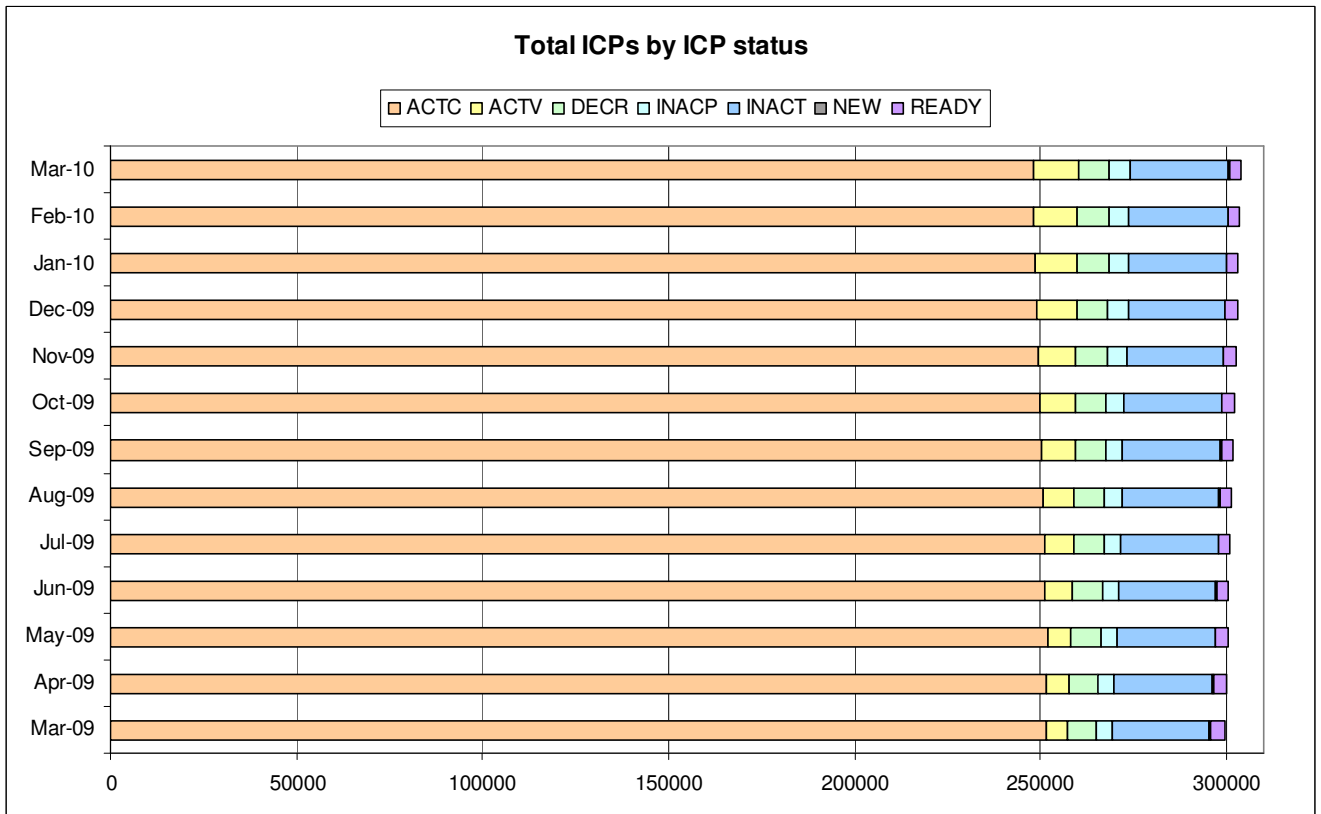
INACT—Gas unable to flow due to a temporary disconnection

NEW—Newly created ICP, gas not yet able to flow

READY—New ICP, gas able to flow, awaiting uplift by retailer

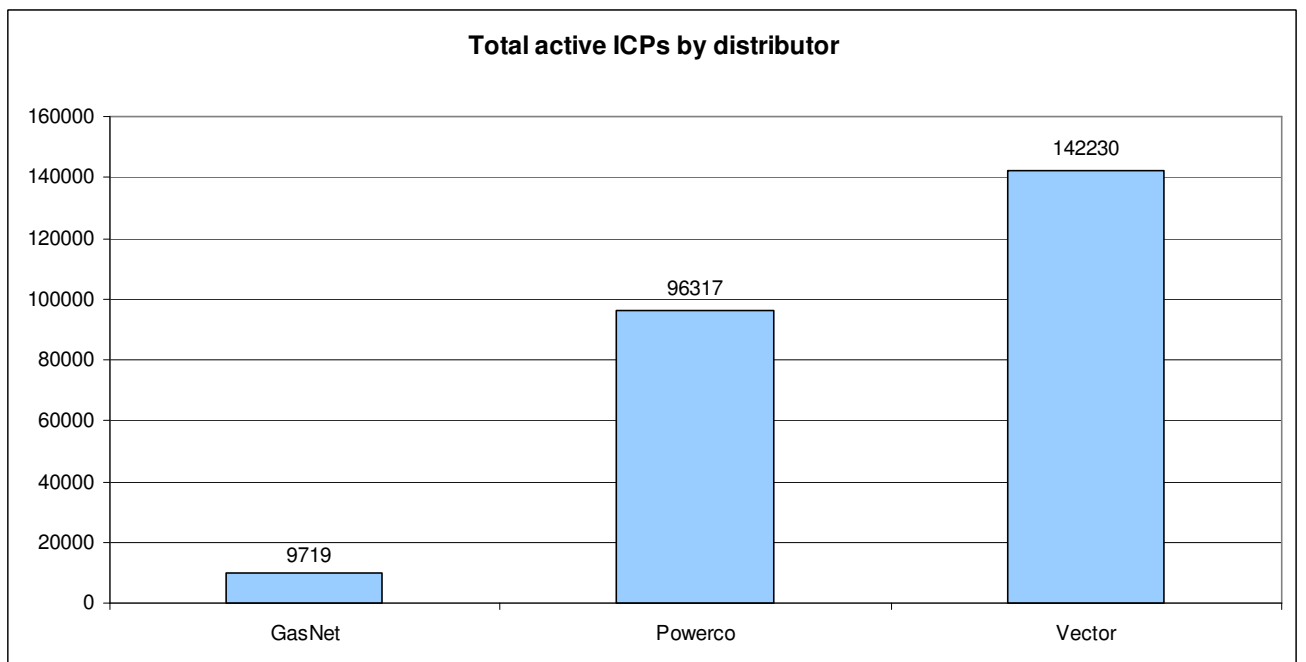
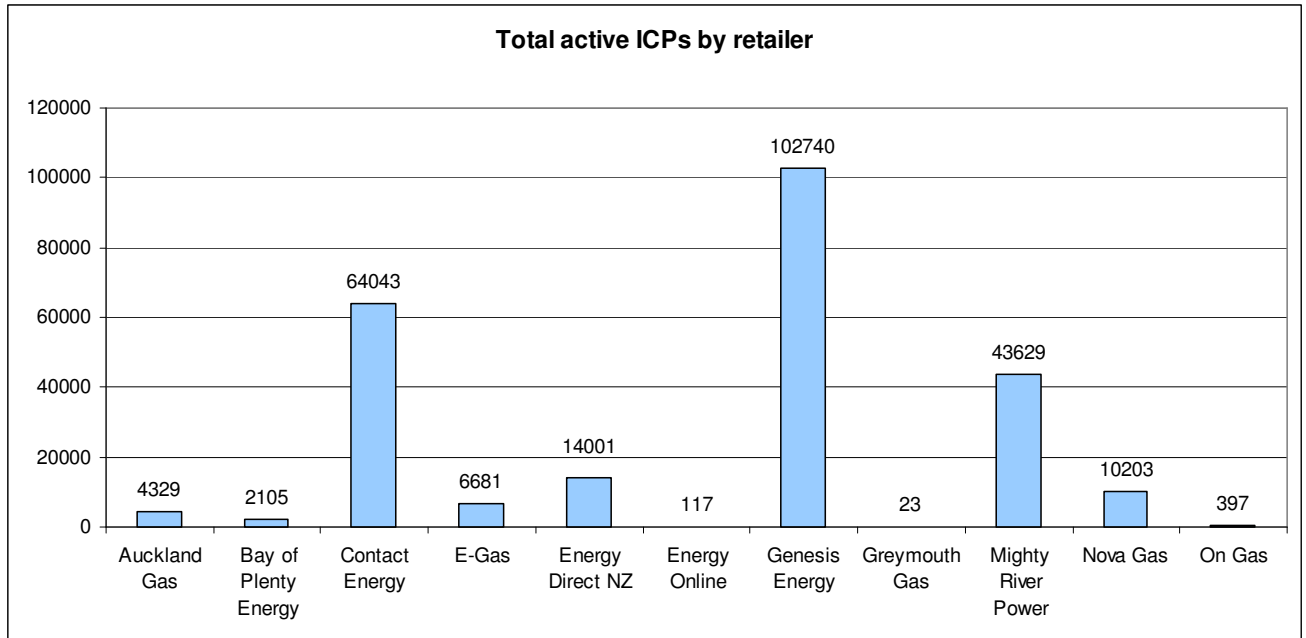


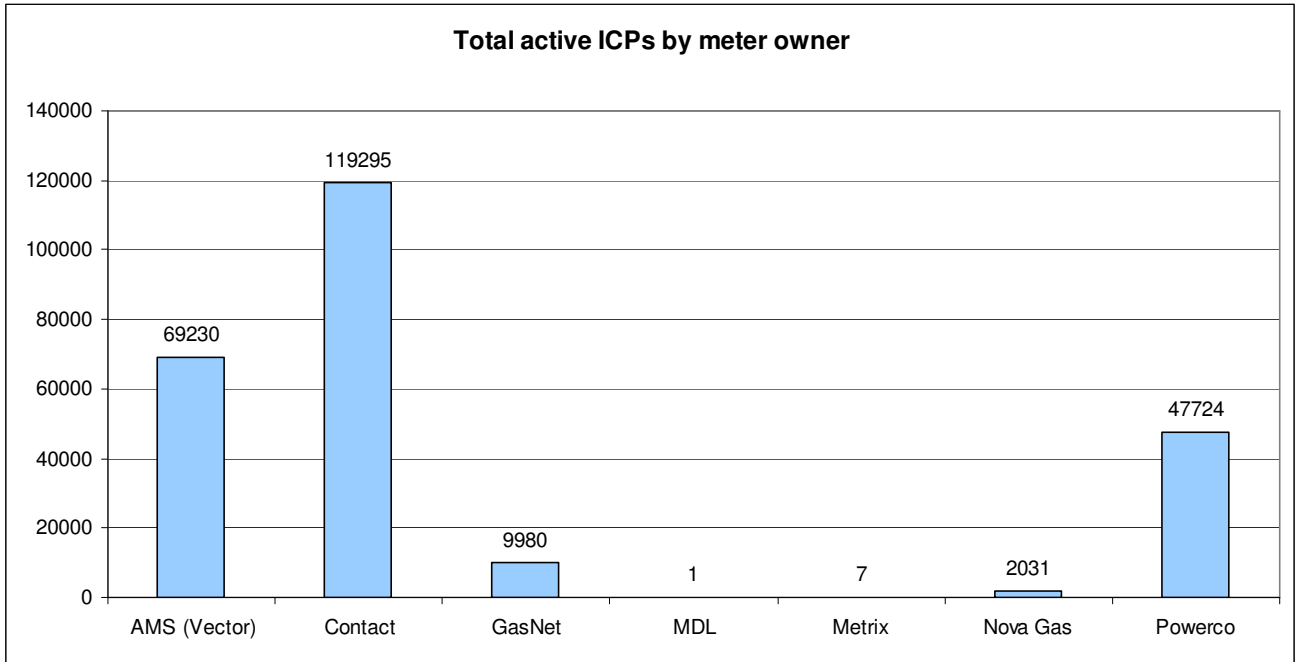
### ICPs by status – historical



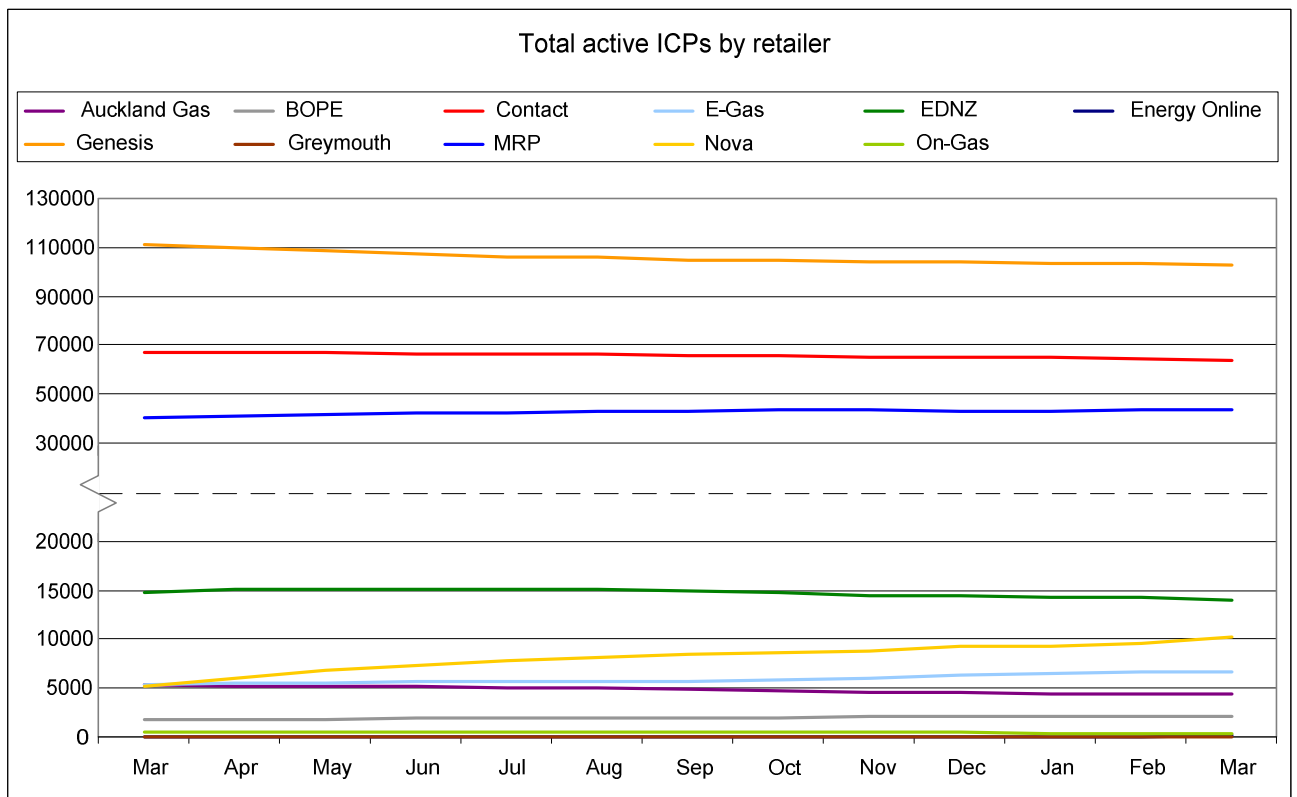
## Market shares – March 2010

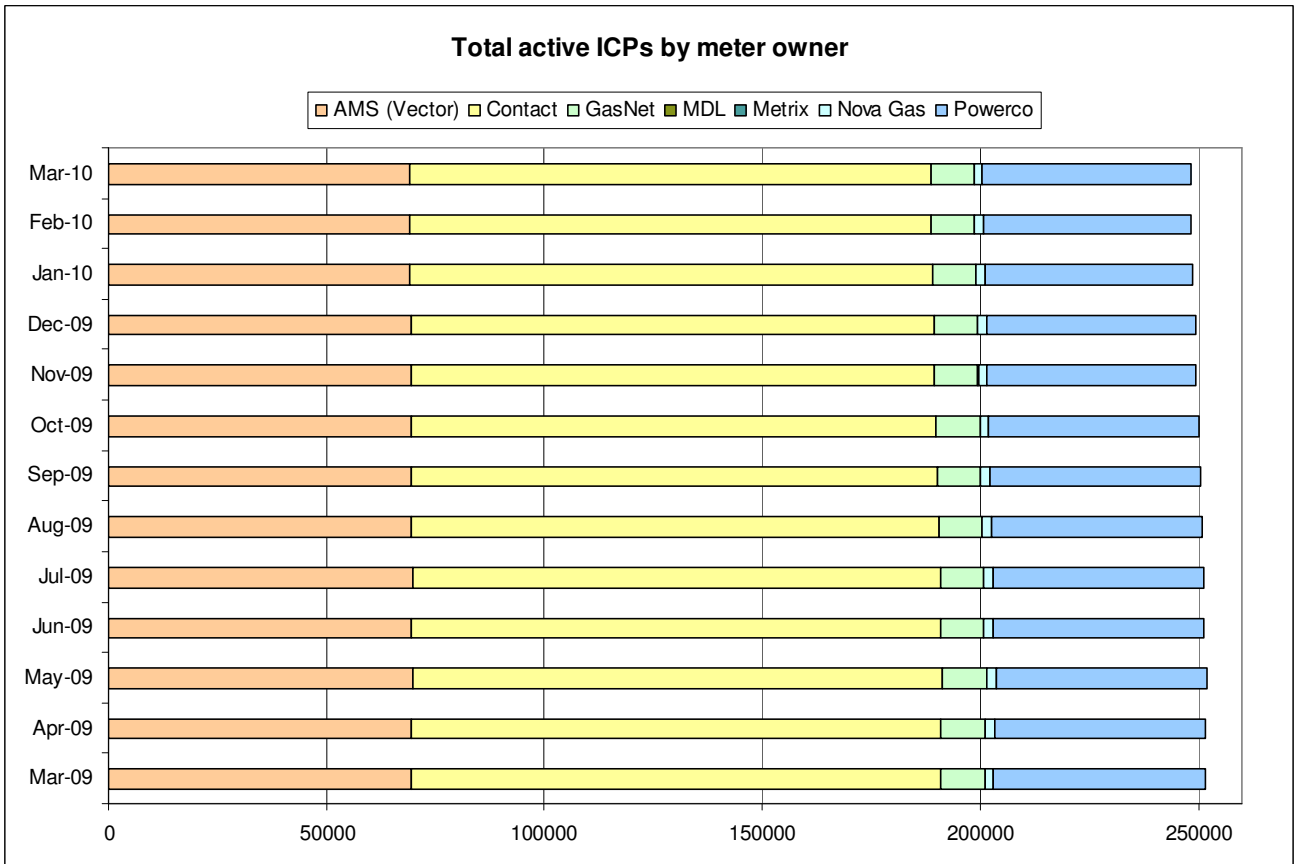
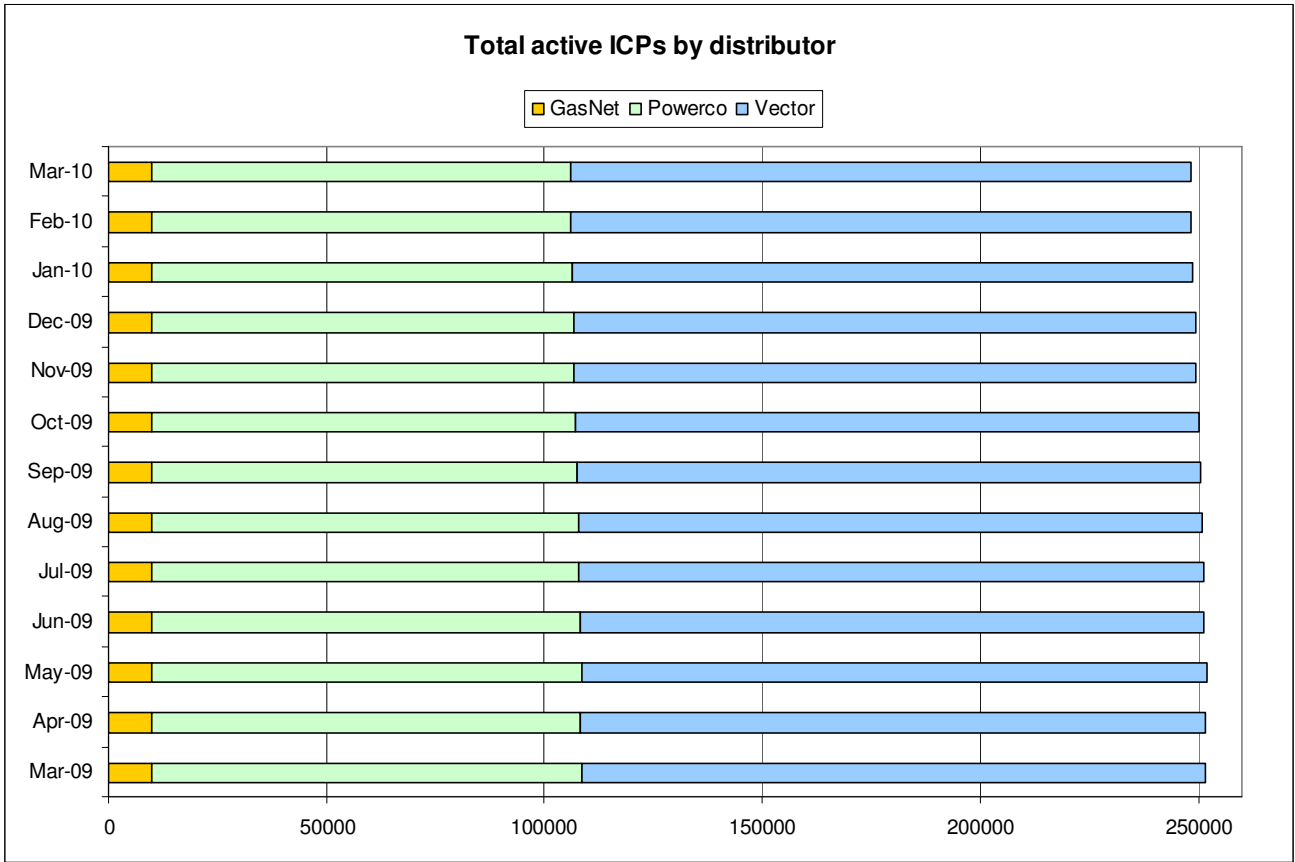
The following charts show the distribution of active-contracted ICPs by retailer, distribution company and meter owner respectively.





## Market shares – historical





## **Active ICPs by gas gate and responsible retailer – March 2010**

The following table shows the distribution of active ICPs by gas gate, and the distribution by retailer at each gas gate.

The responsible retailer codes are as follows:

AGCL—Auckland Gas Company

BOPE—Bay of Plenty Energy

CTCT—Contact Energy

EGAS—E-Gas 2000

EGLT—E-Gas Ltd

EDNZ—Energy Direct NZ (Wanganui Gas)

GENG—Genesis Energy

GEND—Genesis Energy

GEOL—Energy Online

GMTH—Greymouth Gas

MEEN—Mighty River Power

GNVG—Nova Gas

GNGC—OnGas (Vector)

Gas Gate	AGCL	BOPE	CTCT	EDNZ	EGAS	EGLT	GEND	GENG	GEOL	GMTH	GNGC	GNVG	MEEN	Grand Total
ALF15501											1			<b>1</b>
ASH34301			83	55		9		38					14	<b>199</b>
BAL08201			1											<b>1</b>
BAL09626			1											<b>1</b>
BEL24510			1696	15	216	426		16444	3		9	1098	1474	<b>21381</b>
BMC17901	153		412	2	11	48	1	252			4	27	735	<b>1645</b>
BRO36301											1			<b>1</b>
CAM17201	1		55			40		1367				1	176	<b>1640</b>
DAN05001			80		7	12		8			1	2		<b>110</b>
DRU15101	1		14		1	3		3			3	2	2	<b>29</b>
DRU15102	1					1		7			4	1	2	<b>16</b>
EGC30701			1											<b>1</b>
EGC30702		2	1			1		3						<b>7</b>
ELM12301			49	38		4		237			3	1		<b>332</b>
FLD03001			674	413	5	49		455			2	7	82	<b>1687</b>
FLH21901			2	3				1						<b>6</b>
FOX22101			227	12	7	8	1	17	3		1	13	21	<b>310</b>
GIS07810			804	228	1	146	3	2108			5	5		<b>3300</b>
GLB03401											1			<b>1</b>
HAR11801								1			4			<b>5</b>
HEN74101	918		6968	9	98	227	1	4277		1	19	73	7535	<b>20126</b>
HPS02993							1							<b>1</b>
HRU16101						1	1	1			1			<b>4</b>

Gas Gate	AGCL	BOPE	CTCT	EDNZ	EGAS	EGLT	GEND	GENG	GEOL	GMTH	GNGC	GNVG	MEEN	Grand Total
HST05210			3243	314	72	283	1	280	58		7	48		<b>4306</b>
HTK08301								15					4	<b>19</b>
HTL16601						8	1	95			3		2	<b>109</b>
HTV11301	5	3	1044		2	444	1	21312			51	113	2452	<b>25427</b>
HUN15301	1		1								2			<b>4</b>
HWA20801		21	428	333		65		1872			1	10		<b>2730</b>
IGW11901		11	71	116		8		339				3		<b>548</b>
KAP12901			2					2						<b>4</b>
KAW04405		132	8	1		6		116					1	<b>264</b>
KAW04410											1			<b>1</b>
KAW04411											1			<b>1</b>
KIG16801			4			1							1	<b>6</b>
KIH19101	1		35			38		1183			2	1	48	<b>1308</b>
KIN02601								4			2		1	<b>7</b>
KIN04310											1			<b>1</b>
KIW34201										1				<b>1</b>
KIW34202								1			1			<b>2</b>
KKI23701			1									1		<b>2</b>
KPA12401		1	4	6				53						<b>64</b>
KRG24101			1	2		1								<b>4</b>
KTK23901											1			<b>1</b>
KUK22401			4			4		18						<b>26</b>
KUR33601											1			<b>1</b>

Gas Gate	AGCL	BOPE	CTCT	EDNZ	EGAS	EGLT	GEND	GENG	GEOL	GMTH	GNGC	GNVG	MEEN	Grand Total
LAB20201			11	70		4		34				1		<b>120</b>
LNB24301			84	55		2		112			4	6	17	<b>280</b>
LVN24401			2168	123	45	85		252	41		5	53	120	<b>2892</b>
MGK05401										1				<b>1</b>
MMU08001	1	402	83		3	125	2	2967		2	3	14	333	<b>3935</b>
MNA23402			36	37	1	3		168						<b>245</b>
MRV16301			1					1						<b>2</b>
MRV16302			28			23		554				1	59	<b>665</b>
MSD01801			1											<b>1</b>
MSD01802											1			<b>1</b>
MTG17301						1		37					1	<b>39</b>
MTN23801			60	264		8		129			1	3		<b>465</b>
MTP20601								5						<b>5</b>
MUT19001											1			<b>1</b>
NGW14501			5			2		131					6	<b>144</b>
NPL12101		260	1197	2279	28	206	1	6522			9	41		<b>10543</b>
NPS00530			1											<b>1</b>
OAK18601								1						<b>1</b>
OKA13201			11	7		1		40						<b>59</b>
OKS32801						1							1	<b>2</b>
OKU16701		6	33	51				117				1		<b>208</b>
OPK13001		1	28	13				124						<b>166</b>
OPO32001		45	5			4	1	54					1	<b>110</b>

Gas Gate	AGCL	BOPE	CTCT	EDNZ	EGAS	EGLT	GEND	GENG	GEOL	GMTH	GNGC	GNVG	MEEN	Grand Total
ORD24701			1	1		1								<b>3</b>
OTA22601			43	3		21		301				2	6	<b>376</b>
OTB00301			1											<b>1</b>
OTO14101			3			14		154						<b>171</b>
PAH23201						1		6						<b>7</b>
PAP06603	6		14		1		1	7					40	<b>69</b>
PAP06610	380		4365	9	63	171	1	495		1	51	70	3389	<b>8995</b>
PAU20101			471	48	5	183		2310			2	2	95	<b>3116</b>
PGH15901			1					1						<b>2</b>
PGU13101								15						<b>15</b>
PHT04901			48			9		28			1			<b>86</b>
PIR31101								39					5	<b>44</b>
PLN24201	1		5831	2573	39	291		4090	7		21	1030	647	<b>14530</b>
PPA33201								8					1	<b>9</b>
PTA20901			18	28		3		138			1	1		<b>189</b>
PTR32601		1	9			21		290			1		13	<b>335</b>
PUK04201	9		68	1	5	9		13				7	55	<b>167</b>
RAG33401											1			<b>1</b>
RAM15201			1								2			<b>3</b>
ROT08101		256	248	1	2	184	1	2615			11	34	434	<b>3786</b>
RPR30801			2			1		19					1	<b>23</b>
STR10201		7	100	103		24		651				3		<b>888</b>
TAC31001											1			<b>1</b>

Gas Gate	AGCL	BOPE	CTCT	EDNZ	EGAS	EGLT	GEND	GENG	GEOL	GMTH	GNGC	GNVG	MEEN	Grand Total
TAT16401										1				<b>1</b>
TAU07001		106	177	2	1	154		1341			1	2	166	<b>1950</b>
TCC00201			1											<b>1</b>
THO22701			2			2		11						<b>15</b>
TIR33501			1											<b>1</b>
TIR33502		1				12		58					5	<b>76</b>
TKN17001			1			8		156			1	1		<b>167</b>
TKP05101												1		<b>1</b>
TKR19701		4	33		1	50		881			1	1	38	<b>1009</b>
TKS17401			1			1	1	14		1	2			<b>20</b>
TPK33301		26	5			23		528			1		21	<b>604</b>
TRC02003			1											<b>1</b>
TRG07701		567	106	3		196	1	2916			5	13	254	<b>4061</b>
TTK30601		2						4						<b>6</b>
TUK06501	1		6					1			2	1	1	<b>12</b>
TWA35610			9015	56	218	578	2	8492	3		30	6910	2276	<b>27580</b>
WAG21501			448	6373		67		2169		1	4	65		<b>9127</b>
WAK22801			174	13		74		1170					12	<b>1443</b>
WEL18301			1			2		17					2	<b>22</b>
WHG07501			63	2	1	100		895			5	2	92	<b>1160</b>
WHK32101		240	8			40		161			3		8	<b>460</b>
WKE19201											1			<b>1</b>
WRK18901			20			11		149			2		62	<b>244</b>

Gas Gate	AGCL	BOPE	CTCT	EDNZ	EGAS	EGLT	GEND	GENG	GEOL	GMTH	GNGC	GNVG	MEEN	Grand Total
WST03610	2808		22102	20	386	682	2	4317		13	77	342	21510	<b>52259</b>
WTA16501			1			1		34		1		3	1	<b>41</b>
WTG06910			529	8	71	124	1	4402	2		4	173	475	<b>5789</b>
WTK33901	12		222			11	1	1232				6	731	<b>2215</b>
WTK33902	30		105		3	7		160				1	201	<b>507</b>
WTR12001		11	129	311		14		664			8	7		<b>1144</b>
WTT20301											1			<b>1</b>
WVY23601			2				1	4						<b>7</b>
<b>Grand Total</b>	<b>4329</b>	<b>2105</b>	<b>64043</b>	<b>14001</b>	<b>1293</b>	<b>5388</b>	<b>27</b>	<b>102713</b>	<b>117</b>	<b>23</b>	<b>397</b>	<b>10203</b>	<b>43629</b>	<b>248268</b>