

Gas Registry statistics – August 2010

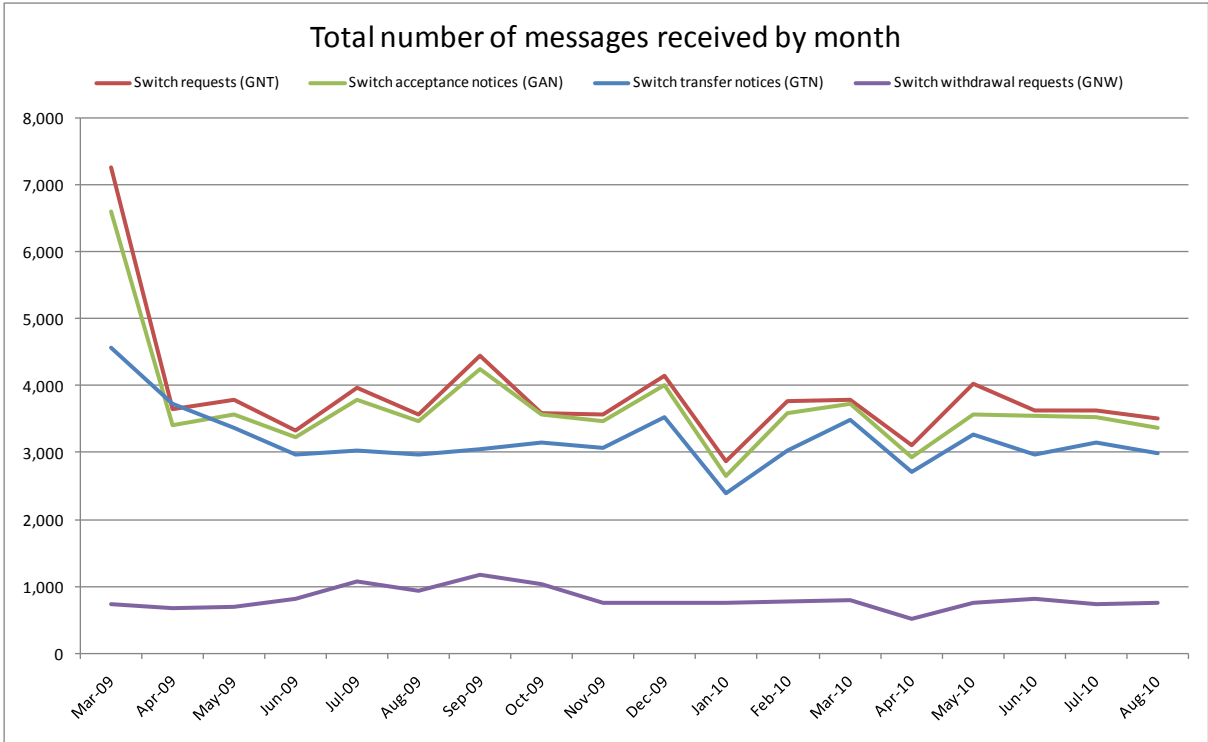
The following report provides statistics and charts illustrating gas registry usage, switching volumes and breakdowns of retailer, distributor and meter owner market shares. The information is provided in accordance with version 1.2 of the Determinations by the Industry Body (Gas Industry Co) under the Gas (Switching Arrangements) Rules 2008, dated 20 February 2009.

Summary registry statistics – August 2010

ICP enquiries processed in month (Online)	29,734
ICP enquiries processed in month (Offline)	4,353,311
Total ICP enquiries processed in month	4,383,045
ICPs added to the Registry in month	450
ICPs changed in month	41,309
ICPs decommissioned in month	15
Valid standard switch requests (GNT-S) received in month	1,980
Valid move switch requests (GNT-SM) received in month	1,523
Valid switch requests (GNT) received in month	3,503
Valid switch acceptance notices (GAN) received in month	3,372
Valid switch transfer notices (GTN) received in month	2,987
Valid switch withdrawal requests (GNW) received in month	749
Valid switch withdrawal acceptances (GAW-A) received in month	733
Valid switch withdrawal rejections (GAW-R) received in month	13
Valid switch reading renegotiation requests (GNC) received in month	65
Valid switch reading renegotiation acceptances (GAC-A) received in month	65
Valid switch reading renegotiation rejections (GAC-R) received in month	3

Note: A switch transfer notice (GTN) is the last stage required to complete the switching process. This statistic indicates the number of switches completed in the month.

Switching activity – historical



ICPs by status – August 2010

The meaning of the ICP status codes are as follows:

ACTC—Active contracted (gas is able to flow and the customer has a contract with a retailer)

ACTV—Active vacant (gas is able to flow and the premises is vacant)

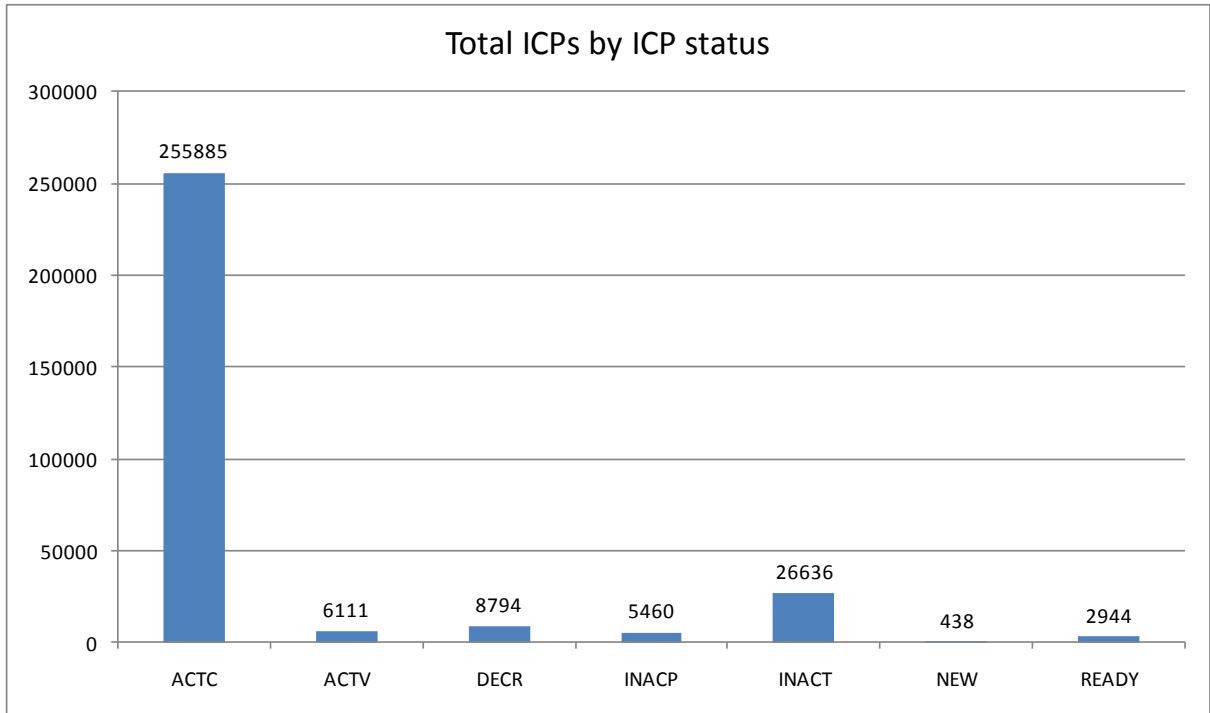
DECR—Decommissioned

INACP—Inactive permanent (gas unable to flow due to a permanent disconnection)

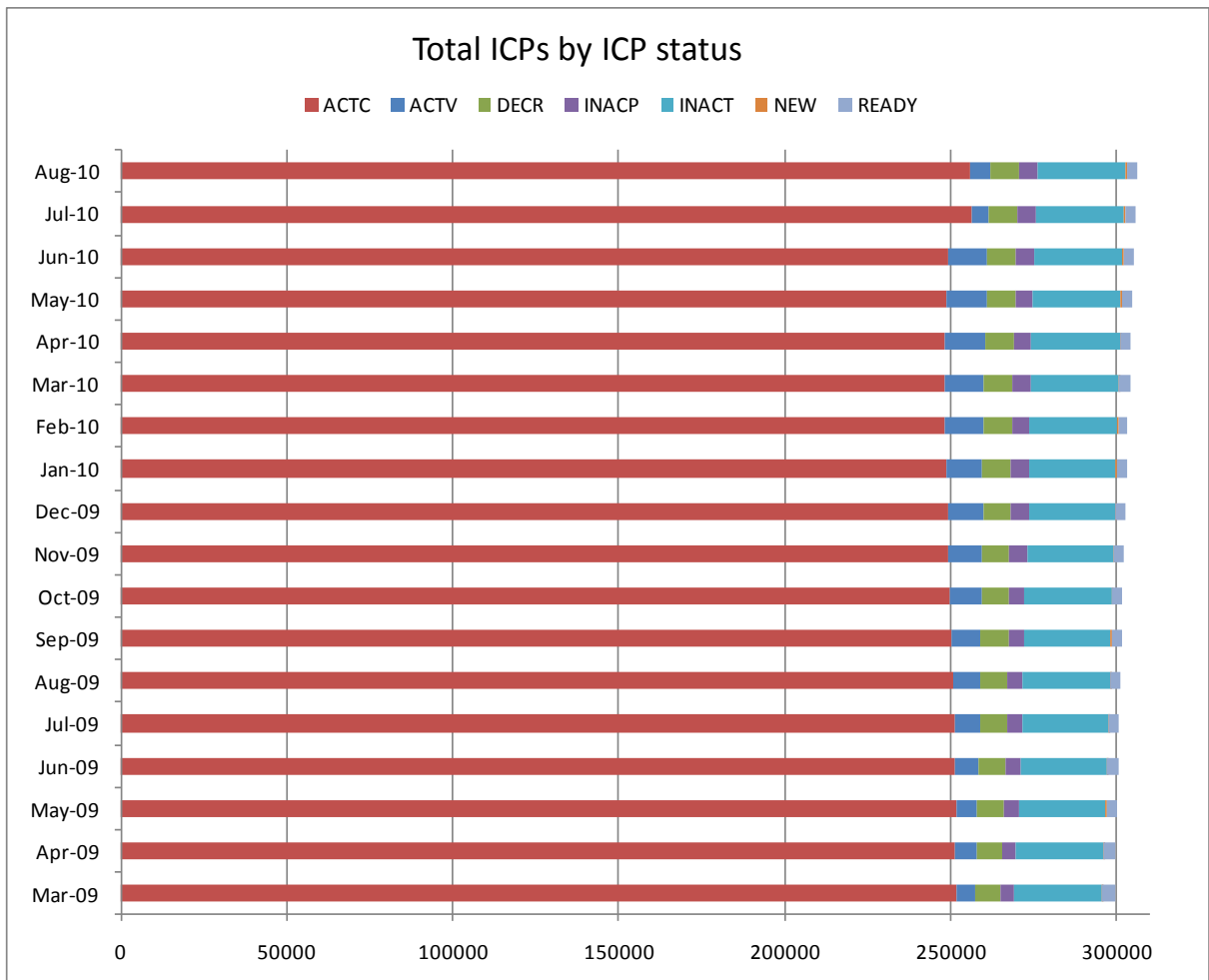
INACT—Gas unable to flow due to a temporary disconnection

NEW—Newly created ICP, gas not yet able to flow

READY—New ICP, gas able to flow, awaiting uplift by retailer

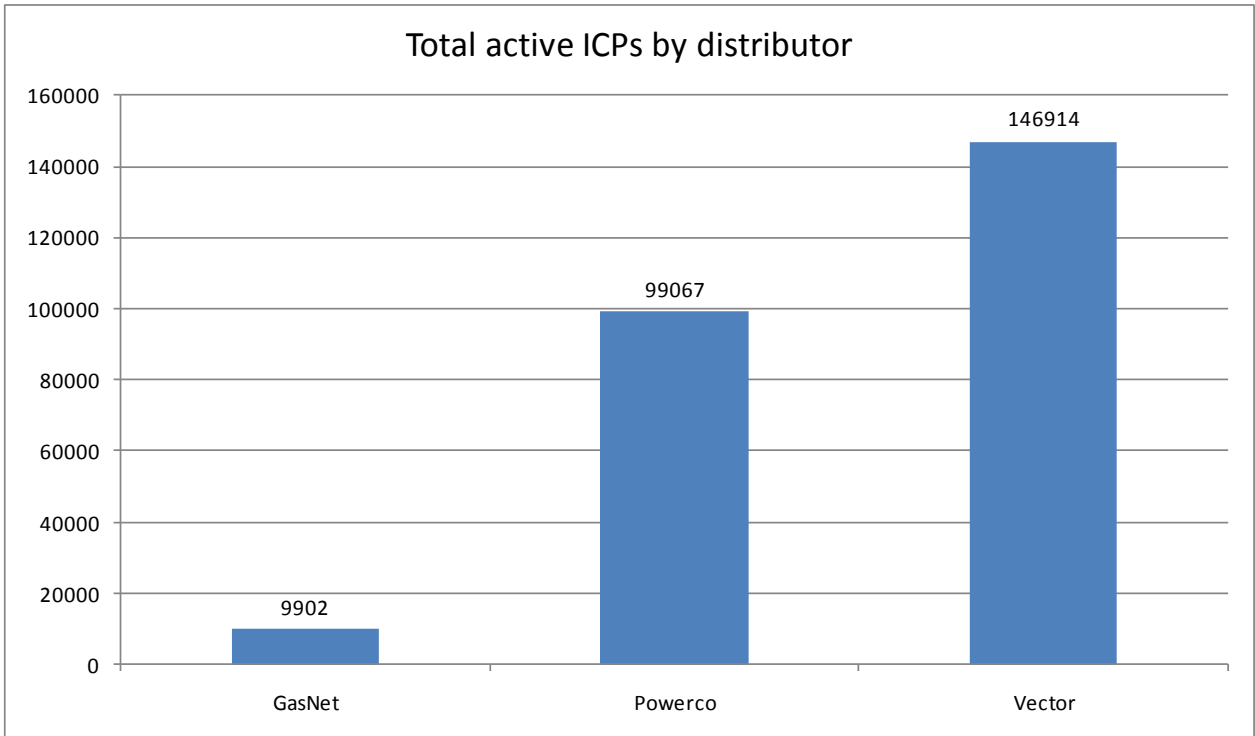
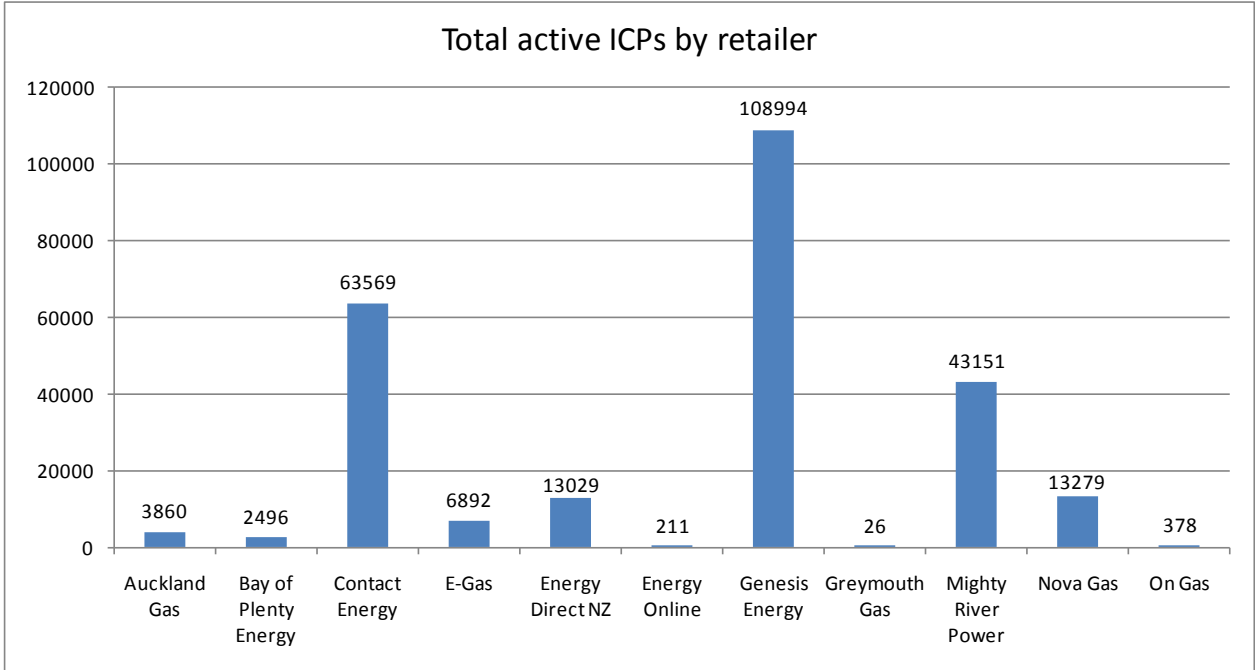


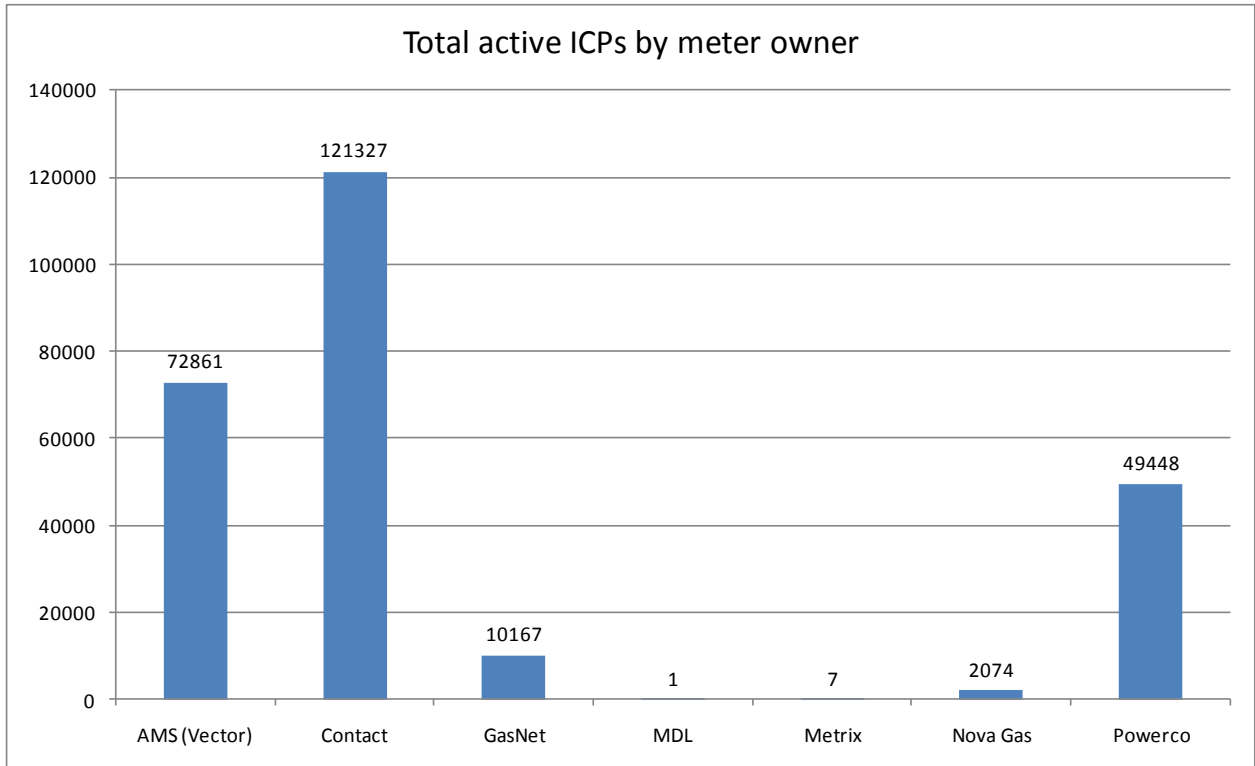
ICPs by status – historical



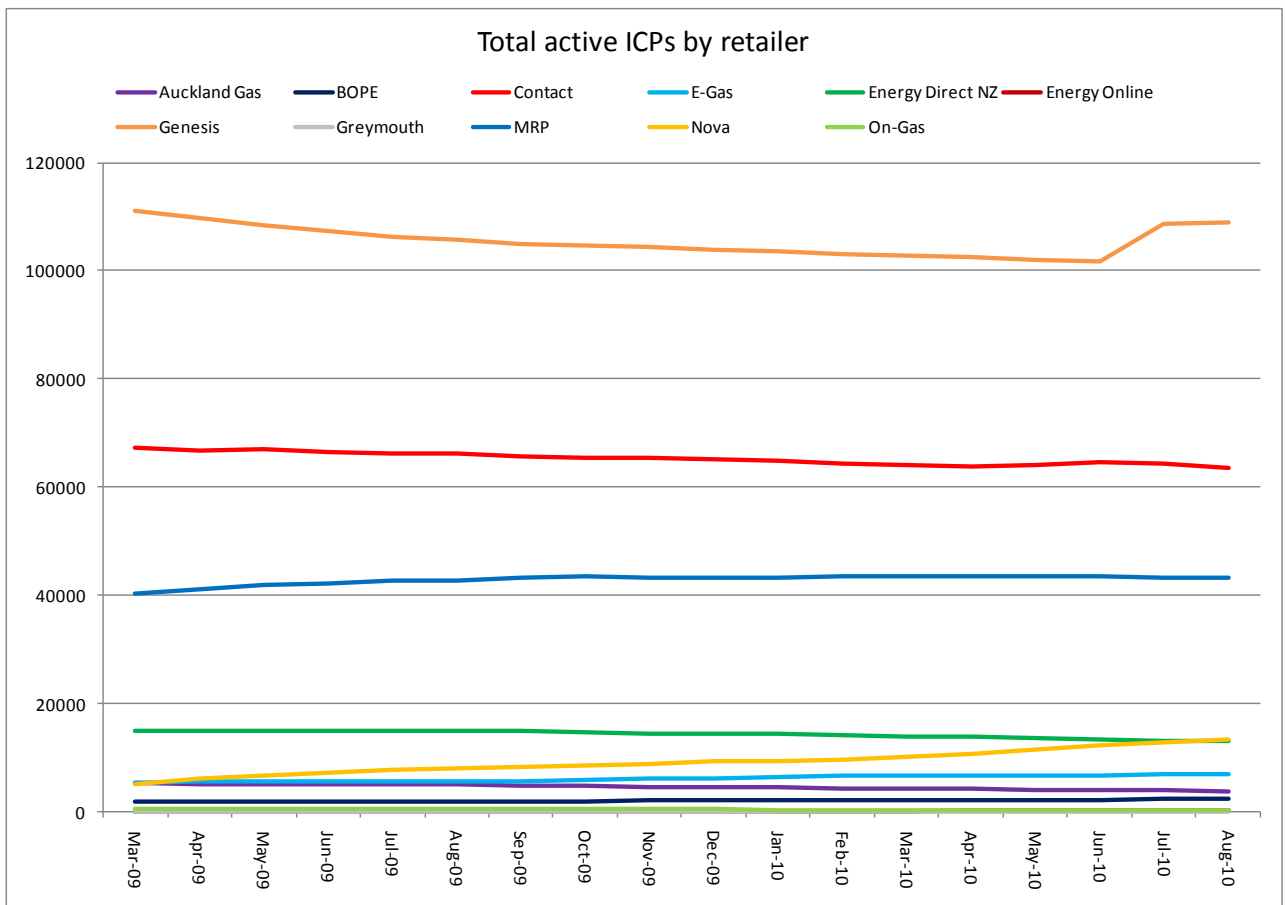
Market shares – August 2010

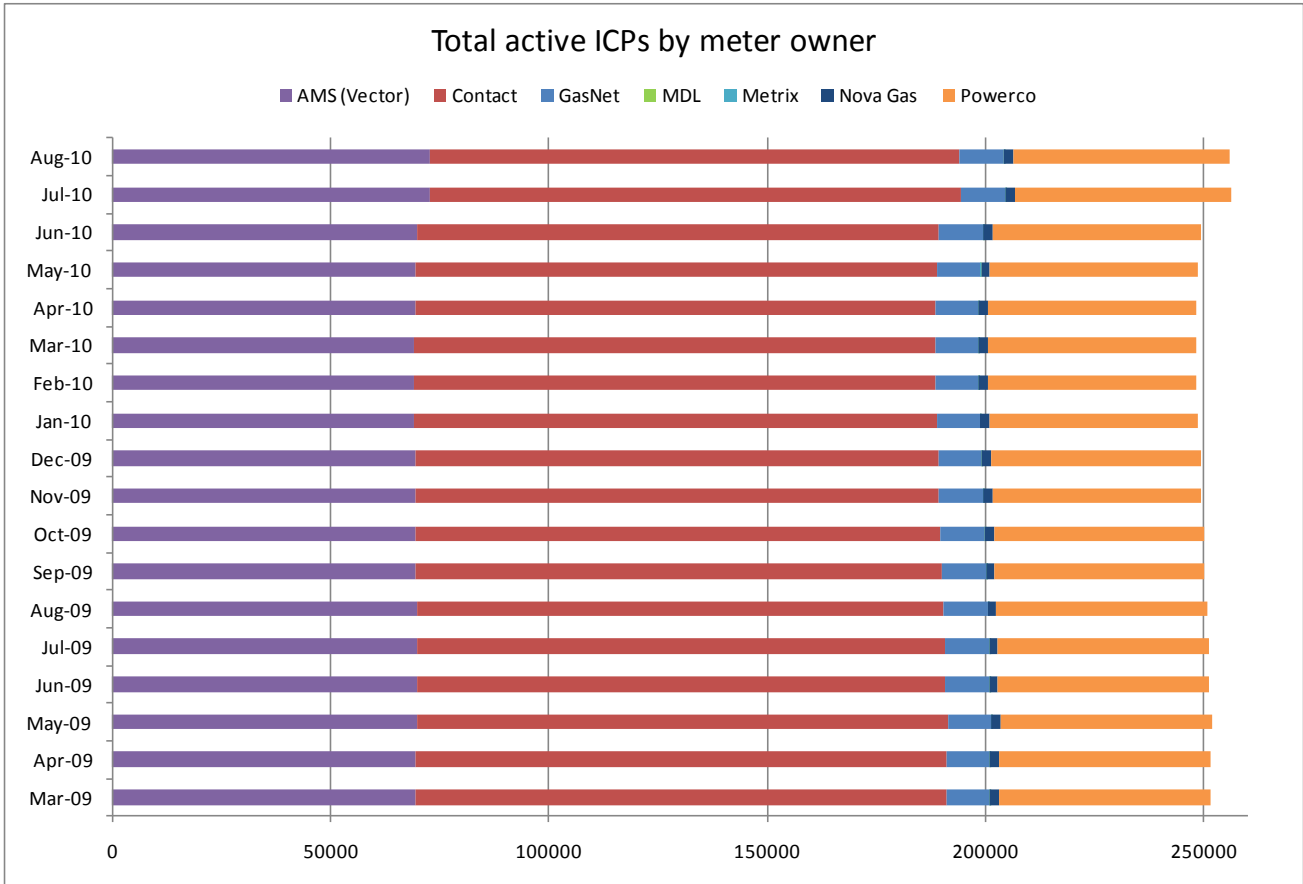
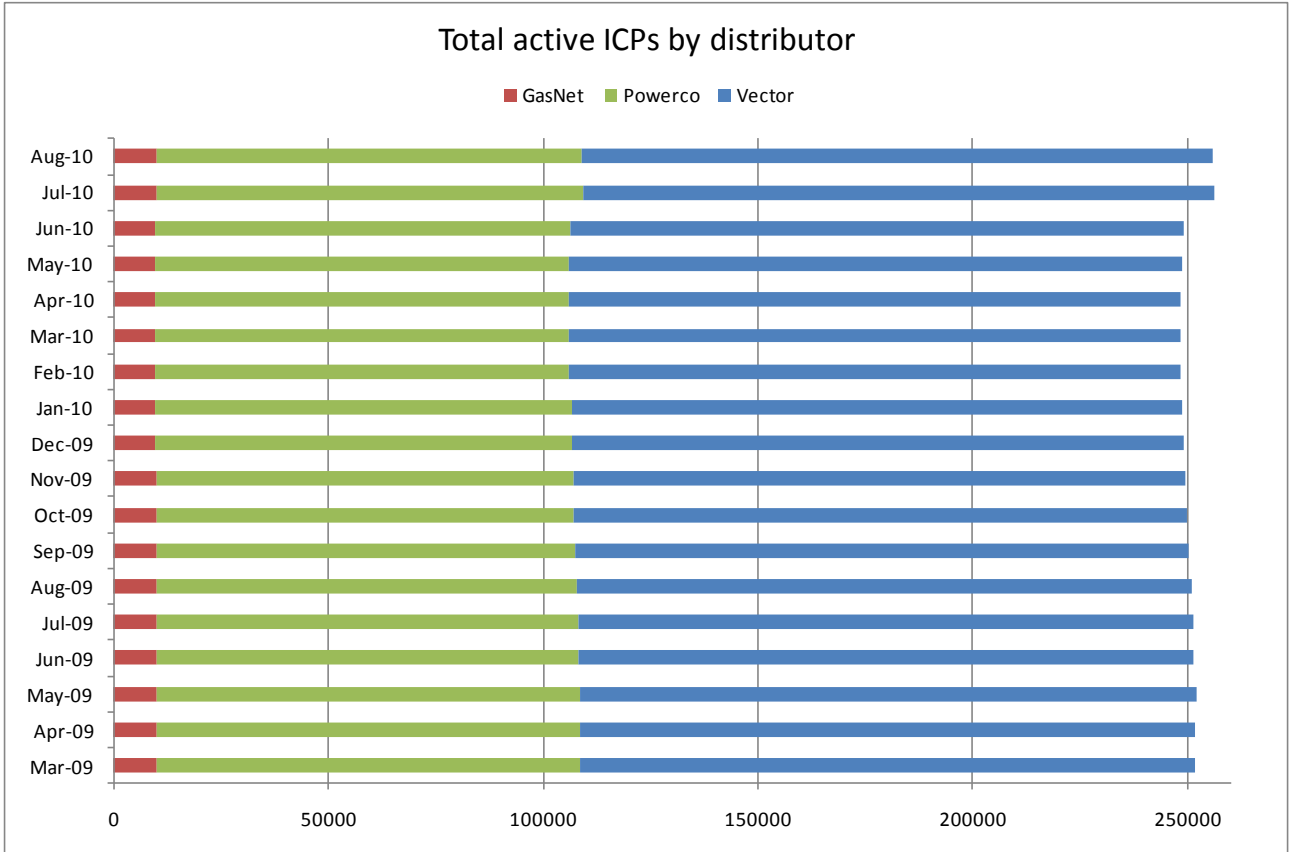
The following charts show the distribution of active-contracted ICPs by retailer, distribution company and meter owner respectively.





Market shares – historical





Active ICPs by gas gate and responsible retailer – August 2010

The following table shows the distribution of active ICPs by gas gate, and the distribution by retailer at each gas gate.

The responsible retailer codes are as follows:

AGCL—Auckland Gas Company

BOPE—Bay of Plenty Energy

CTCT—Contact Energy

EGAS—E-Gas 2000

EGLT—E-Gas Ltd

EDNZ—Energy Direct NZ (Wanganui Gas)

GENG—Genesis Energy

GEND—Genesis Energy

GEOL—Energy Online

GMTH—Greymouth Gas

MEEN—Mighty River Power

GNVG—Nova Gas

GNGC—OnGas (Vector)

Gas Gate	AGCL	BOPE	CTCT	EDNZ	EGAS	EGLT	GEND	GENG	GEOL	GMTH	GNGC	GNVG	MEEN	Total
ALF15501											1			1
ASH34301			62	32		9		45				50	9	207
BAL08201										1				1
BAL09626										1				1
BEL24510			1786	27	250	455		17322	3		11	1164	1506	22524
BMC17901	138		447	2	12	47	1	289			3	37	712	1688
BRO36301											1			1
CAM17201	1		62			42		1482				1	176	1764
DAN05001			79		7	14		9			1	2		112
DRU15101	1		14		1	3		3			2	4	3	31
DRU15102	1		4			1		7			4	2	4	23
EGC30701			1											1
EGC30702		2	1			1		3						7
ELM12301		2	51	39		4		242			3	1		342
FLD03001			567	302	9	51		460			1	284	52	1726
FLH21901			1	3				2						6
FOX22101			222	12	6	7	1	19	5		1	14	18	305
GIS07810			862	230	1	154	3	2146			3	6		3405
GLB03401											1			1
HAR11801								1			4			5
HEN74101	827		7144	10	96	235	1	4859		1	19	138	7397	20727
HPS02993							1							1
HRU16101						1	1	1				1		4

Gas Gate	AGCL	BOPE	CTCT	EDNZ	EGAS	EGLT	GEND	GENG	GEOL	GMTH	GNGC	GNVG	MEEN	Total
HST05210			3160	305	96	283	2	344	127		6	51		4374
HTK08301			1					14					4	19
HTL16601			3			7	1	101			3		4	119
HTV11301	4	8	1343		2	401	2	22716			52	110	2351	26989
HUN15301	1		1								2			4
HWA20801		48	443	334		66		1937			1	10		2839
IGW11901		17	74	116		9		343				3		562
KAP12901			2					2						4
KAW04405		132	10	1		6		119						268
KAW04410											1			1
KAW04411											1			1
KIG16801			4			1							1	6
KIH19101	1		46			38	1	1242			1	1	47	1377
KIN02601								4			2		1	7
KIN04310											1			1
KIW34201										1				1
KIW34202								1			1			2
KKI23701			1									1		2
KPA12401		1	6	6				53						66
KRG24101			1	2		1								4
KTK23901											1			1
KUK22401			6			4		18						28
KUR33601											1			1

Gas Gate	AGCL	BOPE	CTCT	EDNZ	EGAS	EGLT	GEND	GENG	GEOL	GMTH	GNGC	GNVG	MEEN	Total
LAB20201			9	67		5		33				1	1	116
LCF20010			1											1
LNB24301			57	44		3		107			4	74	11	300
LVN24401			2150	126	53	93		298	64		5	53	103	2945
MGK05401										1				1
MMU08001	1	405	107		3	130	2	3110		2	3	14	343	4120
MNA23402			40	35	1	3		177						256
MRV16301			1											1
MRV16302			29			23		560				2	78	692
MSD01801			1											1
MSD01802											1			1
MTG17301								40					1	41
MTN23801			62	256		9		144			2	3		476
MTP20601								6						6
MUT19001											1			1
NGW14501			9			2		137					7	155
NPL12101		557	1157	2182	30	200	1	6657			6	45		10835
NPS00530			1											1
OAK18601								1						1
OKA13201		1	10	6		1		42						60
OKS32801						1							1	2
OKU16701		9	31	50				126				1		217
OPK13001		2	31	14				130						177

Gas Gate	AGCL	BOPE	CTCT	EDNZ	EGAS	EGLT	GEND	GENG	GEOL	GMTH	GNGC	GNVG	MEEN	Total
OPO32001		49	4			4	1	54						112
ORD24701			1	1		1								3
OTA22601			47	3		21		312				2	6	391
OTB00301			1											1
OTO14101			5			14		161						180
PAH23101								6						6
PAH23201						1		1						2
PAP06603	3		28		1		1	14				2	53	102
PAP06610	343		4391	11	62	165	1	616		1	53	114	3324	9081
PAU20101			493	49	10	187		2401			2	2	92	3236
PGH15901			1											1
PGU13101								14						14
PHT04901			44			12		33			1			90
PIR31101								44					5	49
PLN24201			4674	1890	47	282		4019	4		21	3498	448	14883
PPA33201			1					7					1	9
PTA20901		3	18	27		2		144			1	1		196
PTR32601		3	13			21		288			1		13	339
PUK04201	7		67	1	4	10		14				12	56	171
RAG33401												1		1
RAM15201			1								2			3
ROT08101		256	271	1	1	186	1	2744			11	37	435	3943
RPR30801			2			1		20					1	24

Gas Gate	AGCL	BOPE	CTCT	EDNZ	EGAS	EGLT	GEND	GENG	GEOL	GMTH	GNGC	GNVG	MEEN	Total
STR10201		12	94	101		24		679				3		913
TAC31001											1			1
TAT16401										1				1
TAU07001		104	222	2	1	156		1376			1	2	174	2038
TCC00201			1											1
THO22701			2			2		11						15
TIR33501			1											1
TIR33502		2	1			12		55					7	77
TKN17001			1			8		162			1	1		173
TKP05101												1		1
TKR19701		5	41		1	49		899			1	2	44	1042
TKS17401			1			1	1	15		1	2			21
TPK33301		27	6			24	1	537					22	617
TRC02003			1											1
TRG07701		578	119	3		210		3066			5	13	263	4257
TTK30601		2						4						6
TUK06501	1		6					1			2	1	1	12
TWA35610			8867	70	253	606	1	9145	6		30	6649	2314	27941
WAG21501			463	6319		75		2368		2	2	74		9303
WAK22801			184	13		76		1192					10	1475
WEL18301			1			2		20					2	25
WHG07501			69	2	1	99		946			5	2	86	1210
WHK32101		243	7			39		158			3		8	458

Gas Gate	AGCL	BOPE	CTCT	EDNZ	EGAS	EGLT	GEND	GENG	GEOL	GMTH	GNGC	GNVG	MEEN	Total
WKE19201											1			1
WRK18901			19			10		155			2	2	67	255
WST03610	2492		22245	19	383	704	4	5241		13	74	570	21462	53207
WTA16501						1		38		1		3		43
WTG06910			550	9	88	121	1	4506	2		3	187	521	5988
WTK33901	11		256			13	1	1288				9	720	2298
WTK33902	28		122		3	7		185				5	186	536
WTR12001		28	126	307		14		668			2	13		1158
WTT20301											1			1
WVY23601			2				1	4						7
Total	3860	2496	63569	13029	1422	5470	31	108963	211	26	378	13279	43151	255885