

Gas Registry statistics – April 2010

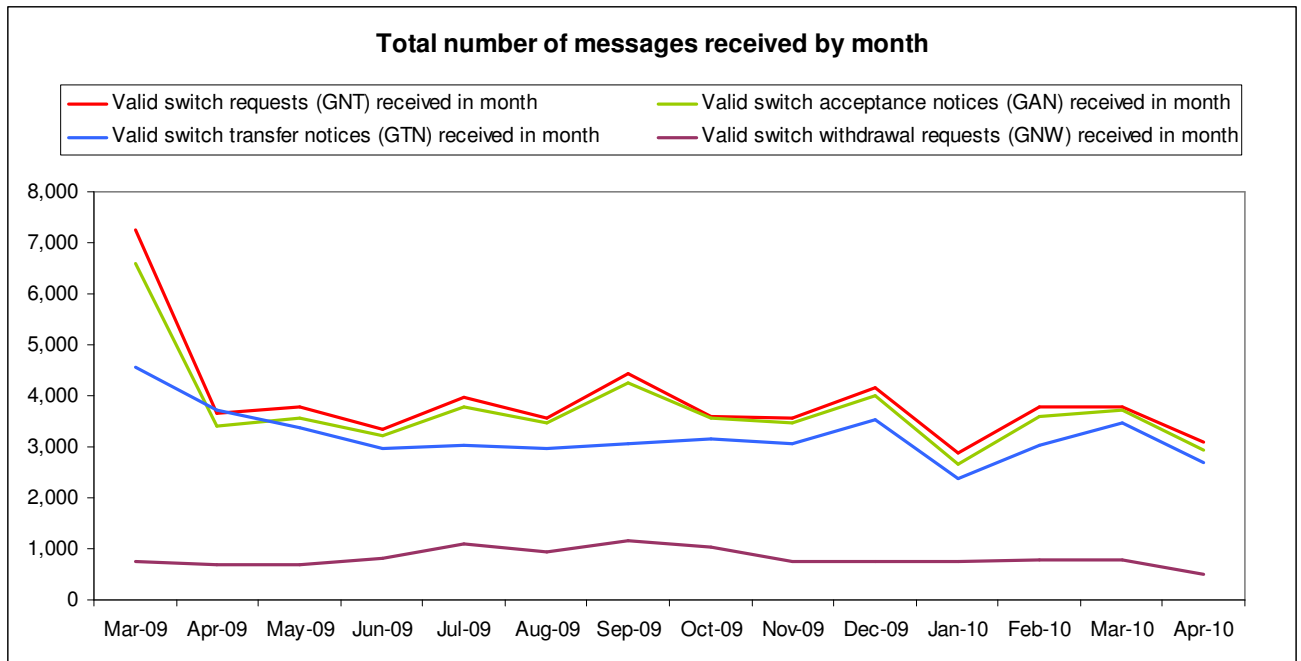
The following report provides statistics and charts illustrating gas registry usage, switching volumes and breakdowns of retailer, distributor and meter owner market shares. The information is provided in accordance with version 1.2 of the Determinations by the Industry Body (Gas Industry Co) under the Gas (Switching Arrangements) Rules 2008, dated 20 February 2009.

Summary registry statistics

ICP enquiries processed in month (Online)	25,527
ICP enquiries processed in month (Offline)	3,138,851
Total ICP enquiries processed in month	3,164,378
ICPs added to the Registry in month	403
ICPs changed in month	1,291
ICPs decommissioned in month	15
Valid standard switch requests (GNT-S) received in month	1,677
Valid move switch requests (GNT-SM) received in month	1,432
Valid switch requests (GNT) received in month	3,109
Valid switch acceptance notices (GAN) received in month	2,929
Valid switch transfer notices (GTN) received in month	2,702
Valid switch withdrawal requests (GNW) received in month	509
Valid switch withdrawal acceptances (GAW-A) received in month	522
Valid switch withdrawal rejections (GAW-R) received in month	13
Valid switch reading renegotiation requests (GNC) received in month	53
Valid switch reading renegotiation acceptances (GAC-A) received in month	50
Valid switch reading renegotiation rejections (GAC-R) received in month	6

Note: A switch transfer notice (GTN) is the last stage required to complete the switching process. This statistic indicates the number of switches completed in the month.

Switching activity



ICPs by status – April 2010

The meaning of the ICP status codes are as follows:

ACTC—Active contracted (gas is able to flow and the customer has a contract with a retailer)

ACTV—Active vacant (gas is able to flow and the premises is vacant)

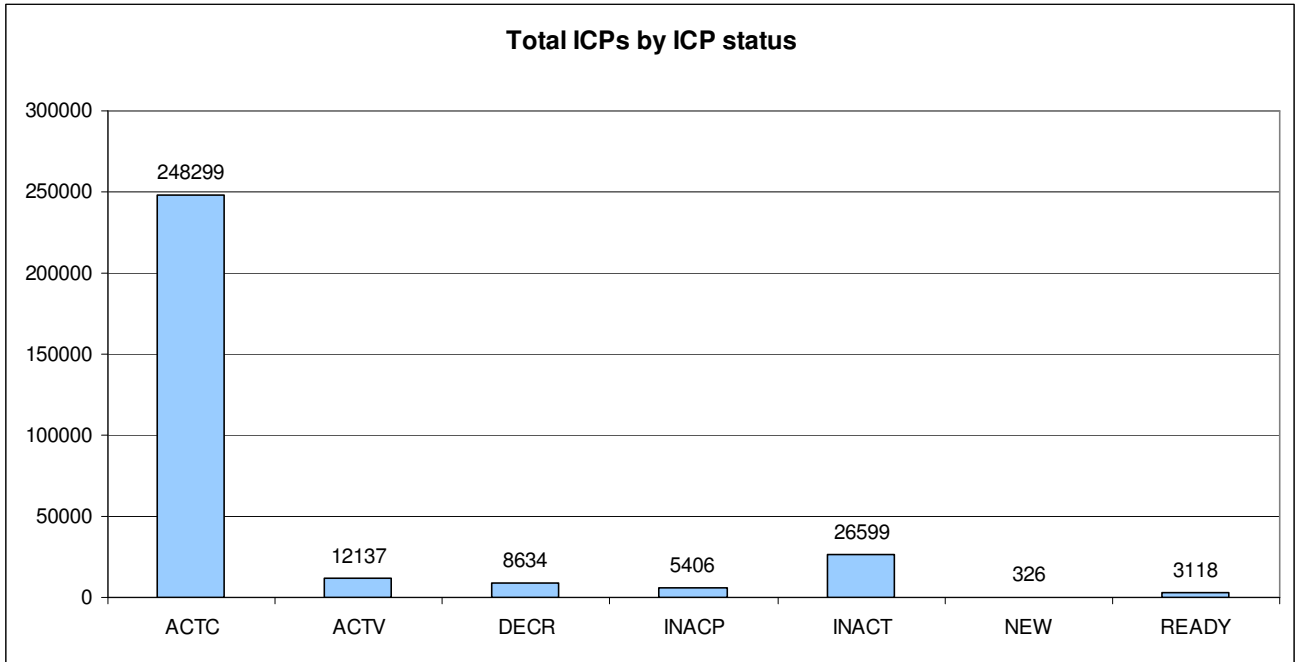
DECR—Decommissioned

INACP—Inactive permanent (gas unable to flow due to a permanent disconnection)

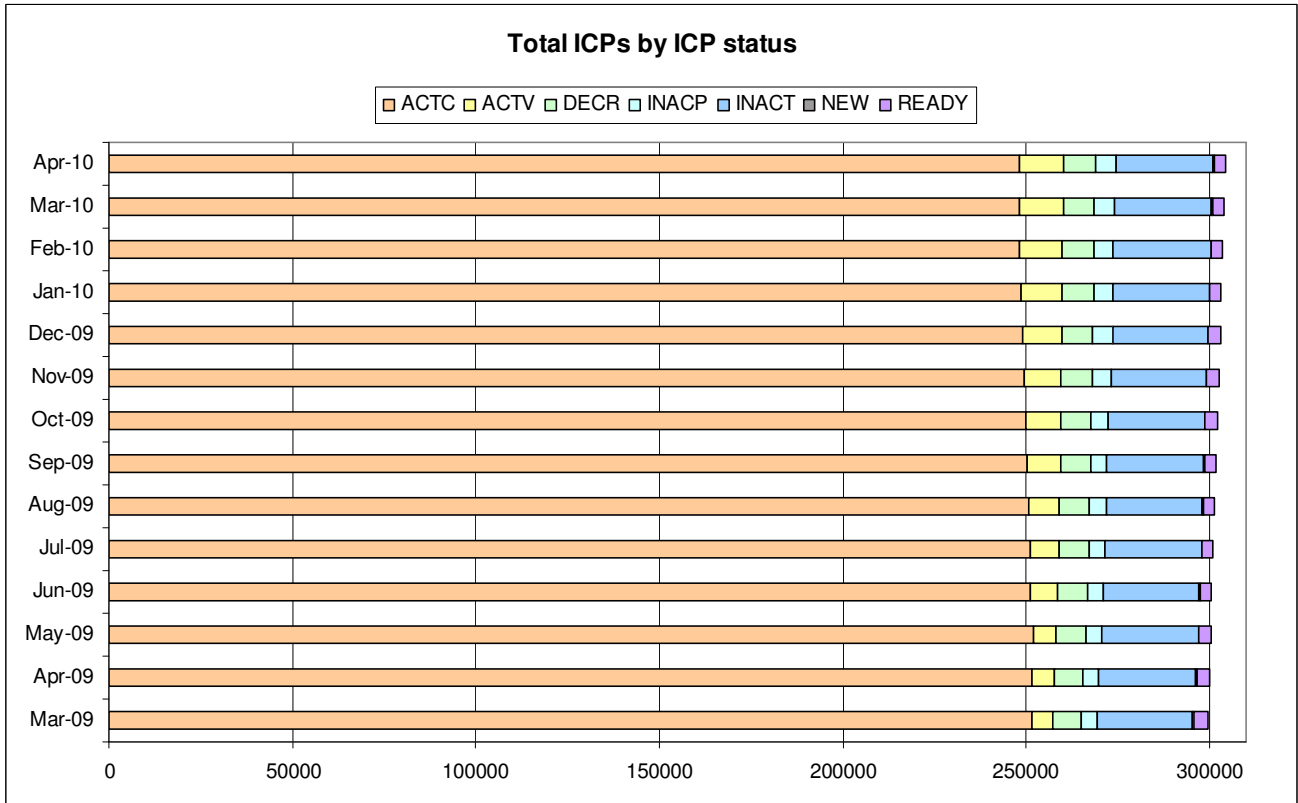
INACT—Gas unable to flow due to a temporary disconnection

NEW—Newly created ICP, gas not yet able to flow

READY—New ICP, gas able to flow, awaiting uplift by retailer

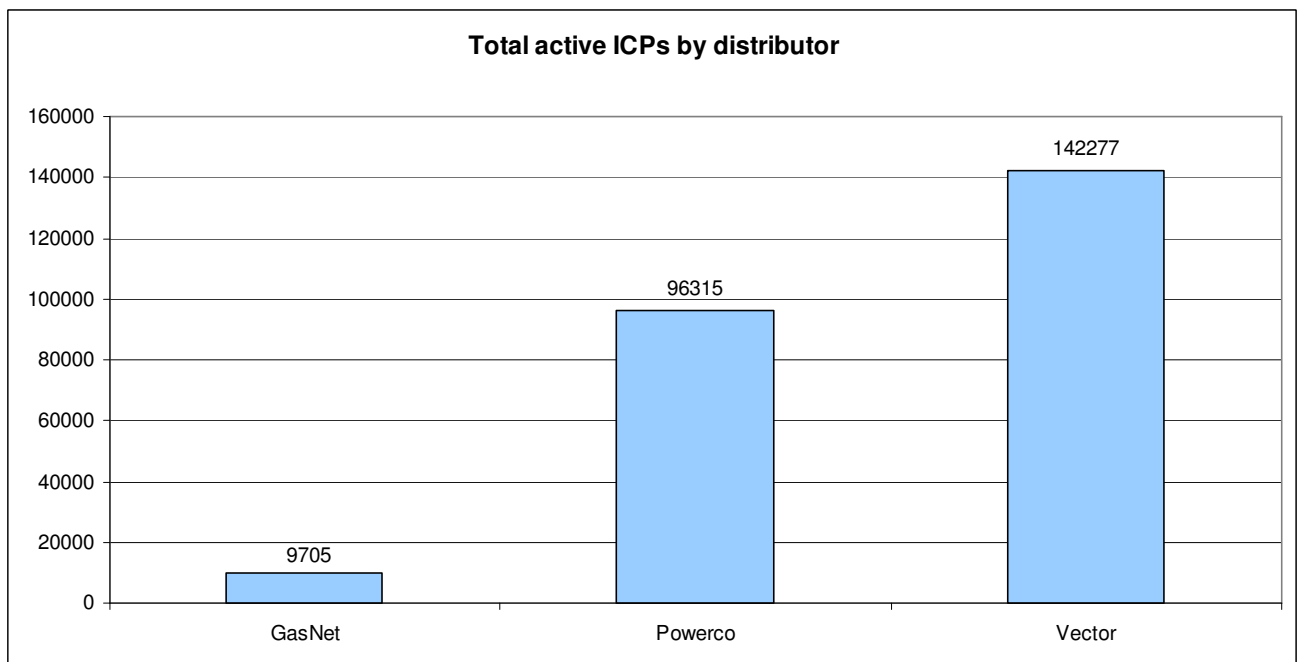
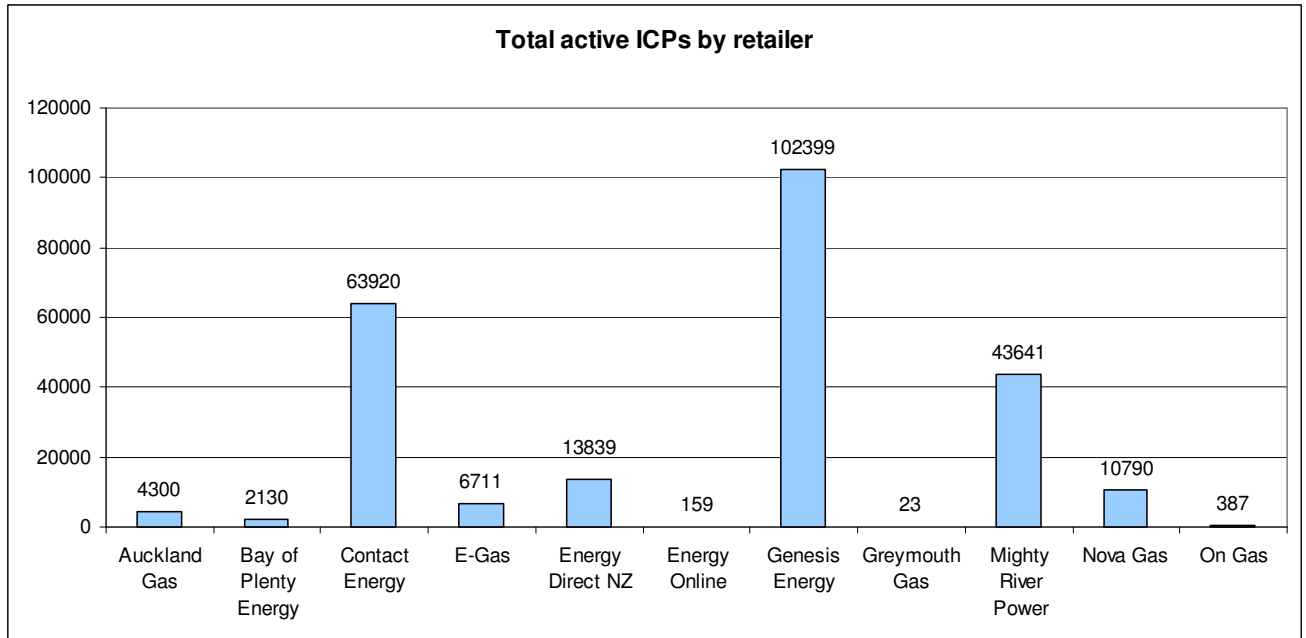


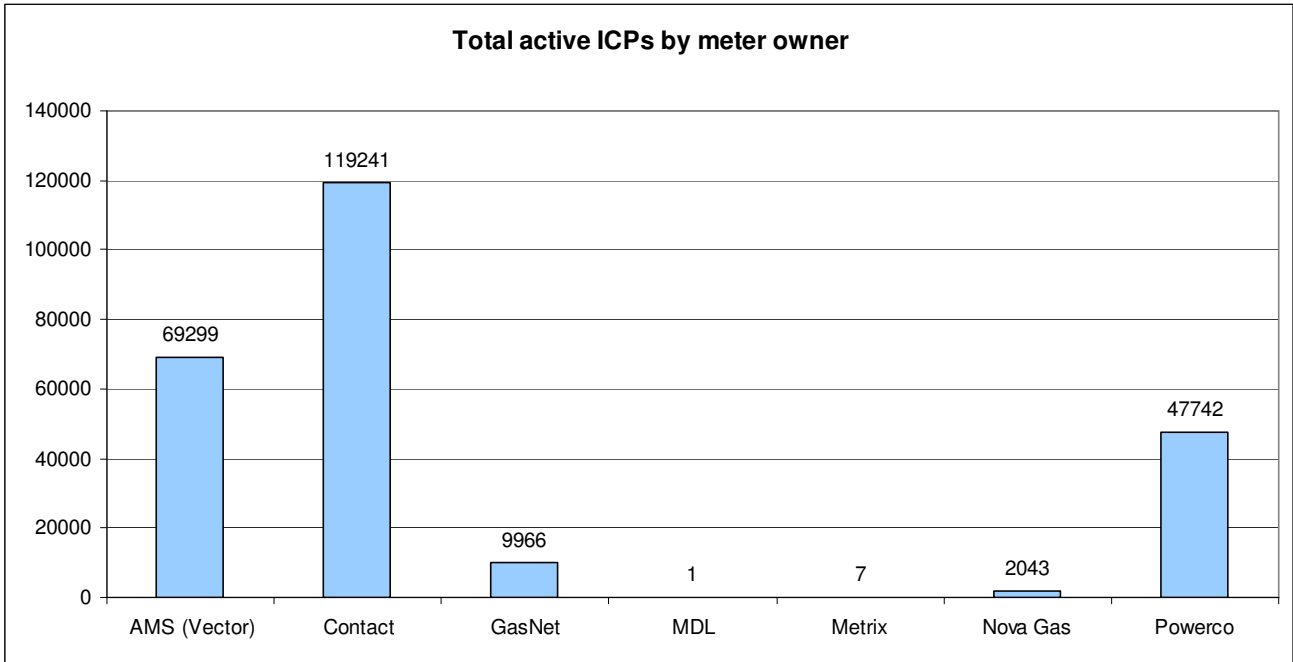
ICPs by status – historical



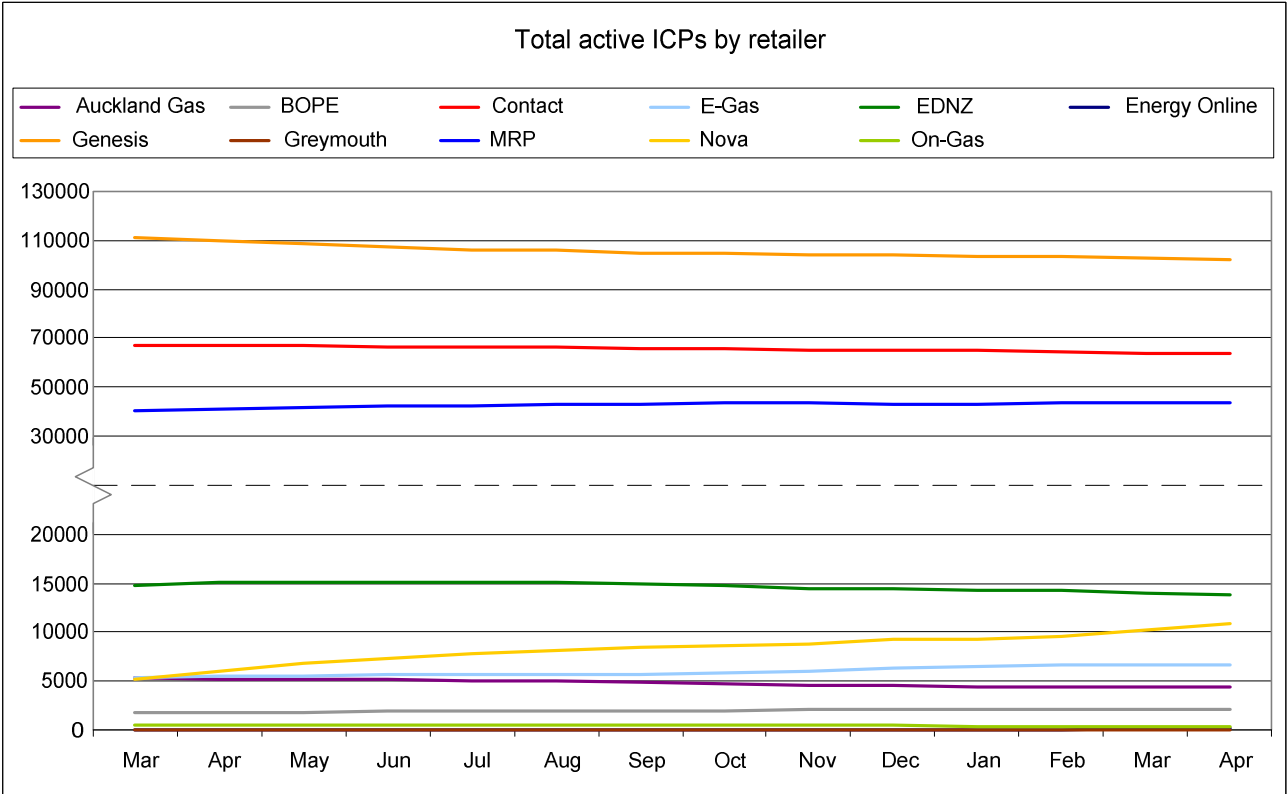
Market shares – April 2010

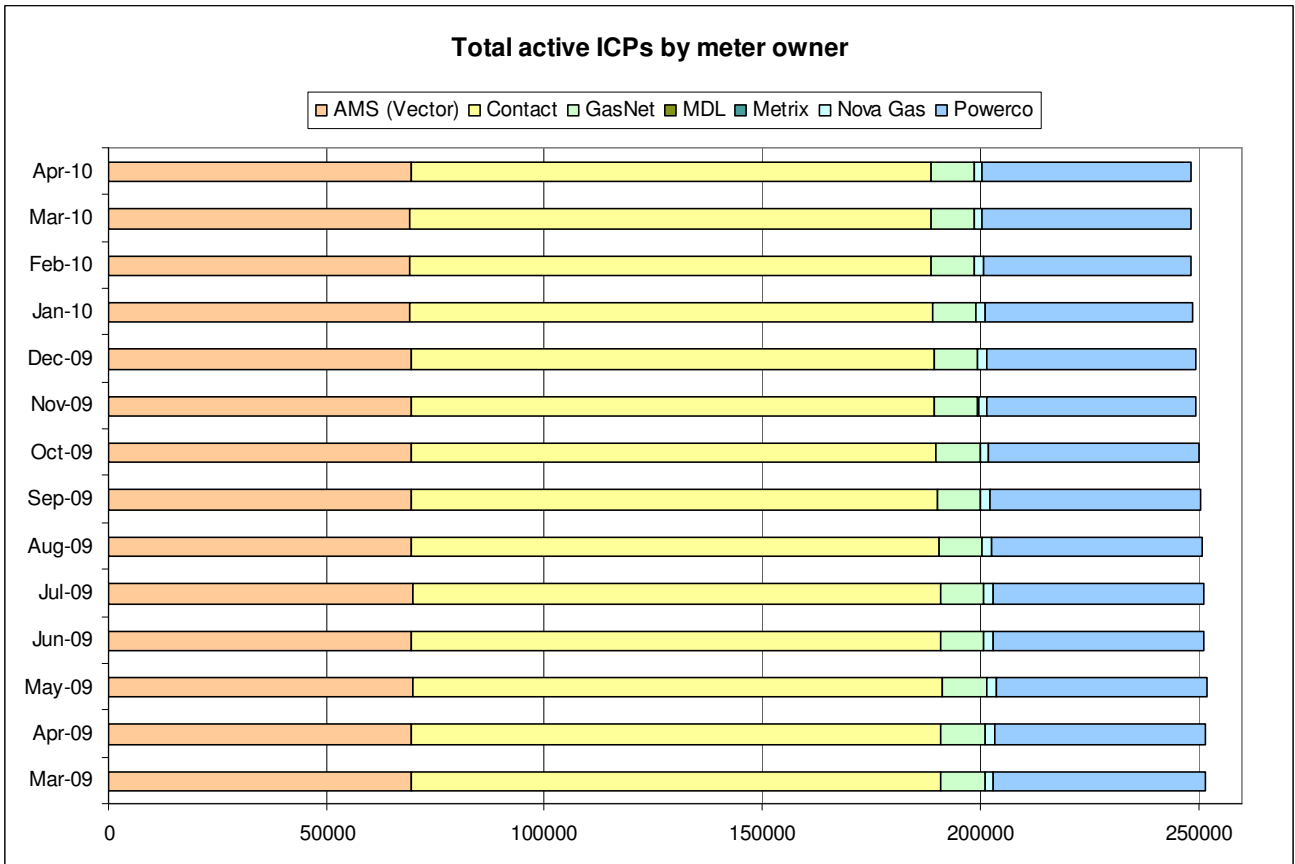
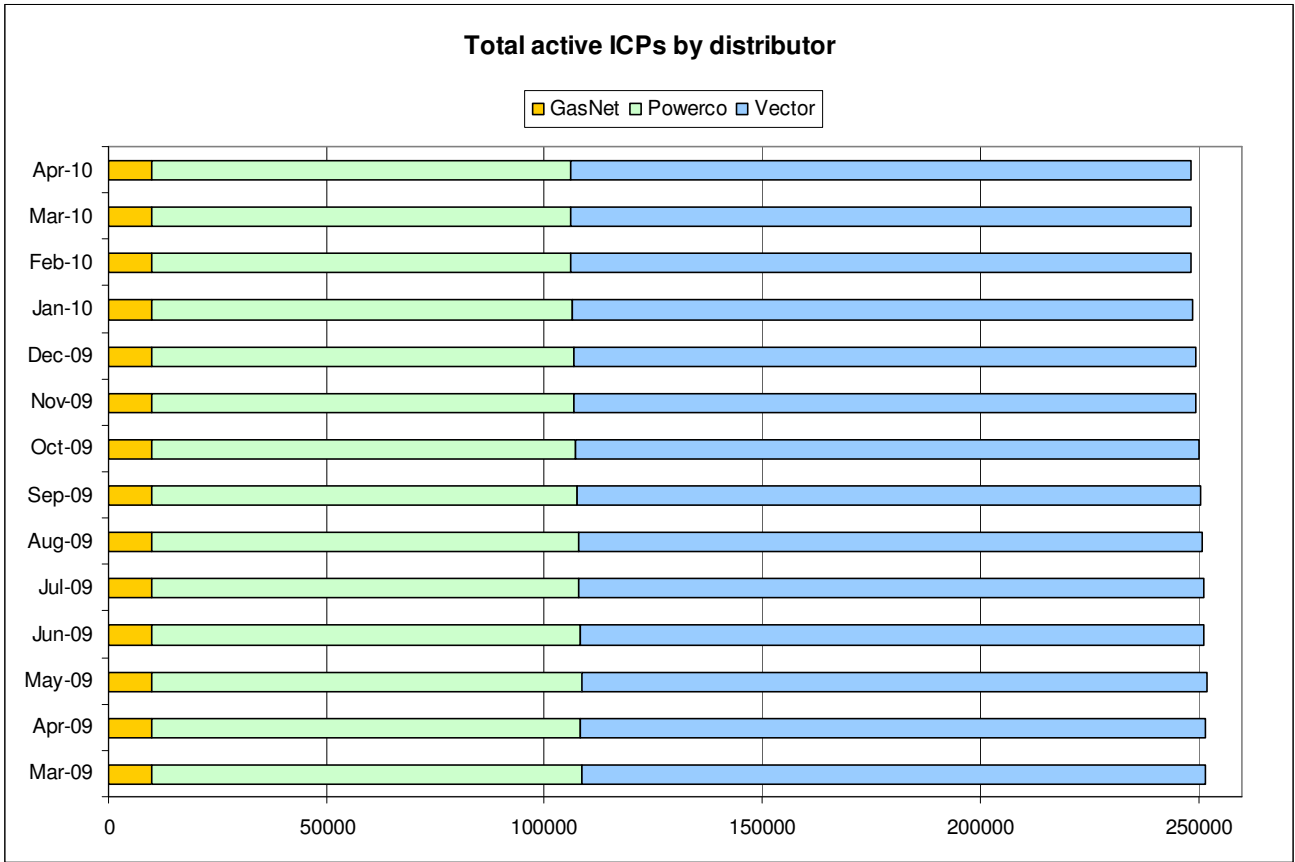
The following charts show the distribution of active-contracted ICPs by retailer, distribution company and meter owner respectively.





Market shares – historical





Active ICPs by gas gate and responsible retailer – April 2010

The following table shows the distribution of active ICPs by gas gate, and the distribution by retailer at each gas gate.

The responsible retailer codes are as follows:

AGCL—Auckland Gas Company

BOPE—Bay of Plenty Energy

CTCT—Contact Energy

EGAS—E-Gas 2000

EGLT—E-Gas Ltd

EDNZ—Energy Direct NZ (Wanganui Gas)

GENG—Genesis Energy

GEND—Genesis Energy

GEOL—Energy Online

GMTH—Greymouth Gas

MEEN—Mighty River Power

GNVG—Nova Gas

GNGC—OnGas (Vector)

Gas Gate	AGCL	BOPE	CTCT	EDNZ	EGAS	EGLT	GEND	GENG	GEOL	GMTH	GNGC	GNVG	MEEN	Grand Total
ALF15501											1			1
ASH34301			82	57		9		37					14	199
BAL08201			1											1
BAL09626			1											1
BEL24510			1706	15	221	427		16402	3		9	1099	1474	21356
BMC17901	151		410	2	11	47	1	255			4	27	741	1649
BRO36301											1			1
CAM17201	1		54			40		1365				1	175	1636
DAN05001			81		7	12		8			1	2		111
DRU15101	1		14		1	3		3			3	3	2	30
DRU15102	1					1		7			4	1	2	16
EGC30701			1											1
EGC30702		2	1			1		3						7
ELM12301			47	38		4		236			3	1		329
FLD03001			671	415	7	49		454			1	8	82	1687
FLH21901			2	3				1						6
FOX22101			227	12	7	8	1	17	4		1	13	20	310
GIS07810			822	231	1	146	3	2100			5	5		3313
GLB03401											1			1
HAR11801								1			4			5
HEN74101	908		7011	8	98	232	1	4267		1	19	80	7519	20144
HPS02993							1							1

Gas Gate	AGCL	BOPE	CTCT	EDNZ	EGAS	EGLT	GEND	GENG	GEOL	GMTH	GNGC	GNVG	MEEN	Grand Total
HRU16101						1	1	1				1		4
HST05210			3204	311	75	282	1	279	91		6	50		4299
HTK08301			1					14					4	19
HTL16601						8	1	94			3		2	108
HTV11301	5	3	1118		2	445	1	21238			51	114	2437	25414
HUN15301	1		1								2			4
HWA20801		22	433	332		66		1866			1	10		2730
IGW11901		11	69	119		8		335				3		545
KAP12901			2					2						4
KAW04405		133	8	1		6		116					1	265
KAW04410											1			1
KAW04411											1			1
KIG16801			4			1							1	6
KIH19101	1		37			38	1	1181			1	1	49	1309
KIN02601								3			2		1	6
KIN04310											1			1
KIW34201										1				1
KIW34202								1			1			2
KKI23701			1									1		2
KPA12401		1	4	6				53						64
KRG24101			1	2		1								4
KTK23901											1			1

Gas Gate	AGCL	BOPE	CTCT	EDNZ	EGAS	EGLT	GEND	GENG	GEOL	GMTH	GNGC	GNVG	MEEN	Grand Total
KUK22401			4			4		18						26
KUR33601											1			1
LAB20201			11	70		4		32				1	1	119
LCF20010			1											1
LNB24301			85	59		2		107			4	6	15	278
LVN24401			2162	124	44	85		249	50		5	53	121	2893
MGK05401										1				1
MMU08001	1	399	88		3	126	2	2955		2	3	14	335	3928
MNA23402			39	35	1	3		168						246
MRV16301			1											1
MRV16302			26			23		537				1	77	664
MSD01801			1											1
MSD01802											1			1
MTG17301						1		36					1	38
MTN23801			61	264		8		129			1	3		466
MTP20601								5						5
MUT19001											1			1
NGW14501			4			2		130					6	142
NPL12101		274	1197	2275	28	203	1	6511			9	41		10539
NPS00530			1											1
OAK18601								1						1
OKA13201			12	7		1		40						60

Gas Gate	AGCL	BOPE	CTCT	EDNZ	EGAS	EGLT	GEND	GENG	GEOL	GMTH	GNGC	GNVG	MEEN	Grand Total
OKS32801						1							1	2
OKU16701		7	34	51				115				1		208
OPK13001		1	29	13				123						166
OPO32001		46	3			4	1	54					1	109
ORD24701			1	1		1								3
OTA22601			46	3		21		296				2	5	373
OTB00301			1											1
OTO14101			3			14		155						172
PAH23201					1	1		6						8
PAP06603	6		18		1		1	8					42	76
PAP06610	378		4363	9	63	170	1	496		1	51	74	3401	9007
PAU20101			472	50	7	183		2304			2	2	94	3114
PGH15901			1											1
PGU13101								15						15
PHT04901			47			10		29			1			87
PIR31101								39					5	44
PLN24201	1		5545	2423	41	287		4002	6		21	1570	635	14531
PPA33201								8					1	9
PTA20901		2	19	27		2		138			1	1		190
PTR32601		1	9			21		288			1		12	332
PUK04201	10		66	1	5	9		14				7	55	167
RAG33401												1		1

Gas Gate	AGCL	BOPE	CTCT	EDNZ	EGAS	EGLT	GEND	GENG	GEOL	GMTH	GNGC	GNVG	MEEN	Grand Total
RAM15201			1								2			3
ROT08101		255	258	1	2	186	1	2596			11	36	433	3779
RPR30801			2			1		19					1	23
STR10201		8	98	104		24		651				3		888
TAC31001											1			1
TAT16401										1				1
TAU07001		107	188	2	1	155		1338			1	2	166	1960
TCC00201			1											1
THO22701			2			2		10						14
TIR33501			1											1
TIR33502		1				12		58					6	77
TKN17001						8		157			1	1		167
TKP05101												1		1
TKR19701		4	32		1	50		882			1	1	40	1011
TKS17401			1			1	1	14		1	2			20
TPK33301		25	5			23	1	528					22	604
TRC02003			1											1
TRG07701		571	111	3		197	1	2918			5	13	254	4073
TTK30601		2						4						6
TUK06501	1		6					1			2	1	1	12
TWA35610	1		9011	57	227	577	2	8522	3		30	6903	2273	27606
WAG21501			459	6348		65		2169		1		71		9113

Gas Gate	AGCL	BOPE	CTCT	EDNZ	EGAS	EGLT	GEND	GENG	GEOL	GMTH	GNGC	GNVG	MEEN	Grand Total
WAK22801			176	13		75		1165					11	1440
WEL18301			1			2		17					2	22
WHG07501			64	2	1	100		886			5	2	92	1152
WHK32101		242	7			40		162			3		8	462
WKE19201											1			1
WRK18901			17			11		148			2		64	242
WST03610	2791		22112	20	387	683	2	4321		13	77	364	21497	52267
WTA16501			1			1		34		1		3	1	41
WTG06910			529	9	76	122	1	4376	2		4	175	505	5799
WTK33901	12		234			11	1	1224				9	730	2221
WTK33902	30		107		3	8		163				1	203	515
WTR12001		13	129	316		14		656			8	7		1143
WTT20301											1			1
WVY23601			2				1	4						7
Grand Total	4300	2130	63920	13839	1322	5389	29	102370	159	23	387	10790	43641	248299